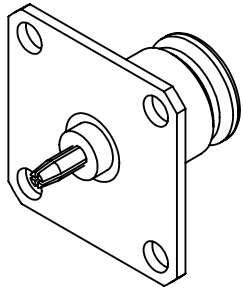


This document, including the design, configuration and mechanical features revealed herein are the sole, confidential and proprietary property of TRU Corporation. Reproduction or use thereof, in whole or part, is prohibited without the prior written consent of TRU Corporation.

REV.	DESCRIPTION	DATE	APPROVED
-	ORIGINAL ISSUE	6/17/07	WWW
A	CHANGED PER ECO-4326	03/29/13	AM



ISOMETRIC VIEW
SCALE 1:1

ENGINEERING DATA:

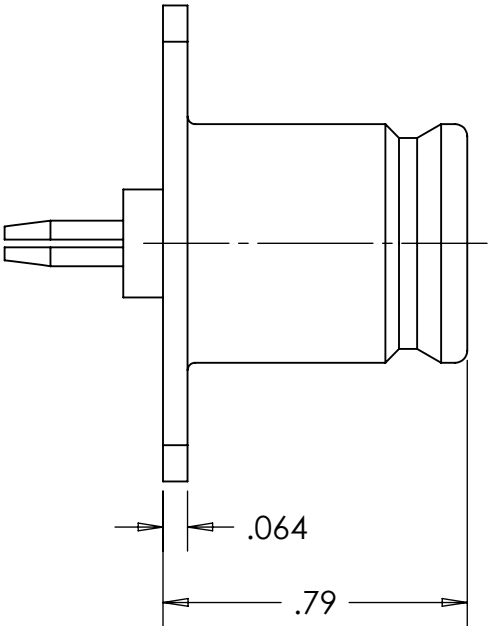
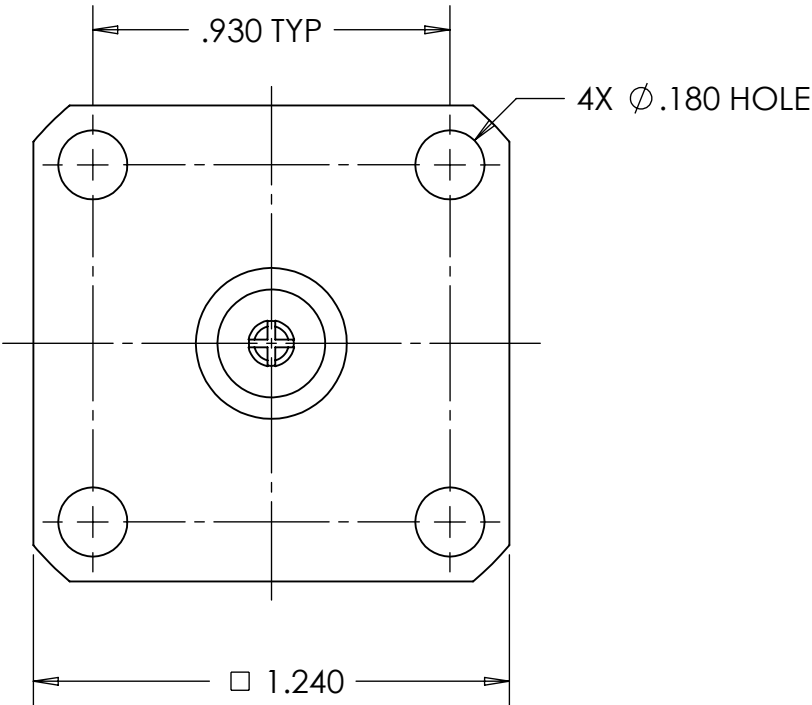
ELECTRICAL:
IMPEDANCE: 50 OHMS NOMINAL



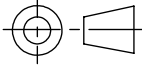
MECHANICAL:
INTERFACE: QDS(f) PER TRU SPEC
QC(m) PER TRU SPEC

MATERIAL:
INSULATOR: PTFE (TEFLON) PER ASTM-D1710, IIA
BODY: BRASS C36000, H02 PER ASTM-B16
CONTACT: BERYLLIUM COPPER C17300,
TD04 (H) PER ASTM-B196

FINISH:
CONTACT: SILVER PLATED
BODY: NICKEL PLATED

NOTES:
1. UNLESS OTHERWISE SPECIFIED; ALL
DIMENSIONS ARE REFERENCE ONLY.
2. PRODUCT COMPLIES WITH ROHS DIRECTIVE 2002/95/EC.



MATERIAL	DO NOT SCALE DRAWING		DRAWN Warren Whitten	DATE 5/22/07	<div></div> <div>TRU Corporation 245 Lynnfield St, Peabody, MA 01960</div> <div>EXPERIENCE. TRU INNOVATION.</div>			
	UNLESS OTHERWISE SPECIFIED: DIMENSIONS ARE IN INCHES		ENG APPR. AM	DATE 6/14/07				
	TOLERANCES: FRACTIONS: ± 1/64 .XX : ± .01 .XXX: ± .005 ANGLES: ± 1/2° MACHINED SURFACES: <div></div>		MFG APPR.	DATE	TITLE: CONNECTOR, COAXIAL, RF QDS(f) to QC(m) ADAPTER			
COMMENTS:	OTHER APPR.		DATE					
	THIRD ANGLE PROJECTION <div></div>		SIZE B	DWG. NO. TRU-15009		REV A		
surface area: sq inch		weight: lbs		CAGE CODE: 92180		SCALE: 2:1	SHEET 1 OF 1	