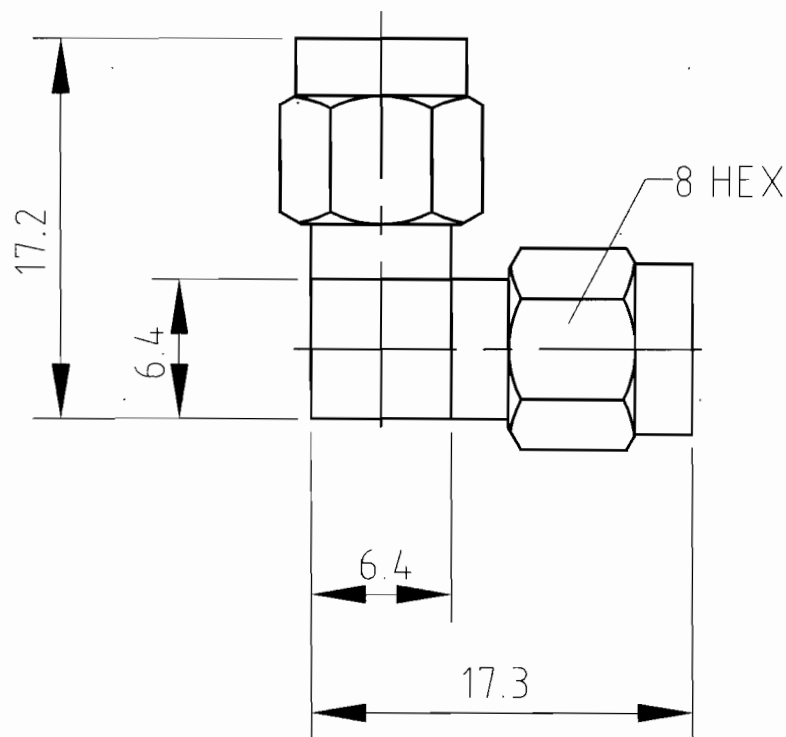


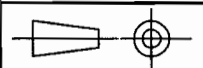
- 1.0 PERFORMANCE
- 1.1 FREQUENCY RANGE: 0-18 GHz
- 1.2 VSWR: 1.2:1 MAX
- 1.3 TEMPERATURE RANGE: -60° C TO +165° C
- 1.4 IMPEDANCE: 50 OHMS

- 2.0 MATERIALS
- 2.1 DIELECTRIC: PTFE
- 2.2 CENTER CONTACT: BRASS
- 2.3 BODY: BRASS
- 3.0 FINISHES
- 3.1 CENTER CONTACT: GOLD PLATED
- 3.2 BODY: GOLD PLATED



THIS DRAWING CONTAINS CONFIDENTIAL INFORMATION  
PROPRIETARY TO SDT INC. IT MUST NOT BE REPRODUCED OR  
DISCLOSED TO OTHERS OR USED IN ANY OTHER WAY IN WHOLE  
OR PART EXCEPT AS AUTHORIZED IN WRITING BY SDT  
INCORPORATED.

UNLESS OTHERWISE SPECIFIED:  
ALL DIMENSIONS ARE IN INCHES.  
ALL DIMENSIONS ARE AFTER PLATING.  
XXX=0.005 ALL MACHINED SURFACES MAX.



THIRD ANGLE PROJECTION

DWN	LQW	06/03/23
CHKD		
APPR		

Shanghai SDT Inc.

No.4 Lane 1175 Tongpu Rd., Shanghai, China, 200333

Fax: 021-52701318; Tel: 52701316; Email: sdpshe@sh163.net

TITLE  
RIGHT ANGLE ADAPTER SMA PLUG TO PLUG

MATERIAL:

FINISH:

DO NOT SCALE  
DRAWING

DWG NO.

SDT21552-0

REV.  
0