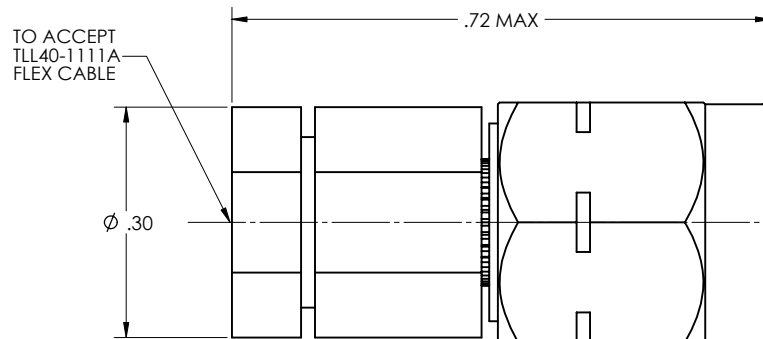
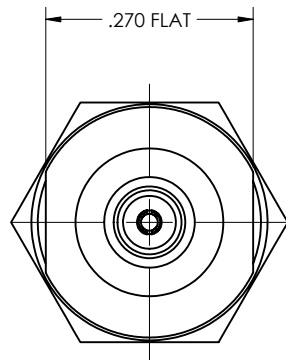
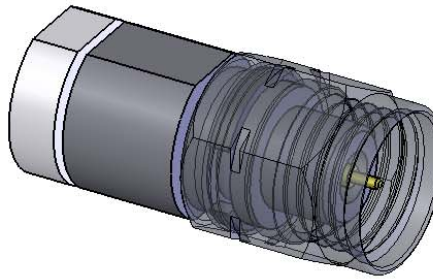
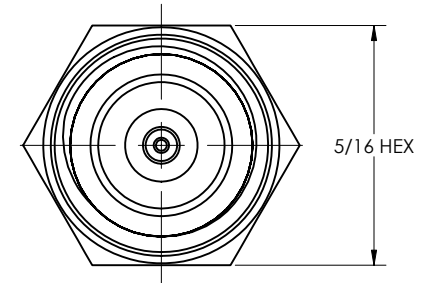


REVISIONS			
REV	DESCRIPTION	DATE	BY
-	-	-	-



2.4mm
MALE
INTERFACE



MATERIAL:	ELECTRICAL:	MECHANICAL:	ENVIRONMENTAL:
BODY, NUT, RETAINING BOLT: 303 SST PER ASTM A-582 CENTER CONDUCTOR, SOLDER SLEEVE, RETAINING RING: BeCu ALLOY PER ASTM B-196 INSULATOR: TEFLON PER ASTM D1710 EPOXY: SIGMA VF TYPE HV.	Impedance: 50 Ohms Nom. Freq. Range: DC TO 40 GHz VSWR: 1.05 + .005 X f (GHz) Insertion Loss: .03 x \sqrt{f} GHz Working Voltage: 165 Vrms @ Sea Level Dielectric Withstand Voltage: 500 Vrms RF HiPot Voltage: 250 Vrms Min @ 5MHz Corona Level: 125 Vrms @ 70,000 ft Insulation Resistance: 5000 Mohms Contact Resistance: Center Conductor: 2.0 Milliohms	Connector Durability: 500 Cycles Mating Torque: 8-10 lb.in	Temp. Range: -65°C to +165°C Thermal Shock: MIL-STD-202, Method 107, Test Cond. B Moisture Resistance: MIL-STD-202, Method 106. Insulation resistance at least 200 MegaOhms within 5 minutes after removal from humidity Corrosion: MIL-STD-202, Method 101, Test Cond. B Vibration: MIL-STD-202, Method 204, Test Cond. D Shock: MIL-STD-202, Method 213, Test Cond. I

FINISH:			APPLICABLE TENSOLITE DOCUMENTS			TOLERANCES AND NOTES EXCEPT AS NOTED			-		
SOLDER SLEEVE, CENTER CONDUCTOR: GOLD PLATE PER ASTM B-488 OVER NICKEL PLATE PER AMS-QQ-N-290 BODY, NUT, RETAINING BOLT: PASSIVATED PER ASTM A-967 OR AMS-QQ-P-35			WORK STANDARD	PROD INSTRUC	ASSY INSTRUC	DIMENSIONS ARE IN INCHES. LINEAR .XX ± .015 FRACTION ± 1/32			MATERIAL		
			NA	NA	NA	1. MACHINE FINISH: ϕ /RMS			APPROVAL INITIALS		
						2. BREAK ALL SHARP EDGES .005 MAX.			DRAWN BY YPHAN 06.27.07		
						3. MACHINED FILLETS .005 MAX.			CHECKED BY		
						4. MACHINED SURFACES SQUARE TO RESPECTIVE AXIS WITHIN .005 INCHES PER INCH.			TEST ENGR		
						5. MACHINED DIAMETERS CONCENTRIC WITHIN .002 TIR.			QUALITY		
						6. DIMENSIONS TO BE MET BEFORE PLATING. CHAMFER ALL THREADS 45°.			DESIGN ENGR		
						7. THREADS PER 1-26			MFG. ENGR T.EN 10.11.07		
						8. REMOVE FRAYED EDGES ON TEFLON.			SCALE 8:1		
						9. REMOVE ALL BURRS.			CAGE CODE 30990		
									DRAWING NO. 5068-4CCSF		
									SHEET 1 OF 1		
									REV. -		

NOTICE
THIS DRAWING EMBODIES A CONFIDENTIAL PROPRIETARY DESIGN
ORIGINATED BY TENSOLITE COMPANY AND ALL DESIGN, MANUFACTURING,
REPRODUCTION, USE AND SALE RIGHTS REGARDING THE SAME ARE
EXPRESSLY RESERVED. IT IS SUBMITTED UNDER A CONFIDENTIAL
RELATIONSHIP FOR A SPECIFIED PURPOSE, AND THE RECIPIENT AGREES
BY ACCEPTING THIS DRAWING NOT TO DISSEMINATE OR DISCLOSE ANY
INFORMATION REGARDING IT TO ANY UNAUTHORIZED PERSON TO
INCORPORATE IN OTHER PROJECTS ANY SPECIAL FEATURES PECULIAR
TO THIS DESIGN. ALL PATENT RIGHTS HERETO ARE EXPRESSLY
RESERVED BY TENSOLITE COMPANY, LONG BEACH, CALIFORNIA 90815.

Tensolite
2400 Grand Avenue
Long Beach, California 90815-1762

**HIGH PERFORMANCE CABLES
& INTERCONNECT SYSTEMS**

**2.4mm MALE
FOR TLL40-1111A**

SIZE: 8:1
CAGE CODE: 30990
DRAWING NO.: 5068-4CCSF
SHEET 1 OF 1
REV. -