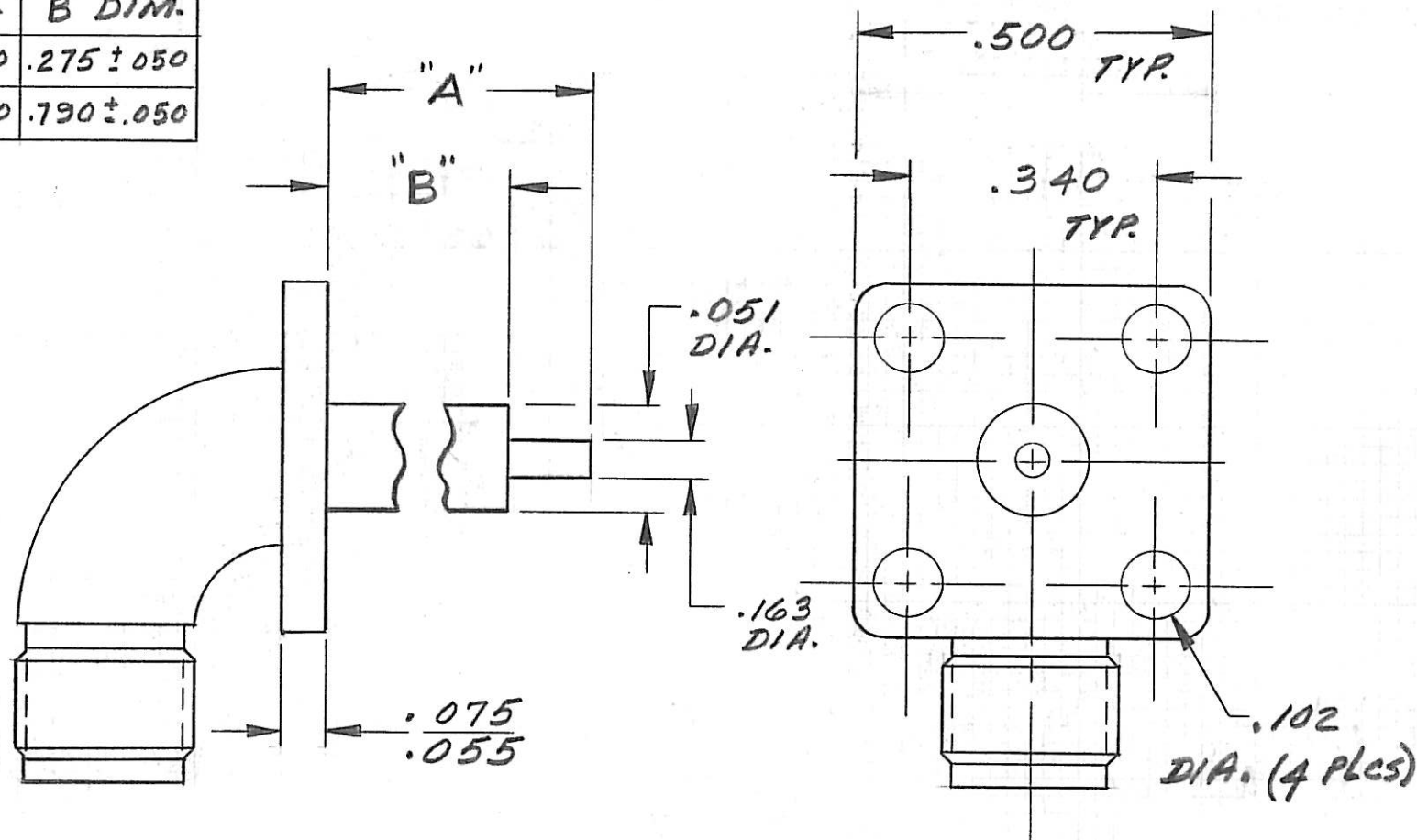


PART NO.	"A" DIM.	"B" DIM.
5449-1	.400 ± .050	.275 ± .050
5449-2	.900 ± .050	.790 ± .050



3. FSC NO. 30990

2. ADD SUFFIX "SF" TO PART NO. FOR STAINLESS FINISH

1. ADD SUFFIX "CC" TO PART NO. FOR CAPTIVATED CONTACT

NOTICE

This drawing embodies a CONFIDENTIAL proprietary design originated by Connecting Devices, Inc., and all design, manufacturing, reproduction, use and sale rights regarding the same are expressly reserved. It is submitted under a confidential relationship for a specified purpose, and the recipient agrees by accepting this drawing not to supply or disclose any information regarding it to any unauthorized person, or to incorporate in other projects any special feature peculiar to this design. All patent rights hereto are expressly reserved by Connecting Devices, Inc., El Segundo, Calif.

TOLERANCES AND NOTES EXCEPT AS NOTED

DIMENSIONS ARE IN INCHES

LINEAR .XX ± .020
.XXX ± .010 ANGULAR ± 1/2°

FRACTION ± 1/32

1. MACHINE FINISH $\sqrt{63}$ RMS

2. BREAK ALL SHARP EDGES .005-.010

3. ALL MACHINED FILLETS R.

4. ALL MACHINED SURFACES SQUARE TO RESPECTIVE AXIS WITHIN .005 PER INCH.

5. MACHINED DIAMETERS TO BE CONCENTRIC WITHIN .002-.005 T.I.R.

6. DIMENSIONS TO BE MET BEFORE PLATING.

7. CHAMFER ALL THDS. 45°

8. THREADS PER H-28.

9. REMOVE FRAYED EDGES ON TEFLON.

10. REMOVE ALL BURRS.

WEIGHT

SCALE

4:1

STAINLESS
STL.

MIL.C-39012

MATERIAL

SIZE

SPECIFICATION

PROCUREMENT

FINISH

HEAT TREAT

NOTED

CONNECTING DEVICES Inc.

EL SEGUNDO, CALIF. 90245

SMA FEMALE/FLANGE
MOUNT TERMINAL

APPR.

ENG.

CHK.

DR.

CDI
5449

N.C.