

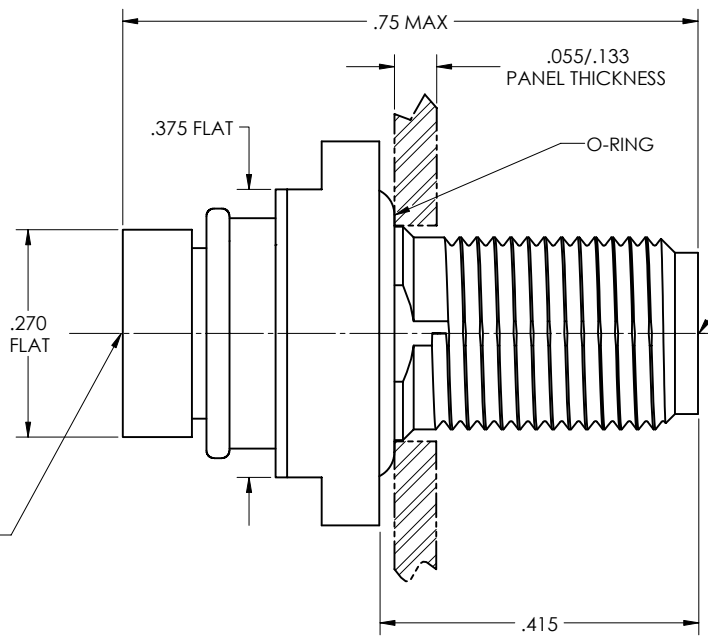
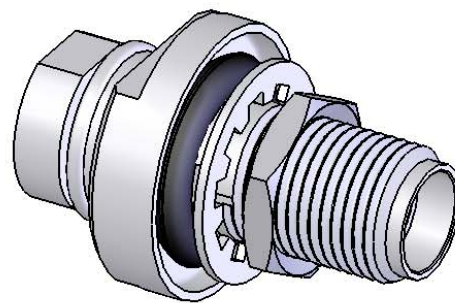
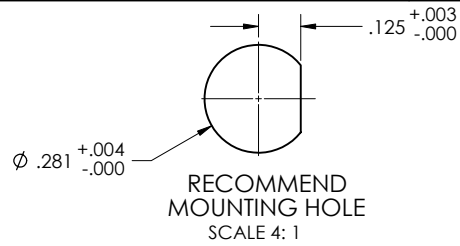
4

3

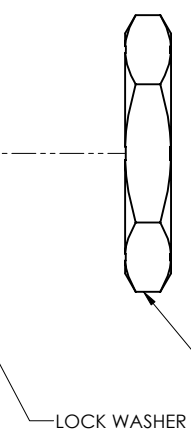
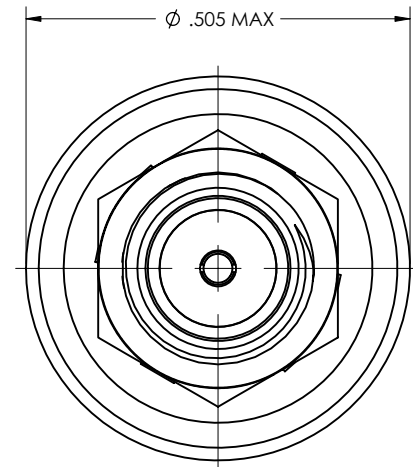
2

1

REVISIONS			
REV	DESCRIPTION	DATE	BY
-	-	-	-



HIGH PERFORMANCE SMA FEMALE



5/16 HEX NUT

LOCK WASHER

PRELIMINARY

MATERIAL:	ELECTRICAL:	MECHANICAL:	ENVIRONMENTAL:
BODY, RETAINING BOLT, LOCK NUT: 303 SST PER ASTM A-582 CENTER CONDUCTOR, SOLDER SLEEVE: BeCu ALLOY PER ASTM B-196 INSULATOR: TEFLON PER ASTM D-1710 O-RING: SILICONE RUBBER LOCK WASHER: 410 SST	Impedance: 50 Ohms Nom. Freq. Range: DC TO 26 GHz VSWR: 1.25 Max Insertion Loss: .20 db Working Voltage: 500 Vrms @ Sea Level Dielectric Withstand Voltage: 1500 Vrms RF HiPot Voltage: 1000 Vrms Min @ 5MHz Corona Level: 375 Vrms @ 70,000 ft Insulation Resistance: 5000 Mohms Contact Resistance: Center Conductor: 2.0 Milliohms	Force To Engage & Disengage: Torque: 2 inch-pounds max Longitudinal Force: NA Connector Durability: 500 cycles min @ 12 cycles/minute max Center Contact Retention: 6 lbs min. axial Permeability: Less than 2.0 mU	Temp. Range: -65°C to +165°C Thermal Shock: MIL-STD-202, Method 107, Test Cond. B Moisture Resistance: MIL-STD-202, Method 106. Insulation resistance at least 200 MegaOhms within 5 minutes after removal from humidity Corrosion: MIL-STD-202, Method 101, Test Cond. B Vibration: MIL-STD-202, Method 204, Test Cond. D Shock: MIL-STD-202, Method 213, Test Cond. I

FINISH:
SOLDER SLEEVE, CENTER CONDUCTOR: GOLD PLATE PER ASTM B-488 OVER NICKEL PLATE PER AMS-QQ-N-290 BODY, RETAINING BOLT, HEX NUT, LOCK WASHER: PASSIVATED PER ASTM A-967 OR AMS-QQ-P-35

APPLICABLE TENSOLITE DOCUMENTS		
WORK STANDARD	PROD INSTRUC	ASSY INSTRUC
NA	NA	NA

NOTICE

THIS DRAWING EMBODIES A CONFIDENTIAL PROPRIETARY DESIGN ORIGINATED BY TENSOLITE COMPANY AND ALL DESIGN, MANUFACTURING, REPRODUCTION, USE AND SALE RIGHTS REGARDING THE SAME ARE EXPRESSLY RESERVED. IT IS SUBMITTED UNDER A CONFIDENTIAL RELATIONSHIP FOR A SPECIFIED PURPOSE AND THE RECIPIENT AGREES BY ACCEPTING THIS DRAWING NOT TO SUPPLY OR DISCLOSE ANY INFORMATION REGARDING IT TO ANY UNAUTHORIZED PERSON TO INCORPORATE IN OTHER PRODUCTS ANY SPECIAL FEATURES SPECIFIC TO THIS DESIGN. ALL PATENT RIGHTS HERETO ARE EXPRESSLY RESERVED BY TENSOLITE COMPANY, LONG BEACH, CALIFORNIA 90815.

TOLERANCES AND NOTES EXCEPT AS NOTED	
DIMENSIONS ARE IN INCHES.	
LINEAR .XX ±.015	
FRACTION 1/32	
ANGULAR ± 1/2°	
1.	MACHINE FINISH @ RMS
2.	BREAK ALL SHARP EDGES .005 MAX.
3.	MACHINED FILLETS .005 MAX.
4.	MACHINED SURFACES SQUARE TO RESPECTIVE AXIS WITHIN .005 INCHES PER INCH.
5.	MACHINED DIAMETERS CONCENTRIC WITHIN .002 TIR.
6.	DIMENSIONS TO BE MET BEFORE PLATING.
7.	CHAMFER ALL THREADS 45°.
8.	THREADS PER 1129.
9.	REMOVE FRAYED EDGES ON TEFLON.
10.	REMOVE ALL BURRS.

MATERIAL		SIZE	SPECIFICATION	PROCUREMENT
APPROVAL INITIALS	DATE			
DRAWN BY YPHAN	10.25.07			
CHECKED BY				
TEST ENGR				
QUALITY				
DESIGN ENGR T.EN	11.01.07			
MEG. ENGR				
SIZE C	CAGE CODE 30990	DRAWING NO. 5754-2CCSF	SHEET 1 OF 1	

Tensolite HIGH PERFORMANCE CABLES & INTERCONNECT SYSTEMS
 2400 Grand Avenue Long Beach, California 90815-1762

TITLE
 HIGH PERFORMANCE SMA FEMALE BULKHEAD FEED THROUGH FOR TLL40-1078A FLEX CABLE

SCALE
 8:1 OL/

4

3

2

1