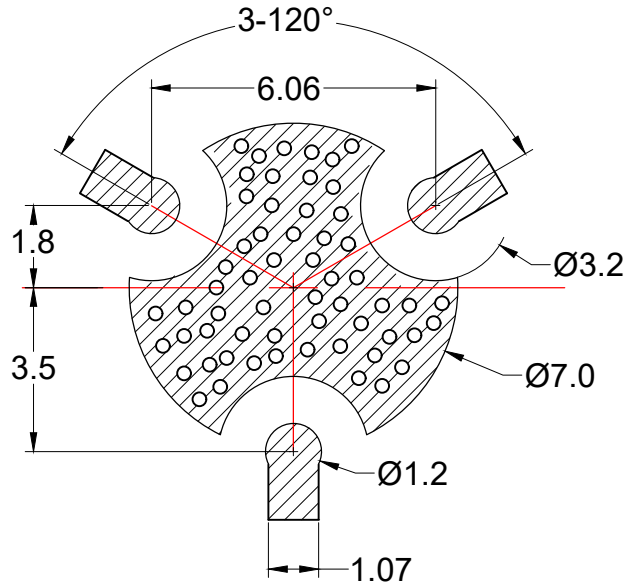
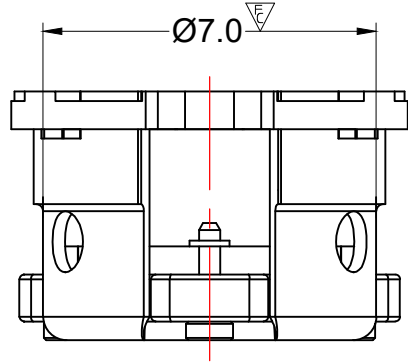
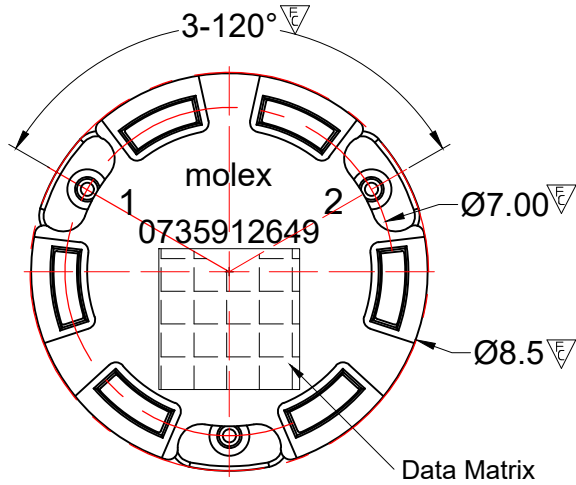


RECOMMENDED LAND PATTERN :
Zone A must be attached to heat sink. Thermal conductivity of intermediate layers between Zone A and heat sink must be better than 0.1 W / [°C x mm].

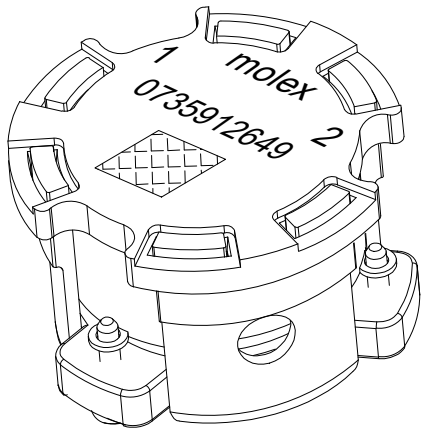
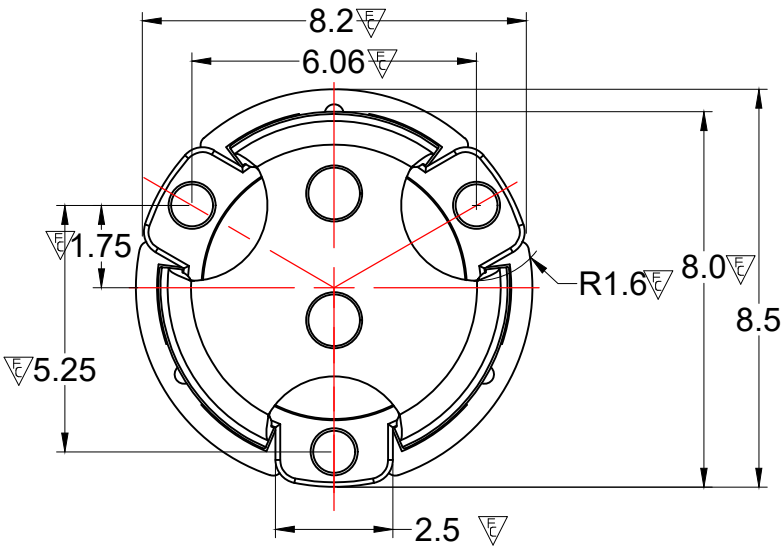
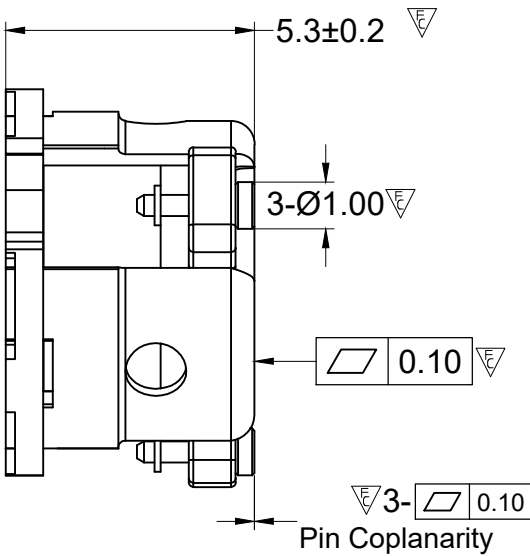


PCB Material :RO4350B/20mil;
Pad size(Port1,2,3): Φ=1.2mm



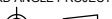
ELECTRICAL SPECIFICATIONS:

Frequency Range : 3300~3600 MHz
Input power(Within freq. range) : 20W
Input power, peak (Within freq. range) :100W
Reflected power : 20W
Insertion Loss : 0.35 dB max
Isolation : 20 dB min
Return Loss(Inband, all ports) : 20dB min
Inter modulation distortion 3:rd order:(10W x 2 tones,1MHz Spacing):-55dBc max
(5W x 2 tones,1MHz Spacing) :-60dBc max
Operating Temperature : -40°C to +110°C
Storage Temperature : -40°C to +125°C
Direction : CW



MATERIAL :
BODY : STEEL, SILVER PLATED
PIN : COPPER , SILVER PLATED
NOTES :
1. STANDARD INPUT/OUTPUT IMPEDANCE 50 OHM
2. LEAD FREE, NO ND MATERIAL, BEO FREE
3.THE DIMENSION OF DATA MATRIX IS 3*3MM INFORMATION INCLUDING WORK ORDER NUMBER-SERIAL NUMBER-MATERIAL NUMBER
4 THIS PART COMPLIES WITH ALL ROHS REQUIREMENTS

ENG PART#: 802-330-360-YS028

FUNCTIONAL SYMBOLS	THIS DRAWING CONTAINS INFORMATION THAT IS PROPRIETARY TO MOLEX ELECTRONIC TECHNOLOGIES, LLC AND SHOULD NOT BE USED WITHOUT WRITTEN PERMISSION										
	DIMENSION UNITS		SCALE		CURRENT REV DESC:			<div>molex</div>			
	MM		1:1								INITIAL RELEASE
	GENERAL TOLERANCES (UNLESS SPECIFIED)				SMSJ CIRCULATOR/3300~3600 MHZ/CW						
		mm	INCH								
	4 PLACES	±0.025	±----								
	3 PLACES	±0.05	±----								
	2 PLACES	±0.13	±----								
	1 PLACE	±0.2	±----								
	0 PLACES	±0.4	±----								
	ANGULAR TOL ± 1.5 °				STATUS:----			RESTRICTED PRODUCT CUSTOMER DRAWING			
	DRAFT WHERE APPLICABLE MUST REMAIN WITHIN DIMENSIONS										
	DIVISIONAL SYMBOLS		THIRD ANGLE PROJECTION		DRAWING	SERIES	MATERIAL NUMBER		CUSTOMER		SHEET NUMBER
					A3-SIZE	73591	0735912649		CUSTOM PART		1 OF 1