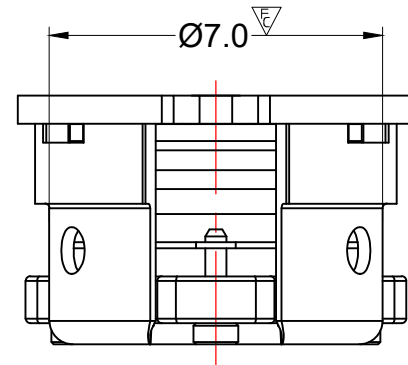
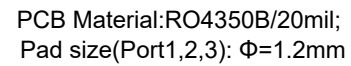
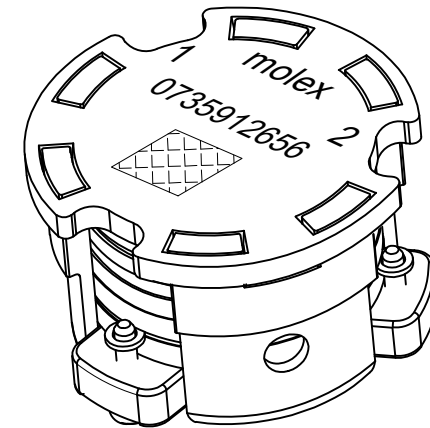
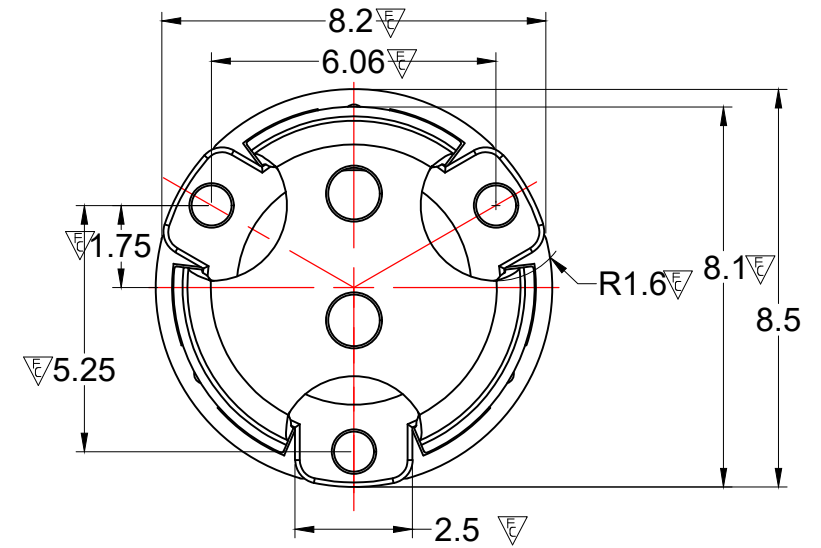


Zone A must be attached to heat sink. Thermal conductivity of intermediate layers between Zone A and heat sink must be better than $0.1 \text{ W} / [\text{°C} \times \text{mm}]$.





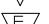
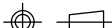
Frequency Range : 3450~3650 MHz
 Input power(Within freq. range) : 20W
 Input power, peak (Within freq. range) : 100W
 Reflected power : 20W
 Insertion Loss : 0.35 dB max
 Isolation : 20 dB min
 Return Loss(Inband, all ports) : 20 dB min
 Inter modulation distortion 3:rd order:(10W x 2 tones, 1MHz Spacing): -55dBc max
 (5W x 2 tones, 1MHz Spacing) : -60dBc max

1.STANDARD INPUT/OUTPUT IMPEDANCE 50 OHM
2.LEAD FREE, NO ND MATERIAL, BEO FREE
3.THE DIMENSION OF DATA MATRIX IS 3*3MM INFORMATION INCLUDING
WORK ORDER NUMBER-SERIAL NUMBER-MATERIAL NUMBER
4 THIS PART COMPLIES WITH ALL ROHS REQUIREMENTS



PRE-RELEASE
REFERENCE
USE ONLY

ENG PART#: 802-345-365-YS028

FUNCTIONAL SYMBOLS <div>=0</div> <div>=0</div> <div>=0</div> DIVISIONAL SYMBOLS	THIS DRAWING CONTAINS INFORMATION THAT IS PROPRIETARY TO MOLEX ELECTRONIC TECHNOLOGIES, LLC AND SHOULD NOT BE USED WITHOUT WRITTEN PERMISSION															
	DIMENSION UNITS		SCALE		CURRENT REV DESC: INITIAL RELEASE			<div>molex</div> SMSJ CIRCULATOR/3450~3650 MHZ/CW ----								
	MM		1:1													
	GENERAL TOLERANCES (UNLESS SPECIFIED)															
		mm	INCH													
	4 PLACES	±0.025	±----													
	3 PLACES	±0.05	±----		2023-08-22			RESTRICTED PRODUCT CUSTOMER DRAWING								
	2 PLACES	±0.13	±----													
	1 PLACE	±0.2	±----													
	0 PLACES	±0.4	±----													
ANGULAR TOL ± 1.5 °				STATUS:----				DOCUMENT NUMBER				DOC TYPE	DOC PART	REVISION		
DRAFT WHERE APPLICABLE MUST REMAIN WITHIN DIMENSIONS				THIRD ANGLE PROJECTION			DRAWING		SERIES		MATERIAL NUMBER		CUSTOMER		SHEET NUMBER	
							A3-SIZE		73591		0735912656		CUSTOM PART		1 OF 1	