

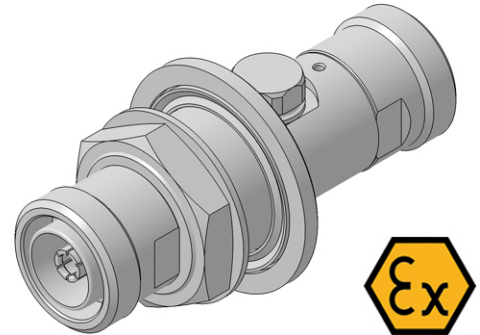
## ATEX RF SPD 9096.41.0201

### Description

ATEX RF SPD GDT technology

#### Benefits

Type of protection: "nA" and "tc"  
 For Zone 2 or Zone 22 of potentially explosive atmospheres  
 The protector can also be installed reversely  
 DC continuity for remote powering  
 Replaceable GDT 9071.99.0548, (90 V) included  
 Compliant to IEC 61643-21



### Product Configuration

Main path connectors	Port 1: <u>unprotected</u> , 7/16 jack (female) - Port 2: <u>protected</u> , 7/16 jack (female)
Mounting and grounding	MH72 (bulkhead mounting), brk (bracket)

### Technical Data

#### Electrical Data

Impedance	50 $\Omega$
Frequency range	0 - 2500 MHz
Return loss	$\geq 20$ dB
Insertion loss	$\leq 0.2$ dB
RF CW power	$\leq 6$ W
PIM 3rd order	not specified
DC supply voltage	$\leq 48$ V
DC current	$\leq 1$ A
Surge current handling capability	30 single / 20 multiple kA (test pulse 8/20 $\mu$ s)
Residual pulse energy	350 $\mu$ J typically (test pulse 4 kV 1.2/50 $\mu$ s / 2 kA 8/20 $\mu$ s) main path - protected side

#### Mechanical Data

Number of matings	500
Weight	399 g

#### Environmental Data

Operating temperature	-40 °C to +75 °C
Waterproof degree	IP67 (according to IEC 60529, data refer to the coupled state)
2011/65/EU (RoHS)	compliant

#### Material Data

Piece Parts	Material	Surface Plating
Housing	Brass	SUCOPLATE (R) Plating
Port 1 center contact	Copper Beryllium Alloy	Silver Plating
Port 2 center contact	Copper Beryllium Alloy	Silver Plating

### Related Documents

Outline drawing	DOU-00308429
Instruction	DOC-0000732903

### Remarks

ATEX/IEC Marking:  
 - II 3G Ex nA IIC T6...T5 Gc acc. EN 60079-15  
 - II 3D Ex tc IIIC T85°C...T100°C Dc acc. EN 60079-31  
 EU Declaration of Conformity (DoC): DOC-0000731654

Tamb: up to +75 °C for T6/T85°C or +80 °C for T5/T100°C

## **ATEX RF SPD** **9096.41.0201**

For RF power of various groups of equipment acc. EN 60079-0 see instruction

For remote powering voltage and current (dc/ac) see instruction

RF requirement for the transmission line connected to the device: VSWR min. 1:1.92 / return loss max. 10 dB

Cable lug for grounding included

⚠ WARNING - DO NOT CONNECT OR DISCONNECT WHEN ENERGIZED!