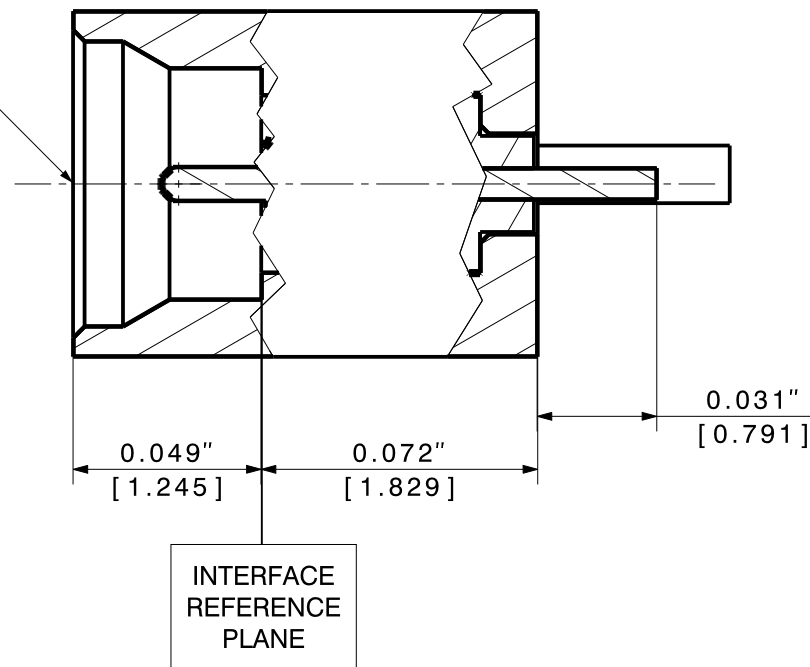
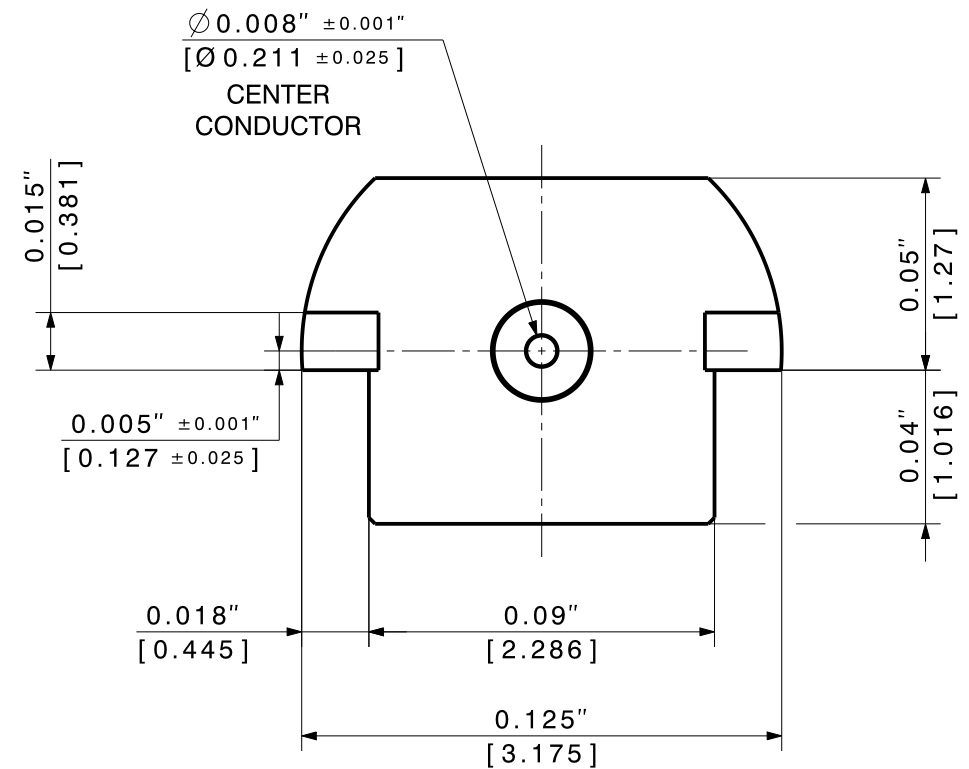
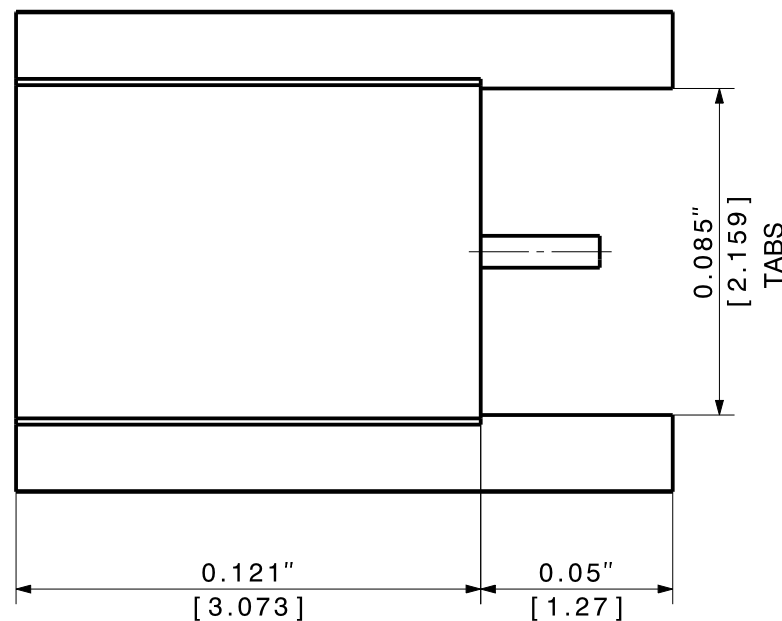
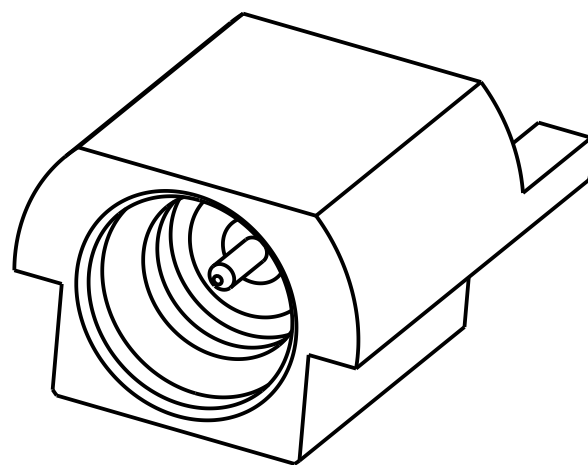


SMP3 Male
Smooth Bore



INTERFACE
REFERENCE
PLANE



Component	Material	Material Std compliance	Finish		Finish Std compliance
Body	Beryllium Copper	ASTM B-196 UNS No. C17300 Temper TD04(H)	Gold Plate Nickel underplate	50μIN - 100μIN [1.27μM - 2.54μM]	Gold per ASTM B-488, Code C, Type II, Class 1.27
				50μIN - 100μIN [1.27μM - 2.54μM]	Nickel per SAE-AMS-QQ-N-290, Class I
Insulator	PTFE	ASTM D-1710	---	---	---
Contact	Beryllium Copper	ASTM B-196 UNS No. C17300 Temper TD04(H)	Gold Plate Nickel underplate	50μIN - 100μIN [1.27μM - 2.54μM]	Gold per ASTM B-488, Code C, Type II, Class 1.27
				50μIN - 100μIN [1.27μM - 2.54μM]	Nickel per SAE-AMS-QQ-N-290, Class I

Electrical Specification:
IMPEDANCE, 50.0 Ohms NOMINAL.
FREQUENCY, 65.0 GHz.

Mechanical:
Operating temperature range: -55° C to +165° C.

- 1 Interface definition, SMP3 male is designed and manufactured IAW MIL-STD-348 and will mate with SMP3 female connector designed and manufactured IAW MIL-STD-348.
- 2 Mounting Patterns, Customer specific factors including transmission line topology, substrate thickness and material, board-stackup, operating frequency, etc. must be submitted to HUBER+SUHNER Astrolab for analysis prior to release of final performance levels and mounting configuration.

All dimensions are in Inches.
All dimensions parenthesis are in millimeters [mm].

Type: 91_SMP3-50-0-SB1		All dimensions after treatment in millimeter (mm)		
Assembly drawing	Released date: 10.11.2022	alternative ID 29174BM-4-001	3D-ID PRO-01144642 A	Sheet: 1 / 1
HUBER+SUHNER	description		ID	Release
	SMP3 Smooth Bore Edge Mount		DOU-01147487	C