

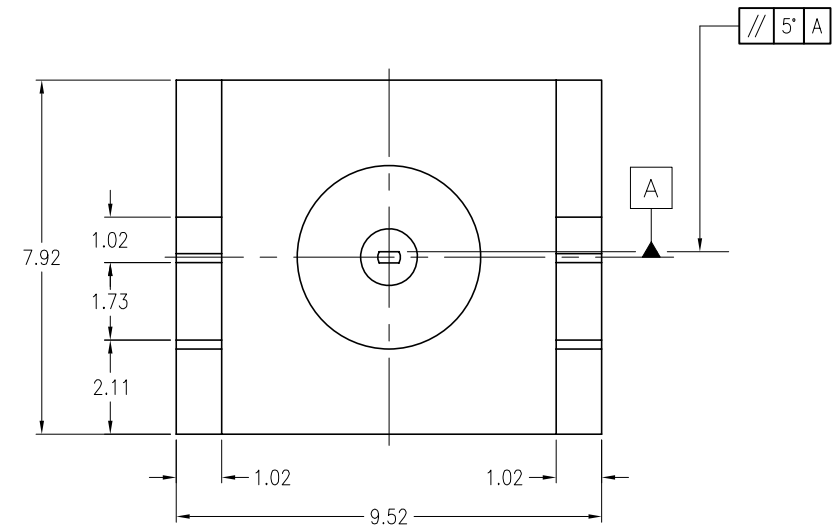
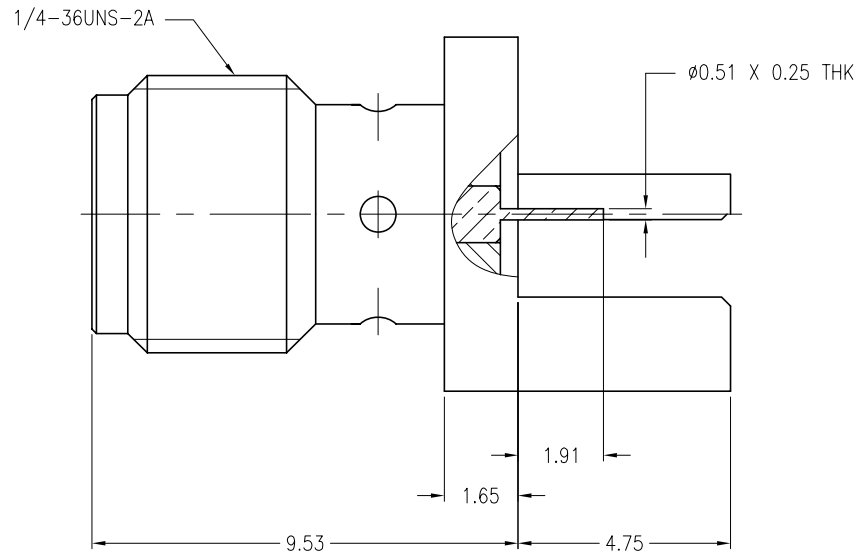
- NOTES:
- MATERIALS AND FINISHES:  
BODY - BRASS, GOLD PLATING  
CONTACT - BERYLLIUM COPPER, GOLD PLATING  
INSULATOR - PTFE, NATURAL
  - ELECTRICAL:  
A. IMPEDANCE: 50 OHM  
B. FREQUENCY RANGE: DC 0-18 GHz  
C. DIELECTRIC WITHSTANDING VOLTAGE: 1000 VRMS, MIN.
  - MECHANICAL:  
A. DURABILITY: 500 CYCLES MIN.  
B. TEMPERATURE RANGE: - 65°C to +165°C
  - BOARD THICKNESS=1.57mm

THIRD ANGLE PROJ.



REVISIONS

REV	DESCRIPTION	DATE	ECO	APPR
A	RELEASE TO MFG.	26-Aug-10		AC
B	ADD PART NO.: 901-10309/RD-DM10030801T1	11-Mar-10	--	SH



**CUSTOMER OUTLINE DRAWING**

ALL OTHER SHEETS ARE FOR INTERNAL USE ONLY

UNLESS OTHERWISE SPECIFIED, DIMENSIONS ARE IN METRIC AND TOLERANCES ARE:  
< 0.5mm ±0.05mm 0.5 - 6mm ±0.1mm 6 - 30mm ±0.2mm 30 - 120mm ± 0.3mm ANGLES ±1°

NOTICE - These drawings, specifications, or other data (1) are, and remain the property of Amphenol Corp. (2) must be returned upon request; and (3) are confidential and not to be disclosed to any person other than those to whom they are given by Amphenol Corp. The furnishing of these drawings, specifications, or other data by Amphenol Corp., or to any other person to anyone for any purpose is not to be regarded by implication or otherwise in any manner licensing, granting rights or permitting such holder or any other person to manufacture, use or sell any product, process or design, patented or otherwise, that may in any way be related to or disclosed by said drawings, specifications, or other data.

MATERIAL

REFERENCE

FINISH

DRAWN

T.DENG

ENGINEER

C.WANG

APPROVED

S.HSIEH

CAD FILE

F:\DWG\SMA\6251A1\054\50\3GT50G-BSZ

DATE

11-Mar-10

DATE

11-Mar-10

DATE

11-Mar-10

TITLE

SMA END LAUNCH  
RECEPT. JACK

SCALE: 6/1

DWG SIZE

B

SHEET 2 OF 2

CODE ID

74868

REV

B

Amphenol RF

Danbury CT USA, Tainan Taiwan, Shenzhen China  
www.amphenolrf.com

DRAWING NO.

SMA6251A1-054-3GT50G-50

ITEM NO.

116251ACJ02GA5F

PART NO.

901-10309