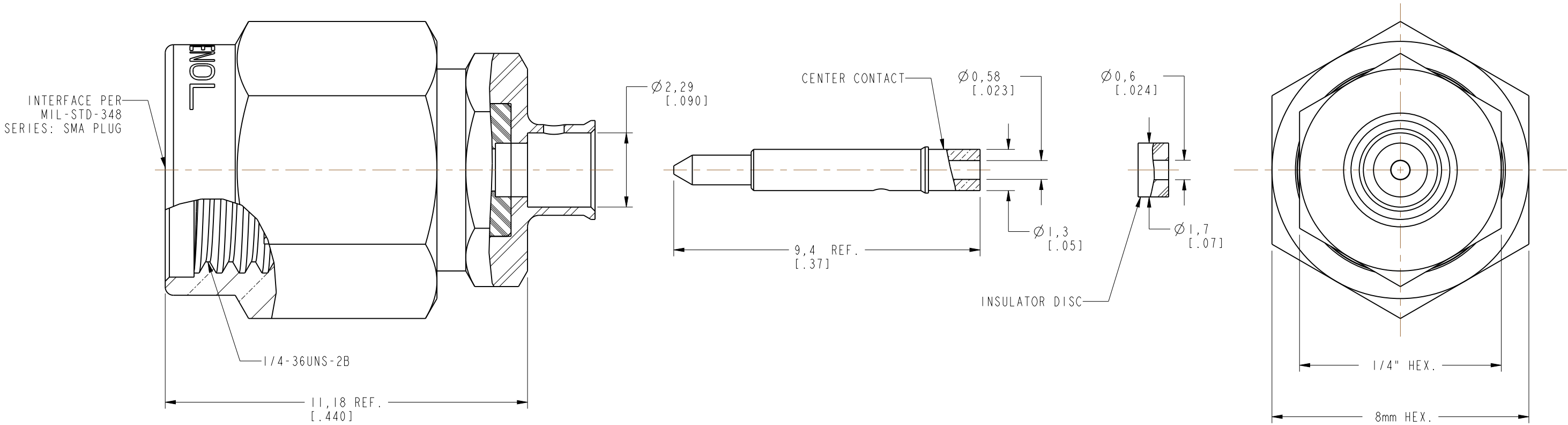
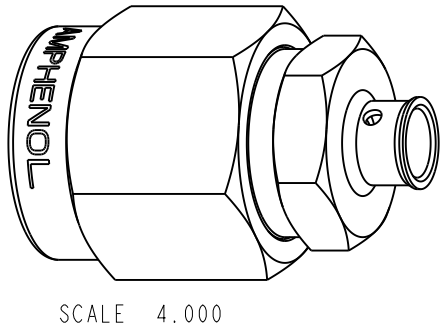
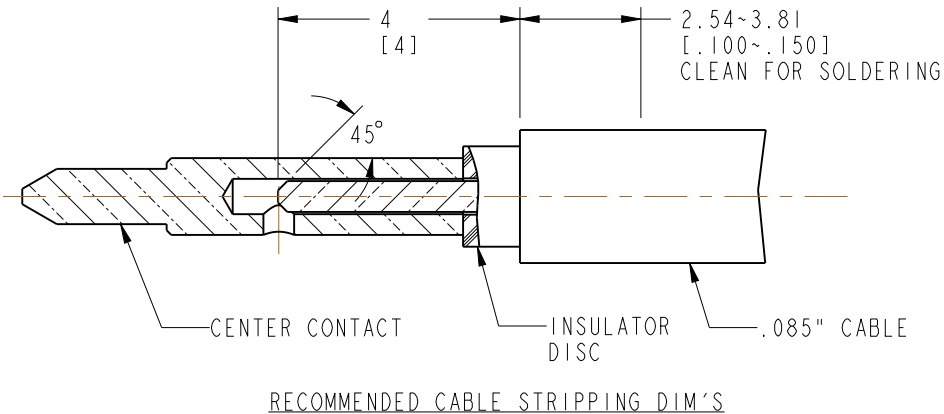


NOTES:

I. MATERIALS AND FINISHES:
BODY - STAINLESS STEEL, GOLD PLATED (.000030 MIN) OVER NICKEL (.000100 MIN).
COUPLING NUT - STAINLESS STEEL, PASSIVATED

THIRD ANGLE PROJ. 

REVISIONS				
REV	DESCRIPTION	DATE	ECO	APPR
A	RELEASE TO MFG.	07-Nov-15	50853	BCG
B	CHANGE TO SOLDER BARREL BODY	28-Jun-19	12047	CJV



CUSTOMER OUTLINE DRAWING
ALL OTHER SHEETS ARE FOR INTERNAL USE ONLY

<div>UNLESS OTHERWISE SPECIFIED, DIMENSIONS ARE IN METRIC AND TOLERANCES ARE: <0.5mm ± 0.05mm 0.5 - 6mm ± 0.1mm 6 - 30mm ± 0.2mm 30 - 120mm ± 0.3mm ANGLES ±1°</div> <div>NOTICE - These drawings, specifications, or other data (1) are, and remain the property of Amphenol corp. (2) must be returned upon request; and (3) are confidential and not to be disclosed to any person other than those to whom they are given by Amphenol Corp. the furnishing of these drawings, specifications, or other data by Amphenol Corp., or to any other person to anyone for any purpose is not to be regarded by implication or otherwise in any manner licensing, granting rights to permitting such holder or any other person to manufacture, use or sell any product, process or design, patented or otherwise, that may in any way be related to or disclosed by said drawings, specifications, or other data.</div>	MATERIAL	DRAWN M.ZHANG	DATE 14-Feb-19	TITLE SMA SOLDER PLUG, WITH ANTI-TORQUE BODY (FOR .085" CABLE)		Amphenol RF www.amphenolrf.com	
		ENGINEER S.DUAN	DATE 14-Feb-19			DRAWING NO. 901-9201-2ASF-T	
	REFERENCE EAR# 6826.1, 6826 AND 901-9201-2ASF	APPROVED K. CAPOZZI	DATE 28-Jun-19			ITEM NO. 901-9201-2ASF-T	
	CONFIGURATION LEVEL:	CAD FILE		SCALE: 8.0:1.0 SHEET 2 OF 2		PART NO. 901-9201-2ASF-T	
	FINISH			DWG SIZE B		REV B	