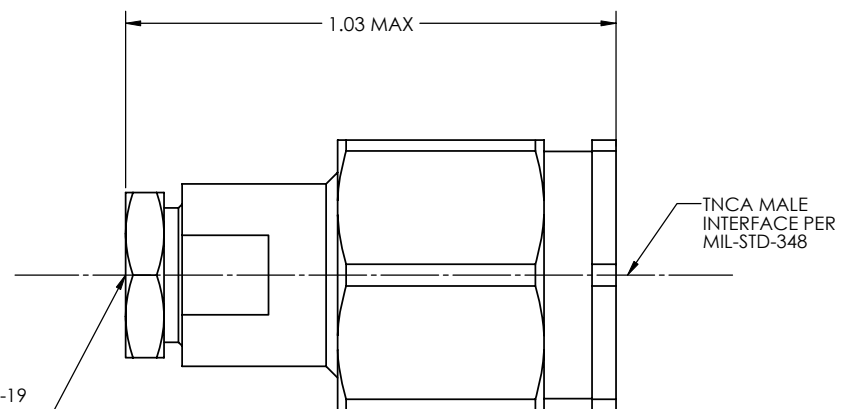
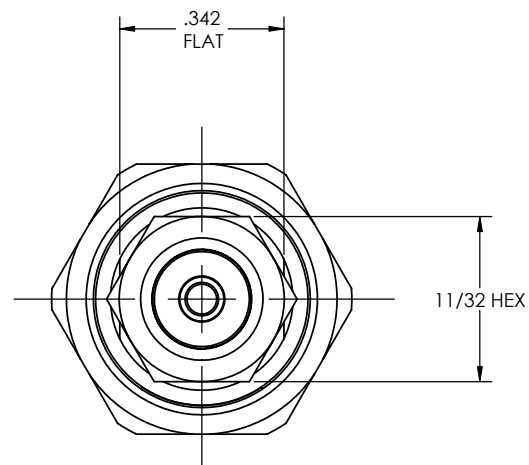
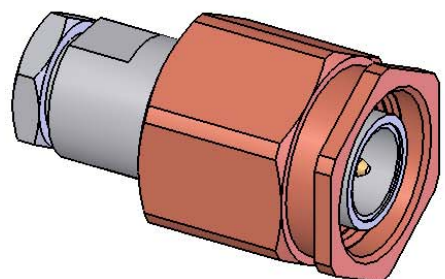


REVISIONS			
REV	DESCRIPTION	DATE	BY
-	-	-	-



MATERIAL:	ELECTRICAL:	MECHANICAL:	ENVIRONMENTAL:
BODY, NUT, RETAINING BOLT: 303 SST PER ASTM A-582 CENTER CONDUCTOR, SOLDER SLEEVE & RETAINING RING: BeCu ALLOY PER ASTM B-196 INSULATOR: TEFLON PTFE ASTM D 1710 GASKET: SILICONE RUBBER PER A-A-59588	Impedance: 50 Ohms Nom. Freq. Range: DC TO 18 GHz VSWR: TBD Insertion Loss: TBD Working Voltage: 500 Vrms @ Sea Level Dielectric Withstand Voltage: 1500 Vrms RF HiPot Voltage: 1000 Vrms Min @ 5MHz Corona Level: 375 Vrms @ 70,000 ft Insulation Resistance: 5000 Mohms Contact Resistance: Center Conductor: Before Environmental: 1.5 Milliohms Max After Environmental: 2.0 Milliohms Max Center Contact: Before Environmental: .2 Milliohms Max	Mating Characteristics: MIL-STD-348 Torque To Engage & Disengage: Torque: 2 inch-pounds max Longitudinal Force: NA Connector Durability: 500 cycles min @ 12 cycles/minute max Coupling Proof Torque: 15 inch-pounds min. Coupling Mech. Retention: 100 pounds min. Mating Torque: 12-15 inch-pounds.	Temp. Range: -65°C to +125°C Thermal Shock: MIL-STD-202, Method 107, Test Cond. B Moisture Resistance: MIL-STD-202, Method 106. Insulation resistance at least 200 MegaOhms within 5 minutes after removal from humidity Corrosion: MIL-STD-202, Method 101, Test Cond. B Vibration: MIL-STD-202, Method 204, Test Cond. D Shock: MIL-STD-202, Method 213, Test Cond. I

FINISH:			APPLICABLE CARLISLE IT DOCUMENTS			TOLERANCES AND NOTES EXCEPT AS NOTED															
CENTER CONDUCTOR; SOLDER SLEEVE GOLD PLATE PER ASTM B-488 OVER NICKEL PLATE PER AMS-QQ-N-290 BODY, NUT, RETAINING BOLT: PASSIVATED PER ASTM A-967 OR AMS-QQ-P-35			WORK STANDARD	PROD INSTRUC	ASSY INSTRUC	DIMENSIONS ARE IN INCHES XX ± .05 LINEAR .XXX ± .005 ANGULAR ± 1/2° FRACTION ± 1/32			MATERIAL		SIZE		SPECIFICATION		PROCUREMENT						
			NA	NA	TBD	1. MACHINE FINISH: $\sqrt{32}$ RMS 2. BREAK ALL SHARP EDGES .003 MAX.			APPROVAL INITIALS		DATE		CARLISLE Interconnect Technologies Long Beach, CA 90815		TITLE TNCA MALE FOR FOR TLL26-1190AS-19 FLEX CABLE						
			NOTICE THIS DRAWING EMBODIES A CONFIDENTIAL PROPRIETARY DESIGN ORIGINATED BY CARLISLE INTERCONNECT TECHNOLOGIES & ALL DESIGN, MANUFACTURING, REPRODUCTION, USE & SALE RIGHTS REGARDING THE SAME ARE EXPRESSLY RESERVED. IT IS SUBMITTED UNDER A CONFIDENTIAL RELATIONSHIP. THE RECIPIENT AGREES BY PURCHASING THIS DRAWING TO MAINTAIN IT IN CONFIDENCE AND TO NOT REPRODUCE, COPIY, OR DISCLOSE IT TO ANY UNAUTHORIZED PERSON OR TO INCORPORATE IT INTO OTHER PROJECTS. ANY SPECIAL FEATURES PECULIAR TO THIS DESIGN, ALL PATENT RIGHTS HERETO ARE EXPRESSLY RESERVED BY CARLISLE INTERCONNECT TECHNOLOGIES, LONG BEACH, CALIFORNIA 90805.			3. MACHINED FILLETS .005 MAX. 4. MACHINED SURFACES SQUARE TO RESPECTIVE AXIS WITHIN .005 INCHES PER INCH. 5. MACHINED DIAMETERS CONCENTRIC WITHIN .002 I.D. 6. DIMENSIONS TO BE MET BEFORE PLATING. 7. CHAMFER ALL THREADS 45°. 8. THREADS PER UN-28 9. REMOVE FRAYED EDGES ON TEFLON. 10. REMOVE ALL BURRS.			DRAWN BY HT		10.09.08										
									CHECKED BY												
									TEST ENGR				SCALE		SUB-DIRECTORY/FILE NAME		SHEET 1 OF 1		REV.		
									QUALITY					5:1		SW/					
									DESIGN ENGR			H.T. 10.10.08		SIZE		CAGE CODE: 30990		DRAWING NO. 9209-9SF			
									MFG. ENGR												