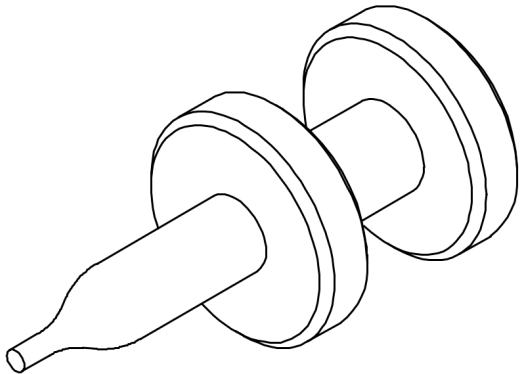
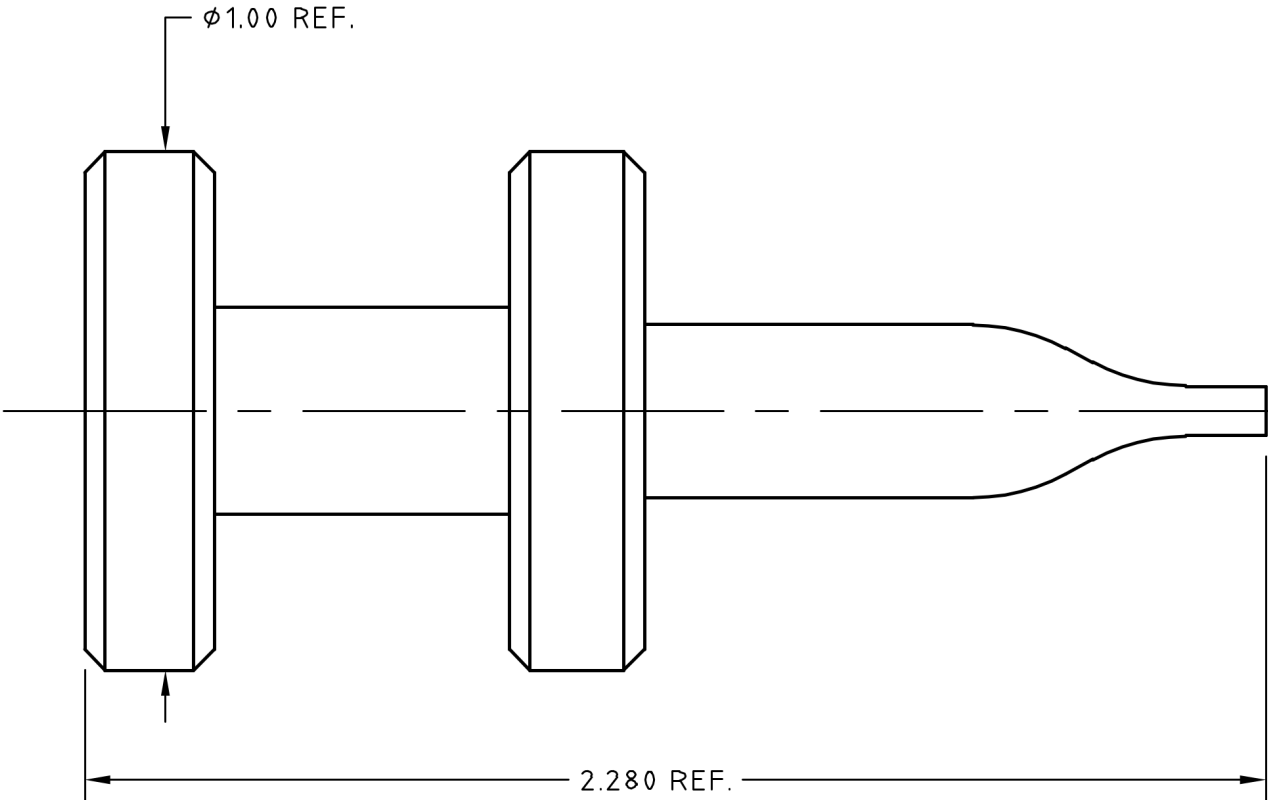


CONTROL DRAWING

AT-2377-DCM5

A

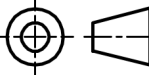



NOTES:

1. DESCRIPTION,
MOUTNING/DISMOUNTING TOOL, VITA 67.3,
SMPS FEMALE

UNLESS OTHERWISE SPECIFIED
CONCENTRICITY .004 T.I.R.
CORNERS AND FILLETS .005
MAX. RADIUS OR CHAMFER.
SURFACE FINISH 63 RMS
MICROINCHES OR BETTER.

X	±.030 [±0.762]
XX	±.015 [±0.381]
XXX	±.005 [±0.127]
XXXX	±.0005 [±0.013]
ANGLES	± 1°
DO NOT SCALE DRAWING	

NAME		DATE			 HUBER+SUHNER Astrolab <small>THIS DRAWING CONTAINS PATENTABLE AND PROPRIETARY INFORMATION. THE DESIGN CANNOT BE USED WITHOUT WRITTEN PERMISSION OF HUBER + SUHNER ASTROLAB.</small>	
PREP.	KF	05/23/22				
ELEC.			SCALE 2:1			
MECH.						
Q.C.			ANSI A			
TITLE MOUNTING/DISMOUNTING TOOL, VITA 67.3, SMPS FEMALE						
THDS. TO BE IN ACCORD WITH U.S. DEPT. OF COMM. SCREW THD. STDS. FOR FEDERAL SERVICES 1950 SUPL. TO HANDBOOK H 28.			CODE IDENT. 16301	DWG NO. AT-2377-DCM5	REV. A	SHEET 1/1



Astrolab

THIS DRAWING CONTAINS PATENTABLE AND PROPRIETARY
INFORMATION. THE DESIGN CANNOT BE USED WITHOUT
WRITTEN PERMISSION OF HUBER + SUHRNER ASTROLAB.