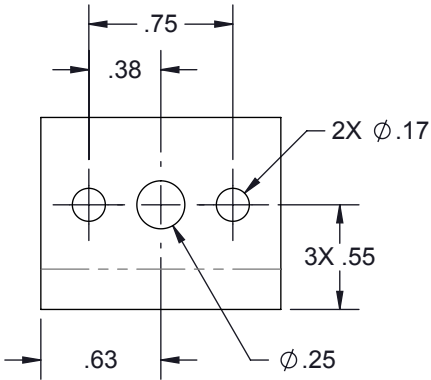
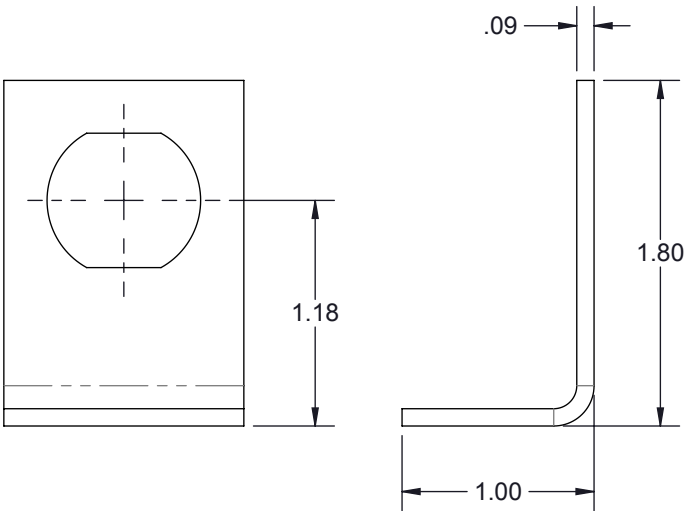
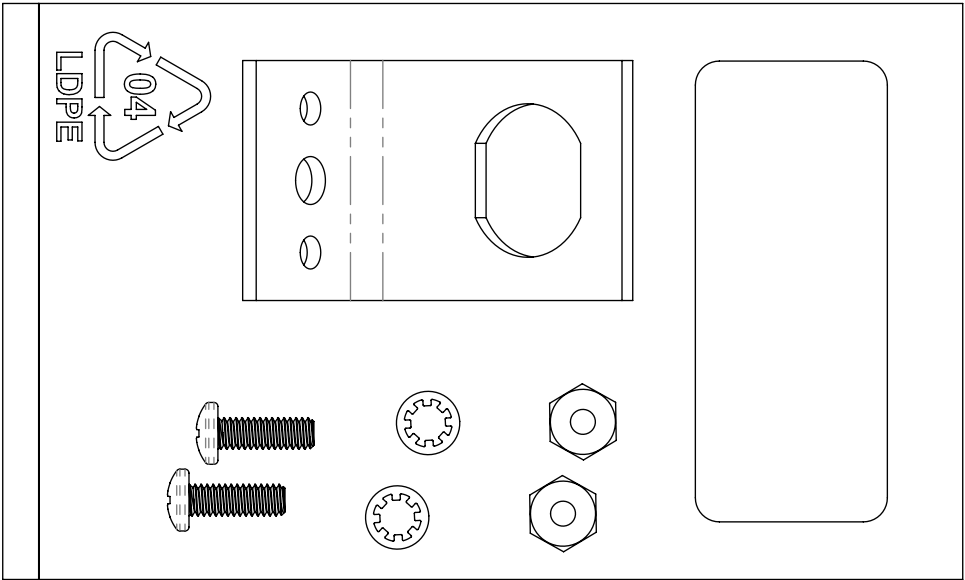


REVISIONS				
REV.	DESCRIPTION	ECN	DATE	APPROVED
A	PRODUCTION RELEASE		11/15/17	RJS



BRACKET
MOUNTING PATTERN


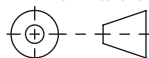


HARDWARE KIT INCLUDES:

QTY	DESCRIPTION
1	MOUNTING BRACKET 4.3-10
2	NUT 8-32 HEX 18-8 SS
2	WASHER #8 410 SS INTERNAL
2	SCREW 8-32x.50 PHIL MS PAN 18-8 SS

CUSTOMER APPROVAL: _____ DATE: _____

ALL DIMENSIONS SHOWN ARE FOR REFERENCE ONLY.

UNLESS OTHERWISE SPECIFIED LEADING DIMENSIONS ARE INCHES DIMENSIONS IN [] ARE MILLIMETERS		DRAWN HMB	DATE 11/15/2017			SHEET 1 OF 1
TOLERANCES: FRACTIONS=± 1/32 .XX=± .03 ANGLES=± 1° .XXX=± .010		ENG APPD RS	11/15/2017			SCALE 1:1
NOTICE: THE INFORMATION AND DESIGN IN THIS DOCUMENT IS THE PROPERTY OF POLYPHASER CORPORATION. ALL RIGHTS RESERVED.		PRODUCT MGR RC	11/20/2017			
THIRD-ANGLE PROJECTION 		MARKETING APPD LJ	12/6/2017			
		PROJECT NO.		TITLE KIT FLANGE/BLKH ADAPTER 4.3-10 CUSTOMER SPECIFICATION		
		DOCUMENT NAME	BF4310-C	SIZE A	CAGE 30992	PROD CAT GRP
						PART NUMBER BF4310
						REV A

THESE COMMODITIES, TECHNOLOGY OR SOFTWARE WERE EXPORTED FROM THE UNITED STATES IN ACCORDANCE WITH THE EXPORT ADMINISTRATION REGULATIONS. DIVERSION CONTRARY TO U.S. LAW PROHIBITED.