

### Features

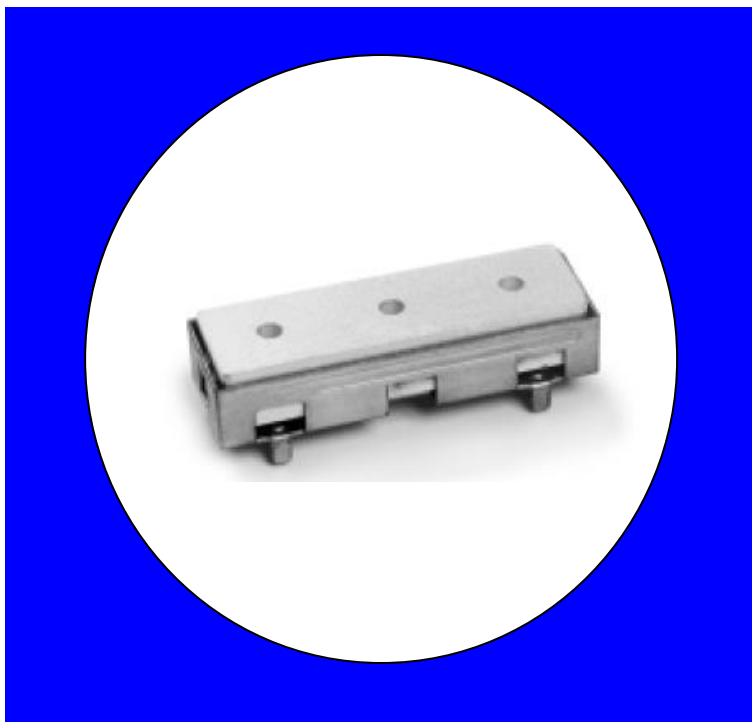
- Low Loss
- Narrow Bandwidth
- Excellent Return Loss

### Description

Pin mounted, silver (Ag) coated ceramic filter. Developed for use in TCAS applications.

Weight: 20.1 grams typical

Material: Filter is composed of a ceramic block plated with Ag and a bracket consisting of Olin 770 Copper Alloy (Cu, Zn, Ni)  
Filter complies with RoHS standards.



### Electrical Specifications

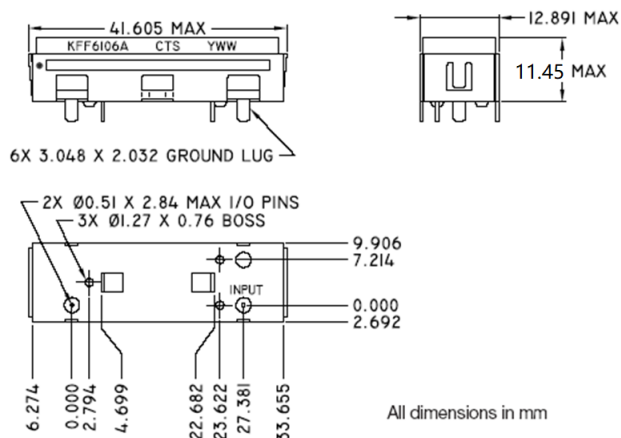
Parameter	Frequency (MHz)	Typical @ 25°C	Spec. @ 25°C	Spec. @ -40°C to +85°C
Passband Insertion Loss	975-981	0.7 dB	1.0 dB max	1.2 dB max
Passband Return Loss	975-981	18.0 dB	12.5 dB min	12.0 dB min
Attenuation	858	44.0 dB	40.0 dB min	40.0 dB min
	1087		40.0 dB min	40.0 dB min

Note: Supplier shall test each filter to the critical electrical specifications of the above table. Any subsequent audits may deviate from in value due to measurement repeatability among different test systems. Such deviations shall not exceed the following limits:

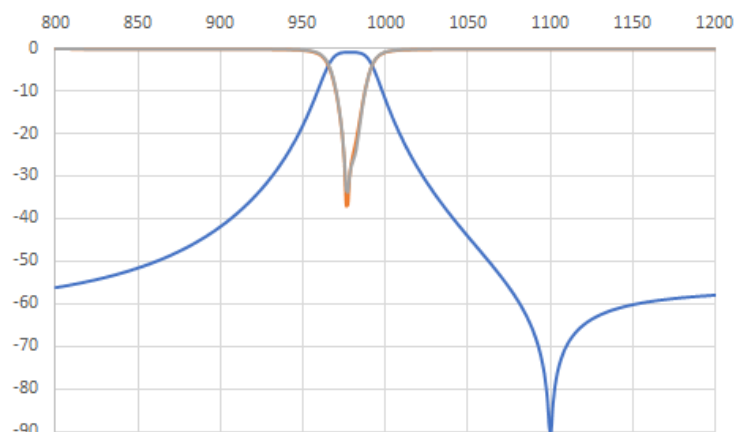
Specification Allowance	
Insertion Loss	0.1 dB
Return Loss	1.0 dB
Stopbands	1.0 dB

## Mechanical Drawing

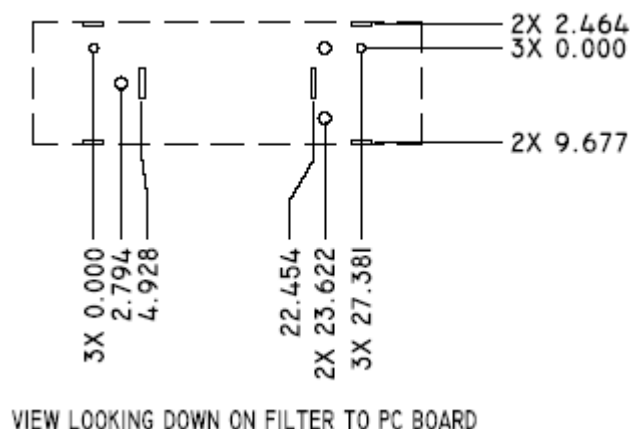
Rev 1 – Origin Date: November 4 11, 2021 – Revision Date: November 4, 2021



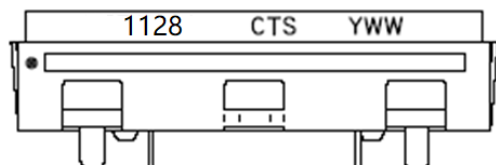
## Electrical response



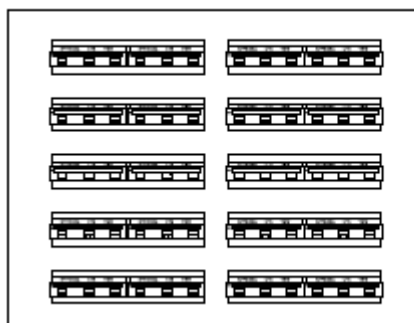
## PCB Layout



## Packaging and Marking



This product is shipped in pre-formed foam trays.



5 10 Slot foam Trays  
(100 max. per box)