

# LTE Module L860-GL



LTE, WCDMA

Cat16

M.2 30\*42

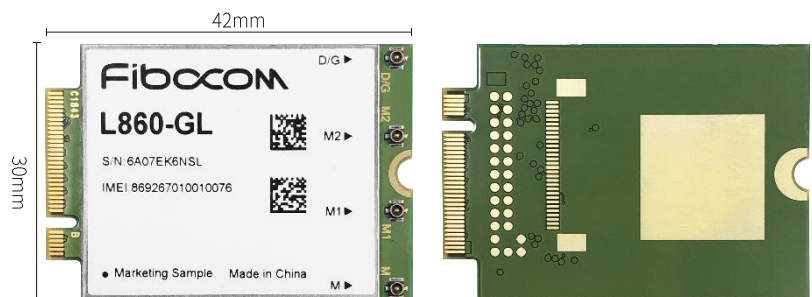
Windows, Linux

The Fibocom's L860-GL is a multimode LTE & WCDMA module that provides Gigabit LTE speed, unleashing the potential of cellular technology to meet high speed bandwidth application demand.

With a rich selection of the frequency bands, L860-GL provides global mobile network coverage to facilitate product with one SKU, reduces complexity in end product configuration .

The L860-GL supports LTE network with up to 1Gbps on the downlink and 75Mbps on the uplink. It also provides fallback to WCDMA network.

The L860-GL is designed with the M.2 30\*42 form factor which is ideally suited for integration with Personal Computer (Laptop, Desktop, Tablet, etc.), IoT Gateway and Routers that run Windows and Linux OS.



# LTE Module L860-GL



## Product Features

- LTE FDD: B1, B2, B3, B4, B5, B7, B8, B12, B13, B14, B17, B18, B19, B20, B21, B25, B26, B28, B29, B30, B32, B66
- LTE TDD: B38, B39, B40, B41, B42\*
- WCDMA: B1, B2, B4, B5, B8
- DL 5CA on 4 bands, DL 256QAM support
- DL-MIMO: 2\*2, 4\*2, 4\*4
- DL 4x4 MIMO: B1, B2, B3, B4, B7, B30, B40, B41\*, B66
- LAA (Band 46)
- Integrated GPS, GLONASS, Galileo, BDS
- Body SAR
- Antenna Tuner
- eSIM Support
- DSSA (Dual SIM Single Active)
- Maximum Transmitting Power:  
LTE: 23dBm  
WCDMA: 23.5dBm
- Receiver Sensitivity:  
LTE: -98dBm ~ -103.5dBm  
WCDMA: -110dBm ~ -111.4dBm
- Operating Voltage: 3.135V ~ 4.4V, Typical 3.3V
- Normal operating temperature: -10°C ~ +55°C
- Extended operating temperature: -20°C ~ +65°C
- Storage Temperature: -40°C ~ +85°C
- Form Factor: M.2 S3 Key-B
- Size: 30\*42\*2.3 mm

## Data

Downlink:

- LTE: 1Gbps (Cat16)
- UMTS: 384Kbps
- DC-HSPA+: 42Mbps (Cat24)

Uplink:

- LTE: 75Mbps (Cat5)
- UMTS: 384Kbps
- DC-HSPA+: 5.76Mbps (Cat6)

## Interface

- 2\*USIM
- PCIe Gen.2

## Operating System

- Windows 10 & Linux

## Approval

- Carriers: AT&T, Verizon, Sprint, DTAG, Vodafone, Telefonica, Swisscom, DoCoMo, KDDI, Softbank, Telstra, Optus
- Regulatory:  
IC(Canada), FCC(North America), CE(Europe), NCC(Taiwan), NAL & CCC & SRRC(China), GCF(Global), PTCRB(North America), JATE & TELEC(Japan), ANATEL(Brazil), ENACOM(Argentina), ACMA(Australia), MCIT(Azerbaijan), DWLF&M(Bahrain), TU(Barbados), MOCI(Belarus), ATT(Bolivia), Bocra(Botswana), AITI(Brunei), MPTC(Cambodia), ART(Cameroon), CRC(Colombia), NTRA(Egypt), TAF(Fiji), ARCEP(Gabon), NCA(Ghana), CONATEL(Honduras), POSTEL (SDPPI)(Indonesia), CMC(Iraq), ARTCI(Ivory Coast), SMA(Jamaica), TRC(Jordan), CA(KENYA), KC(Korea), CITRA(Kuwait), MPTC(Laos), MOT(Lebanon), SIRIM(Malaysia), ICTA(Mauritius), IFETEL(Mexico), ANRCETI(Moldova), ANRT(Morocco), INCM(Mozambique), NTA(Nepal), Curacao(Netherlands Antilles), NCC(Nigeria), TRA(Oman), PTA(Pakistan), CONATEL(Paraguay), MTC(Peru), NTC(Philippines), ictQATAR(Qatar), EAC(Russia), CITC(Saudi Arabia), ARTP(SENEGAL), RATEL(Serbia), IMDA(Singapore), ICASA(South Africa), KC(South Korea), TRCSL(Sri Lanka), SCCOM(Swaziland), TCRA(TANZANIA), NBTC(Thailand), TATT(Trinidad and Tobago), MINCOM(Tunisia), UkrSEPRO(Ukraine), TRA(U.A.E), URSEC(Uruguay), TASHKENT(Uzbekistan), CONATEL(Venezuela), MIC(Vietnam), POTRAZ(ZIMBABWE)
- Others: RoHS, Reach, HF, CB, UL

Note: \* = Planning / In progress

Copyright©FibocomWirelessInc. | Subject to changes in technology, design and availability | E-mail: [market@fibocom.com](mailto:market@fibocom.com) | Tel: +86 755-2673 3555