

# Micro Tracker

# maestro



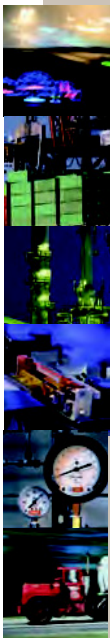
empowering wireless

## MicroTracker: Better accuracy and faster TTFF

The Maestro Wireless Solutions MicroTracker combines GSM/GPRS and GPS technologies in an industrial, compact grade design. Its exceptionally small footprint featuring embedded antennas and a single port connector make it easy to fit into places where space is limited in vehicles. The Maestro MicroTracker provides key features for fleet management applications including reporting of position, speed, mileage and ignition of the vehicle. Empowered by the latest Maestro GPS SiRFstarIV A2100-A modules, the MicroTracker also provides intelligent device management features and functionality, including firmware and software upgrades and vehicle diagnostics. It's well defined parser make it easy to integrate into your back-end application server.

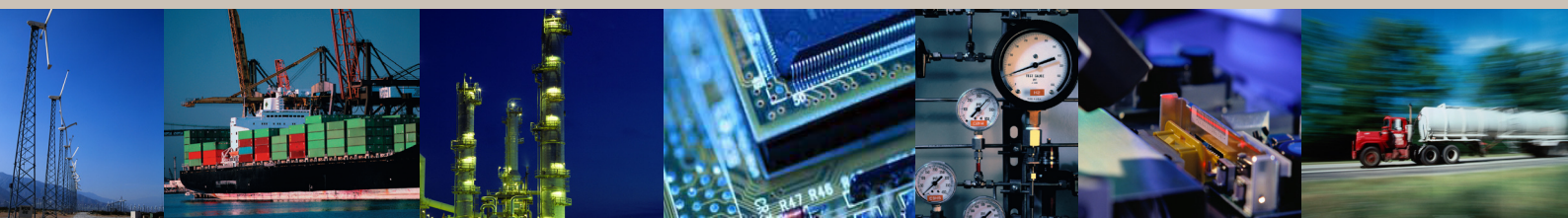
### Key Features :

- Light, compact, industrial grade design
- Easy to conceal
- Embedded GSM and GPS antenna
- Single 10-pin connector
- Cutting edge Maestro GPS SiRFstar IV GPS technology
- A-GPS and Extended Ephemeris
- GPRS & GPS LED status indicator
- Optional external battery back-up
- Intelligent device management over the air



### Faster Time to Market

To help its customers to quickly build the link from the tracking unit to their application server, Maestro Wireless Solutions provides an embedded application featuring tracking, monitoring and geofencing capabilities. Accelerating the testing and solution integration phases, the Maestro Wireless embedded application with the MicroTracker ensures quick time-to-market of the complete tracking solution.





GENERAL FEATURES
- Model: MT-01 (rev.2)
- Temperature range:
- Functional: -30°C to +80°C
- Storage: -40°C to +85°C
- Casing: PC/ABS material UL94V-0 flammability
- Shock and Vibration : SAE J1211
- Dimensions: 58.6 x 60 x 13mm
- Weight: 45g

ELECTRICAL CHARACTERISTICS
- Supply voltage range: 6-32V DC
- Current consumption during idle: 35mA - Typical at 12V DC
- Current consumption during transmission: 78mA - Typical at 12V DC
- Current consumption during power saving: 20mA - Typical at 12V DC

GSM / GPRS
- Wireless Microprocessor - WMP100 - approved module by AT&T; PTCRB Certified & FCC Certified - Sierra Wireless
- Frequency band: 850 / 900 / 1800 / 1900 MHz
- Built-in antenna
- SIM card interface 1.8/3.0V
- SIM card holder: Flip type; SIM card is accessible under the lid

GPS
- GPS engine : SiRFstar IV - Maestro A-2100-A
- Positioning Accuracy : 2.5 m CEP - 2.0 m CEP SBAS
- A-GPS: Embedded Extended Ephemeris and Ephemeris Push support
- High sensitivity: -163dBm Tracking and -160dBm Navigation
- TTFF typically <1s when hot and <35s from cold (outdoors)

COMMUNICATION WITH BACK-END
- Embedded software for faster time to market Or Customizable OpenAT application
- GSM / GPRS (TCP or UDP) or SMS communication channels

STATUS INDICATORS
- One red color LED indicating GPS position fix
- One green color LED indicating GSM registration

ELECTRICAL INTERFACE
- 10-pin connector
<b>Connection for :</b>
- Power supply
- Open collector output (able to drive external LED/relay 250mA) x2
- Digital input x2 : active between 6v to 32V DC
- Analog input x1
<b>Connecting cable :</b>
- 10 pin plug
- Wire harness
- 2A fuse on power
- Relay socket (for starter connection)

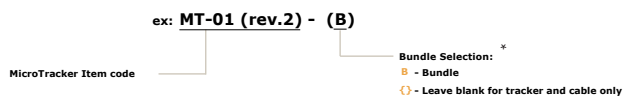
FUNCTION AND FEATURE
- Immediate reporting of vehicle status (position, speed, mileage, ignition)
- Disable/Enable ignition - engine
- Configurable alert messages for overspeed, geofence, ignition, etc.
- Software/Firmware upgrade over the air
- Optional 540 mAh battery back-up Operating Range : Charge: 0° to 45° C Discharge: -20° to 60° C
- m2mgateway.net compatible for demo and quick implementation
- Optional MEMS support - accelerometer - consult us

SERVICE PORT
- Accessible from outside after removing a plastic lid
- Serial port at logic 2.8V TTL level + other electrical test point
- Using external RS232 transceiver for connection to a PC, for diagnostic & software upgrade

COMPLIANCE
- FCC Part 15B, 22H & 24E
- PTCRB
- CE, e-mark
- A-tick
- RoHS

ACCESSORIES
- OBD2 wire harness
- Plastic blister for protection and mounting

### Ordering Information



\* Bundle include: MT-01 (rev.2), battery back-up and complete cabling with relay

Maestro Wireless Solutions Ltd  
3603-9, 36/F  
118 Connaught Road West  
Hong Kong  
Tel: (852) 2869 0688  
Fax: (852) 2525 4701  
contact@maestro-wireless.com  
www.maestro-wireless.com

