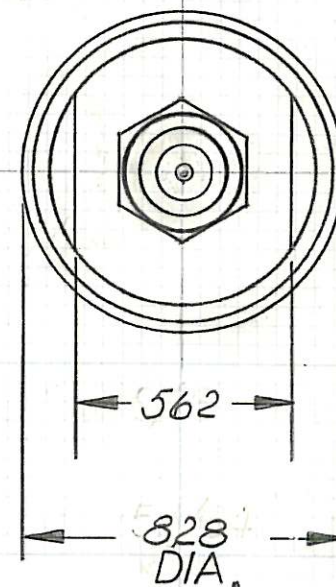
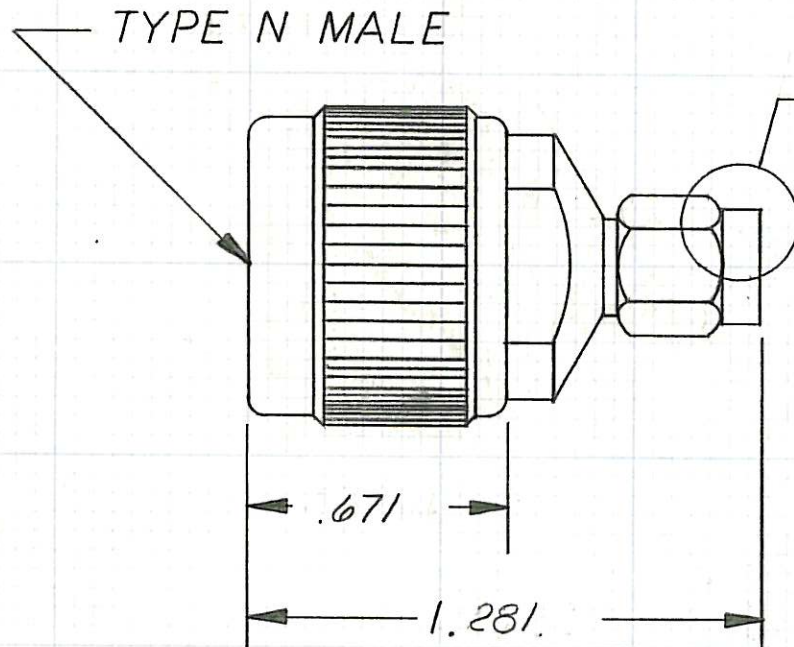


This drawing embodies a CONFIDENTIAL proprietary design originated by Connecting Devices, Inc., and all design, manufacturing, reproduction, use and sale rights regarding the same are expressly reserved. It is submitted under a confidential relationship for a specified purpose, and the recipient agrees by accepting this drawing not to supply or disclose any information regarding it to any unauthorized person, or to incorporate in other projects any special feature peculiar to this design. All patent rights hereto are expressly reserved by Connecting Devices, Inc., El Segundo, Calif.

SMA MALE



(1) CENTER CONDUCTOR IS CAPTIVATED

FSC NO. 30990

LET.	NO.	MAT'L	DIM.	TOLERANCES AND NOTES EXCEPT AS NOTED DIMENSIONS ARE IN INCHES LINEAR .XX ± .015 ANGULAR ± 1/2° FRACTION ± 1/32 1. MACHINE FINISH 63 RMS 2. BREAK ALL SHARP EDGES .005-.010 3. ALL MACHINED FILLETS R. 4. ALL MACHINED SURFACES SQUARE TO RESPECTIVE AXIS WITHIN .005 PER INCH. 5. MACHINED DIAMETERS TO BE CONCENTRIC WITHIN .002-.005 T.I.R. 6. DIMENSIONS TO BE MET BEFORE PLATING. 7. CHAMFER ALL THDS. 45° 8. THREADS PER H-28. 9. REMOVE FRAYED EDGES ON TEFLON. 10. REMOVE ALL BURRS.		STAINLESS STEEL		SPECIFICATION		PROCUREMENT	
						MATERIAL		SIZE		SPECIFICATION	
						FINISH		HEAT TREAT		F	
						PASSIVATED				APPR.	
						CONNECTING DEVICES Inc.				ENG.	
										CHK.	
										DR.	
NEXT ASSY.						TYPE N MALE TO SMA MALE ADAPTER				CDI 5006 CCLSF F	
WEIGHT		SCALE									
31.4 G.		2/1									