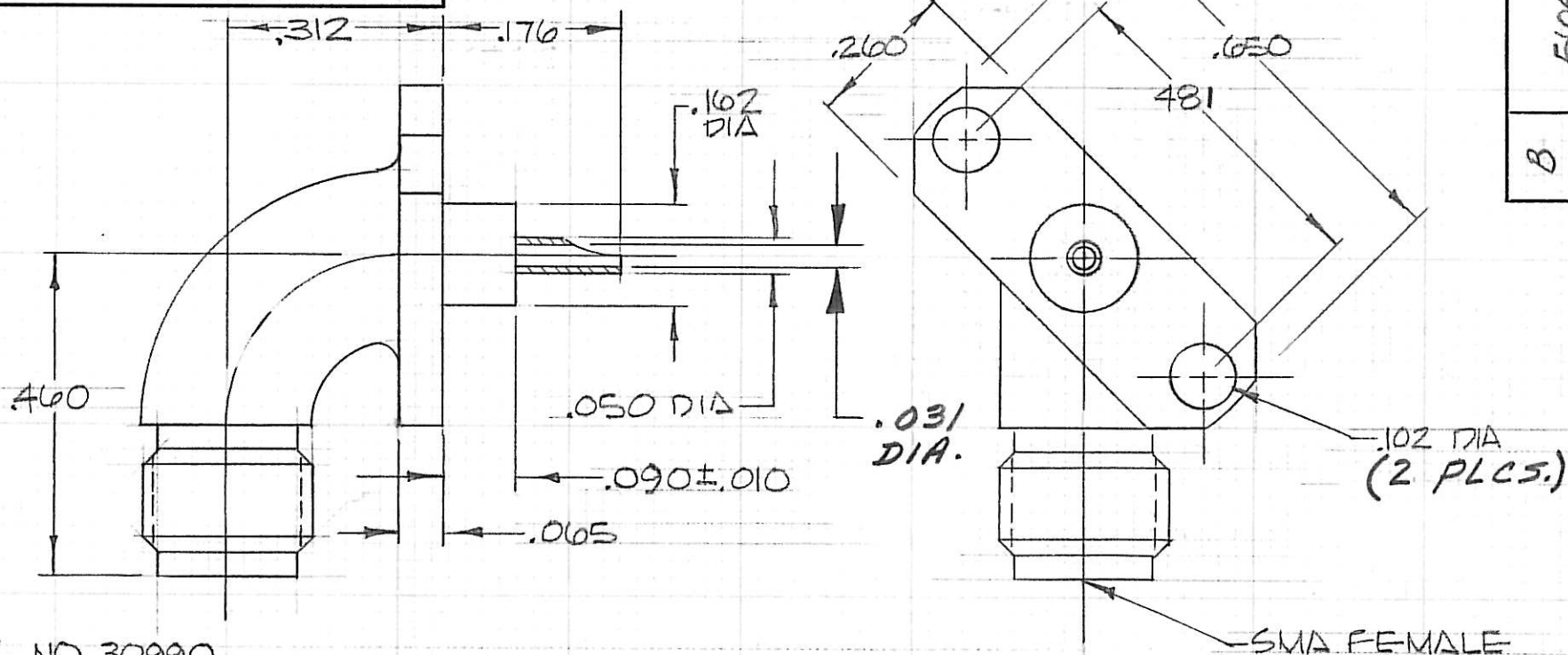


NOTICE

This drawing embodies a CONFIDENTIAL proprietary design originated by Connecting Devices, Inc., and all design, manufacturing, reproduction, use and sale rights regarding the same are expressly reserved. It is submitted under a confidential relationship for a specified purpose, and the recipient agrees by accepting this drawing not to supply or disclose any information regarding it to any unauthorized person, or to incorporate in other projects any special feature peculiar to this design. All patent rights hereto are expressly reserved by Connecting Devices, Inc., El Segundo, Calif.



5043 CC

B LET. CHG.

- (2) FSL NO 30990
- (1) ADD SUFFIX SF TO P/N FOR STAINLESS FINISH

LET.	NO.	MAT'L	DIM.	TOLERANCES AND NOTES EXCEPT AS NOTED			
				DIMENSIONS ARE IN INCHES			
				LINEAR .XX ± .015			
				.XXX ± .005			
				FRACTION ± 1/32			
				1. MACHINE FINISH 63 RMS			
				2. BREAK ALL SHARP EDGES .005-.010			
				3. ALL MACHINED FILLETS R.			
				4. ALL MACHINED SURFACES SQUARE TO RESPECTIVE AXIS WITHIN .005 PER INCH.			
				5. MACHINED DIAMETERS TO BE CONCENTRIC WITHIN .002-.005 T.I.R.			
				6. DIMENSIONS TO BE MET BEFORE PLATING.			
				7. CHAMFER ALL THDS. 45°			
				8. THREADS PER H-28.			
				9. REMOVE FRAYED EDGES ON TEFLON.			
				10. REMOVE ALL BURRS.			
NEXT ASSY.				STAINLESS STEEL			
WEIGHT				MIL-C-30012			
SCALE				MATERIAL SIZE SPECIFICATION PROCUREMENT			
4/1				FINISH HEAT TREAT B			
				GOLD			
				CONNECTING DEVICES Inc.			
				SMA FE R/A 1/2 HOLE FLANGE			
				CDI 5043 CC B			