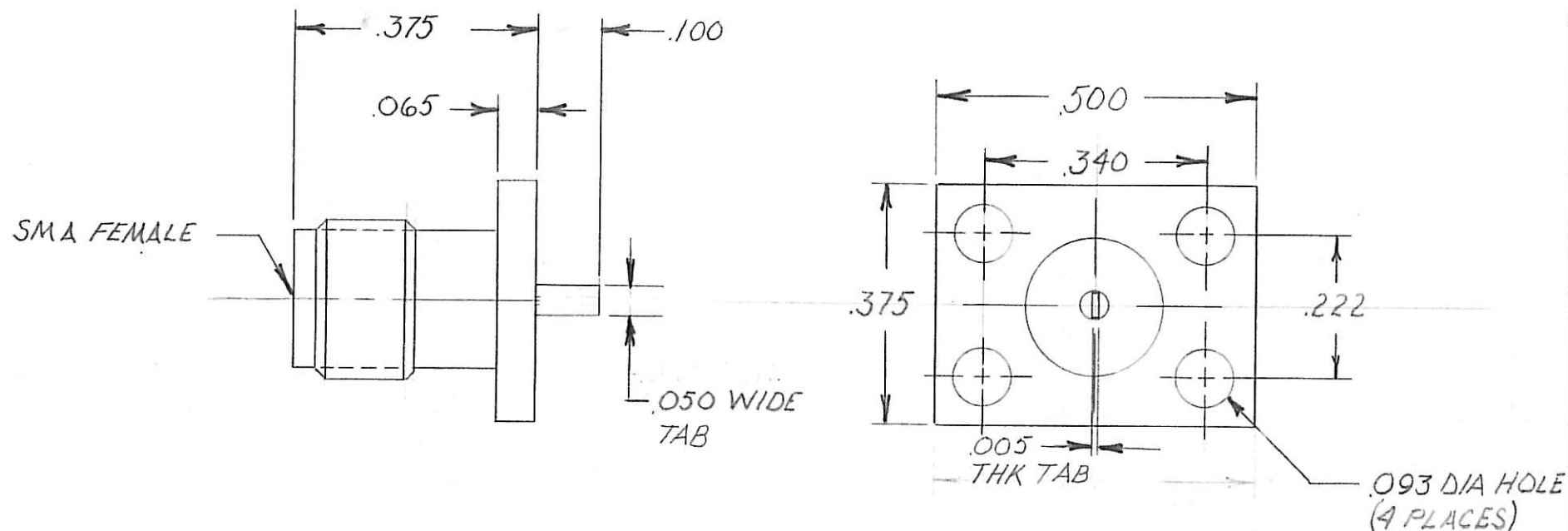


PART NUMBER	TAB POSITION
5694	VERTICAL



ADD SUFFIX CC TO P/N FOR CAPTIVATED CONTACT
ADD SUFFIX SF TO P/N FOR STAINLESS FINISH

NOTICE

This drawing embodies a CONFIDENTIAL proprietary design originated by Connecting Devices, Inc., and all design, manufacturing, reproduction, use and sale rights regarding the same are expressly reserved. It is submitted under a confidential relationship for a specified purpose, and the recipient agrees by accepting this drawing not to supply or disclose any information regarding it to any unauthorized person, or to incorporate in other projects any special feature peculiar to this design. All patent rights hereto are expressly reserved by Connecting Devices, Inc., El Segundo, Calif.

WEIGHT

SCALE

4:1

TOLERANCES AND NOTES EXCEPT AS NOTED

DIMENSIONS ARE IN INCHES

LINEAR .XX $\pm .020$ ANGULAR $\pm 1/2^\circ$

LINEAR .XXX $\pm .010$

FRACTION $\pm 1/32$

1. MACHINE FINISH $\sqrt{63}$ RMS

2. BREAK ALL SHARP EDGES .005-.010

3. ALL MACHINED FILLETS R.

4. ALL MACHINED SURFACES SQUARE TO RESPECTIVE AXIS WITHIN .005 PER INCH.

5. MACHINED DIAMETERS TO BE CONCENTRIC WITHIN .002-.005 T.I.R.

6. DIMENSIONS TO BE MET BEFORE PLATING.

7. CHAMFER ALL THDS. 45°

8. THREADS PER H-28.

9. REMOVE FRAYED EDGES ON TEFLON.

10. REMOVE ALL BURRS.

STAINLESS
STL.

MIL C 39012

MATERIAL

SIZE

SPECIFICATION

PROCUREMENT

FINISH

HEAT TREAT

GOLD

APPR.

ENG.

CHK.

DR.

CONNECTING DEVICES Inc.

EL SEGUNDO, CALIF. 90245

RECTANGULAR FLANGE MOUNT
FEMALE RECEPTACLE (VERTICAL)

CDT-5694

NC