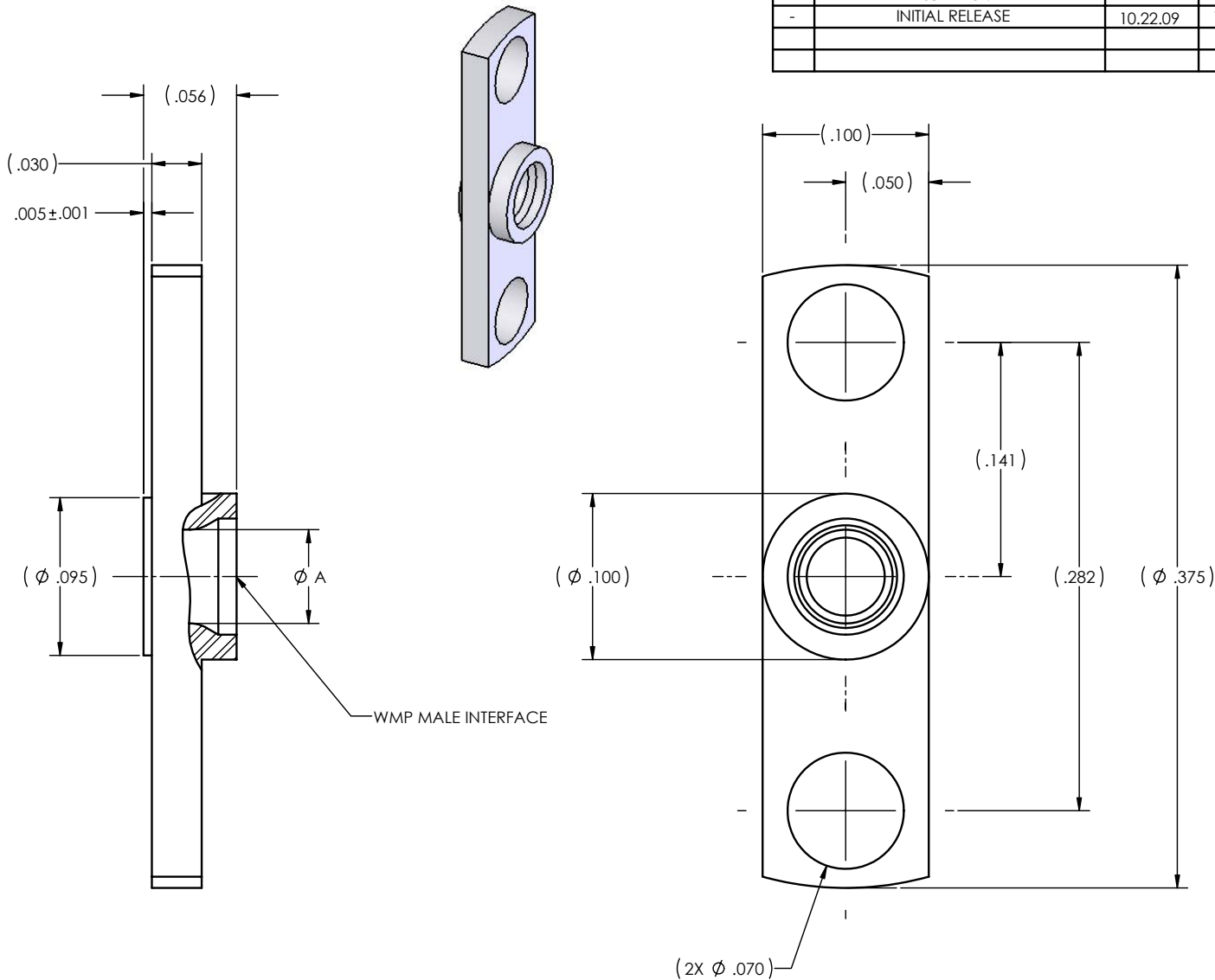


PART NO.	APPLICABLE NOTE(S)	INTERFACE(S)	Ø A
-1SF	1,2	DETENT	(.0570)
-2SF	1,2	SMOOTH BORE	(.0600)

REVISIONS			
REV	DESCRIPTION	DATE	BY
-	INITIAL RELEASE	10.22.09	YP



- NOTE(S):
- MATERIAL:
 - 303 STAINLESS STEEL PER ASTM A-582.
 - FINISH:
 - PASSIVATED PER ASTM A967.

APPLICABLE CARLISLE IT DOCUMENTS		
WORK STANDARD	PROD INSTRU	ASSY INSTRU
NA	NA	NA

THIS DRAWING EMBODIES A CONFIDENTIAL PROPRIETARY DESIGN ORIGINATED BY CARLISLE INTERCONNECT TECHNOLOGIES & ALL DESIGN, MANUFACTURING, REPRODUCTION, USE & SALE RIGHTS REGARDING THE SAME ARE EXPRESSLY RESERVED. IT IS SUBMITTED UNDER A CONFIDENTIAL RELATIONSHIP FOR A SPECIFIED PURPOSE & THE RECIPIENT AGREES BY ACCEPTING THIS DRAWING NOT TO SUPPLY OR DISCLOSE ANY INFORMATION REGARDING IT TO ANY UNAUTHORIZED PERSON TO INCORPORATE IN OTHER PROJECTS ANY SPECIAL FEATURES PECULIAR TO THIS DESIGN. ALL PATENT RIGHTS HERETO ARE EXPRESSLY RESERVED BY CARLISLE INTERCONNECT TECHNOLOGIES, LONG BEACH, CALIFORNIA 90815.

- TOLERANCES AND NOTES
EXCEPT AS NOTED
DIMENSIONS ARE IN INCHES.
LINEAR .XX ± .015
FRACTION ± 1/32
- MACHINE FINISH: $\sqrt{}$ RMS
 - BREAK ALL SHARP EDGES .003 MAX.
 - MACHINED FILLETS .005 MAX.
 - MACHINED SURFACES SQUARE TO RESPECTIVE AXIS WITHIN .005 INCHES PER INCH.
 - MACHINED DIAMETERS CONCENTRIC WITHIN .002 T.I.R.
 - DIMENSIONS TO BE MET BEFORE PLATING.
 - CHAMFER ALL THREADS 45°.
 - THREADS PER H-28
 - REMOVE FRAYED EDGES ON TEFLON.
 - REMOVE ALL BURRS.

MATERIAL	
APPROVAL INITIALS	DATE
DRAWN BY YPHAN	10.22.09
CHECKED BY	
TEST ENGR	
QUALITY	
DESIGN ENGR PCV	10.30.09
MFG ENGR	

SIZE	SPECIFICATION	PROCUREMENT
CARLISLE Interconnect Technologies Long Beach, CA 90815		
TITLE WMP MALE 2 HOLE FLANGE MOUNT SHROUD		
SCALE 20:1	SUB-DIRECTORY\FILE NAME _OL/	SHEET 1 OF 1
SIZE C 30990	DRAWING NO. WP203	REV. -