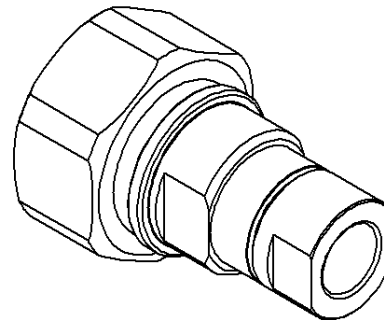
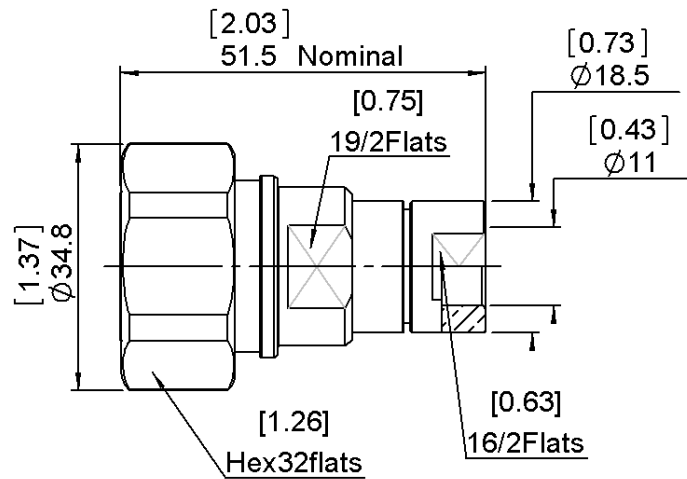


**STRAIGHT PLUG EZ FIT TYPE**

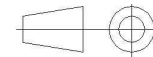
**R185A.032.200**

**CABLE 3/8" SUPERFLEXIBLE CORRUGATED**

Series : ECO 7/16



All dimensions are in mm.



COMPONENTS	MATERIALS	PLATING (µm)
BODY	BRASS	BBR
CENTER CONTACT	BRONZE	SILVER
OUTER CONTACT		
INSULATOR	PTFE	
GASKET	SILICONE RUBBER	
OTHERS PARTS	BRASS	BBR
-	-	-
-	-	-

**Issue : 0926 A**

In the effort to improve our products, we reserve the right to make changes judged to be necessary.

**RADIAL**

**STRAIGHT PLUG EZ FIT TYPE****R185A.032.200****CABLE 3/8" SUPERFLEXIBLE CORRUGATED**

Series : ECO 7/16

**PACKAGING**

Standard	Unit	Other
<b>20</b>	<b>'W' option</b>	<b>Contact us</b>

**SPECIFICATION****ELECTRICAL CHARACTERISTICS**

Impedance	<b>50</b>	$\Omega$
Frequency	<b>0-3</b>	GHz
VSWR	<b>1.1 + 0.0000</b>	x F(GHz) Maxi
Insertion loss	<b>0.05</b>	$\sqrt{F}(\text{GHz})$ dB Maxi
RF leakage	- ( <b>NA</b> )	- F(GHz)) dB Maxi
Voltage rating	<b>900</b>	Veff Maxi
Dielectric withstanding voltage	<b>1500</b>	Veff mini
Insulation resistance	<b>5000</b>	M $\Omega$ mini

**CABLE ASSEMBLY**

Stripping	a	b	c	d	e	f
mm	8.00	16.0	26.0	0.00	2.00	0.00

Assembly instruction :

Recommended cable(s)

FSJ2-50-3/8"HELIAX

M2933Z

M2935Z

**MECHANICAL CHARACTERISTICS**

Center contact retention		
Axial force – Mating end	<b>200</b>	N mini
Axial force – Opposite end	<b>100</b>	N mini
Torque	<b>NA</b>	N.cm mini

Characteristics indicated on this data sheet are those that can be achieved with the highest performance cable. Intrinsic limitations of the cable may diminish the performance of the assembly

Cable retention

- pull off	<b>250</b>	N mini
- torque	<b>NA</b>	N.cm

**TOOLING**

Part Number	Description	Hexagon
.	.	.
R282.010.040	STRIPPING TOOL	

Recommended torque		
Mating	<b>3500</b>	N.cm
Panel nut	<b>NA</b>	N.cm
Clamp nut	<b>950</b>	N.cm
A/F clamp nut	<b>19.0000</b>	mm

Mating life	<b>100</b>	Cycles mini
Weight	<b>140.8000</b>	g

**OTHER CHARACTERISTICS**

Watertightness:IP67

**ENVIRONMENTAL**

Operating temperature	<b>-40/+85</b>	$^{\circ}\text{C}$
Hermetic seal	<b>NA</b>	Atm.cm3/s
Panel leakage	<b>NA</b>	

**Issue : 0926 A**

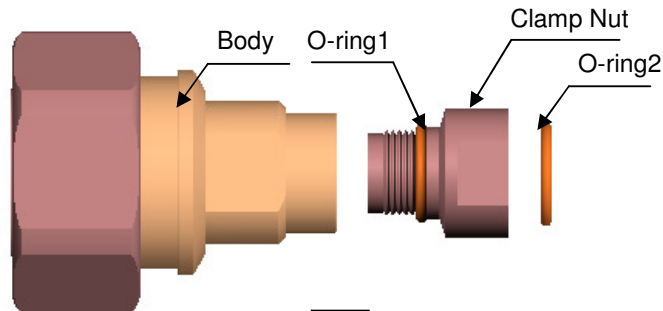
In the effort to improve our products, we reserve the right to make changes judged to be necessary.



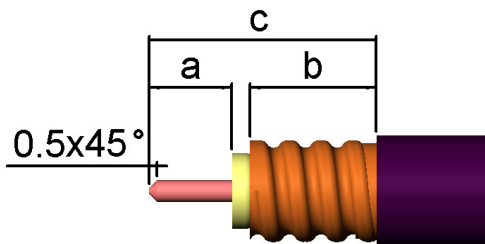
## STRAIGHT PLUG EZ FIT TYPE

**R185A.032.200**
**CABLE 3/8" SUPERFLEXIBLE CORRUGATED**

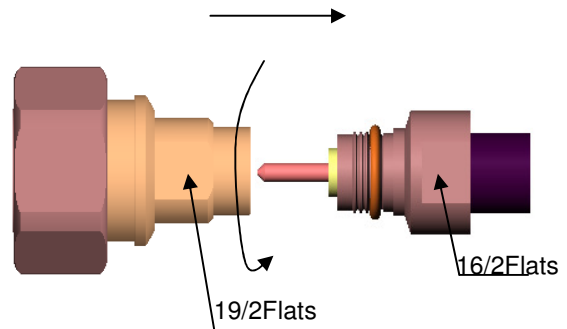
Series : ECO 7/16


**1**

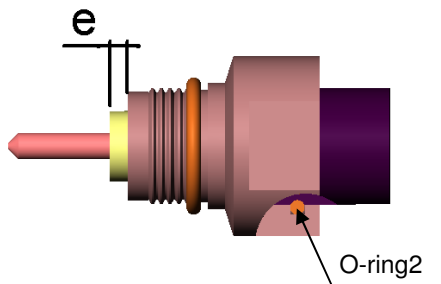
- Strip the cable .
- Do not damage the outer conductor .
- The end surface of inner conductor should be chamfered.
- Remove impurities such as copper scrap and burr on the end surface of the cable.


**3**

- Screw the body onto the cable assembly .
- Recommended coupling torque : 950N.cm


**2**

- Put the O-ring onto the clamp nut.
- Screw the clamp nut along the outer conductor of the cable, make sure dimension e after tightening.


**Issue : 0926 A**

In the effort to improve our products, we reserve the right to make changes judged to be necessary.

**RADIAL** 