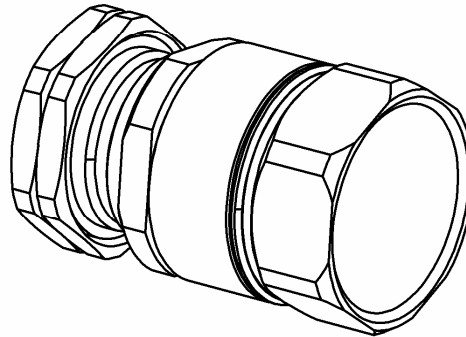
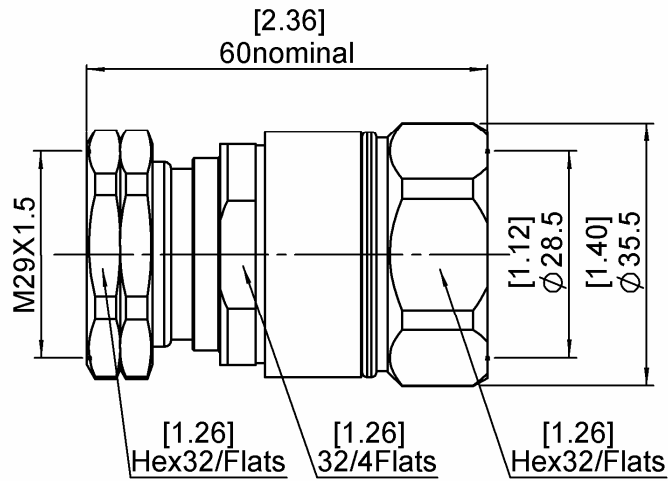


STRAIGHT PLUG EZ FIT TYPE

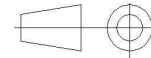
R185A.033.020

7/8" FLEXIBLE CORRUGATED CABLE

Series : ECO 7/16



All dimensions are in mm.



COMPONENTS	MATERIALS	PLATING (µm)
BODY	BRASS	BBR
CENTER CONTACT	BRONZE, BRASS	SILVER
OUTER CONTACT		
INSULATOR	PC	
GASKET	SILICONE RUBBER	
OTHERS PARTS	BRASS	BBR
-	-	-
-	-	-

Issue : 0927 A

In the effort to improve our products, we reserve the right to make changes judged to be necessary.

 RADIAL 

STRAIGHT PLUG EZ FIT TYPE**R185A.033.020****7/8" FLEXIBLE CORRUGATED CABLE**

Series : ECO 7/16

PACKAGING

Standard	Unit	Other
1	-	Contact us

SPECIFICATION**ELECTRICAL CHARACTERISTICS**

Impedance	50	Ω
Frequency	0-3	GHz
VSWR	1.1 + 0.0000	x F(GHz) Maxi
Insertion loss	0.05	$\sqrt{F}(\text{GHz})$ dB Maxi
RF leakage	- (NA)	- F(GHz)) dB Maxi
Voltage rating	1400	Veff Maxi
Dielectric withstanding voltage	2500	Veff mini
Insulation resistance	10000	M Ω mini

CABLE ASSEMBLY

Stripping	a	b	c	d	e	f
mm	28.0	0.00	0.00	0.00	0.00	0.00

Assembly instruction :

Recommended cable(s)

LCF 7/8" Cu2Y

LDF5-50A-7/8"

M 1474 Z

Characteristics indicated on this data sheet are those that can be achieved with the highest performance cable. Intrinsic limitations of the cable may diminish the performance of the assembly

Cable retention

- pull off	500 N mini
- torque	NA N.cm

MECHANICAL CHARACTERISTICS

Center contact retention	
Axial force – Mating end	200 N mini
Axial force – Opposite end	100 N mini
Torque	NA N.cm mini

Recommended torque

Mating	3500 N.cm
Panel nut	NA N.cm
Clamp nut	2500 N.cm
A/F clamp nut	32.0000 mm

Mating life	100 Cycles mini
Weight	172.3000 g

TOOLING

Part Number	Description	Hexagon
R282.011.060	STRIPPING TOOL FOR CABLE 7/8 CORRUGATED	

OTHER CHARACTERISTICS

Watertightness: IP67

ENVIRONMENTAL

Operating temperature	-40/+85 ° C
Hermetic seal	NA Atm.cm3/s
Panel leakage	NA

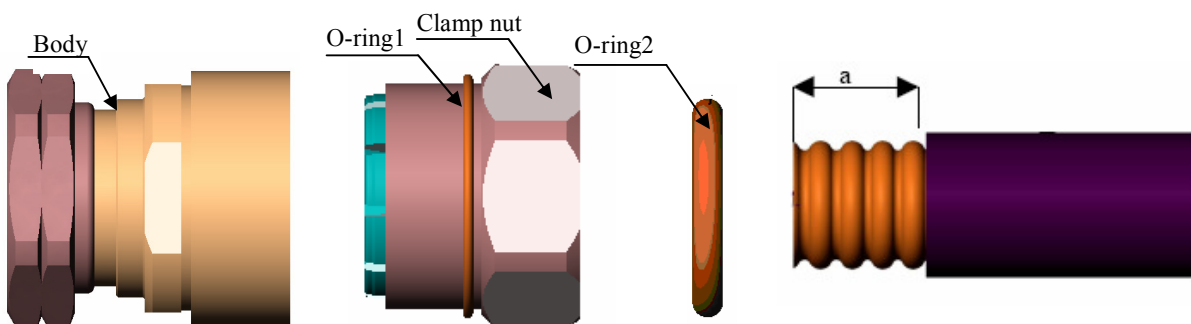
Issue : 0927 A

In the effort to improve our products, we reserve the right to make changes judged to be necessary.

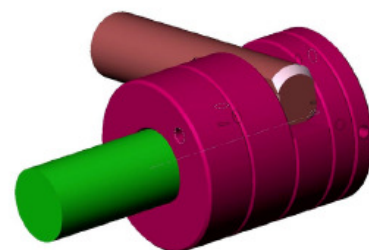


STRAIGHT PLUG EZ FIT TYPE**R185A.033.020****7/8" FLEXIBLE CORRUGATED CABLE**

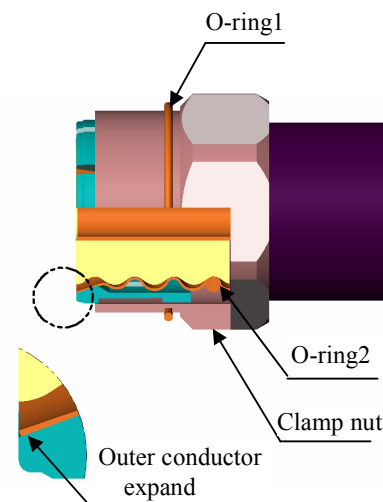
Series : ECO 7/16

**1) STRIPPING OF THE SHEATH**

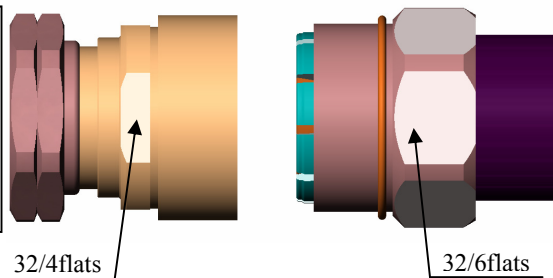
- Cut the front extremity of the cable in the summit of a annule with a hacksaw.
- Raise the handle and introduce the cable until it stops in the stripping tool.
- Push down the handle by exerting a light pressure on it, keep turning the tool until it turns freely +appointing of the interior of the soul of the cable.
- Raise the handle, and slide the cable out.
- Split the sheath with a tool cutting perpendiculary to the previously undertaken split.
- Remove the burrs.

**2) CABLE MOUNTING**

- Put the O-ring2 in the trough of the cable.
- Mount the clamp nut on the cable, until the clipsage of the elastic contact on the first annule.
- To push the cable assembly forward to stop on the elastic contact.

**3) MOUNTING CABLE**

- Mount the clamp nut with the cable in the body of the connector.
- Recommended torque: 2500N.cm

**Issue : 0927 A**

In the effort to improve our products, we reserve the right to make changes judged to be necessary.

RADIAL 