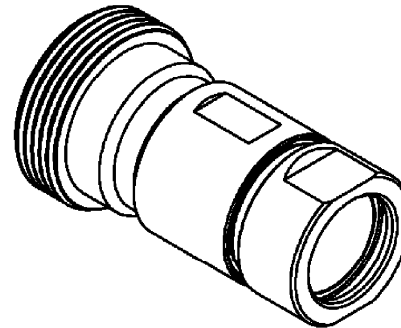
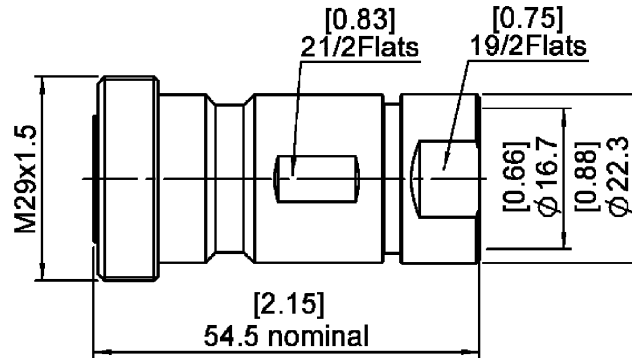


STRAIGHT JACK EZ FIT TYPE

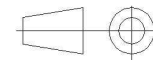
1/2" CORRUGATED CABLE

R185A.216.020

Series : ECO 7/16



All dimensions are in mm.



COMPONENTS	MATERIALS	PLATING (µm)
BODY	BRASS	BBR
CENTER CONTACT	BRONZE	SILVER
OUTER CONTACT		
INSULATOR	PTFE	
GASKET	SILICONE RUBBER	
OTHERS PARTS	BRASS	BBR
-	-	-
-	-	-

Issue : 0926 A

In the effort to improve our products, we reserve the right to make changes judged to be necessary.

RADIAL 

STRAIGHT JACK EZ FIT TYPE**R185A.216.020****1/2" CORRUGATED CABLE**

Series : ECO 7/16

PACKAGING

Standard	Unit	Other
1	-	Contact us

SPECIFICATION**ELECTRICAL CHARACTERISTICS**

Impedance	50	Ω
Frequency	0-3	GHz
VSWR	1.1 + 0.000	x F(GHz) Maxi
Insertion loss	0.05	$\sqrt{F}(\text{GHz})$ dB Maxi
RF leakage	- (NA)	- F(GHz)) dB Maxi
Voltage rating	1400	Veff Maxi
Dielectric withstanding voltage	2500	Veff mini
Insulation resistance	10000	M Ω mini

CABLE ASSEMBLY

Stripping	a	b	c	d	e	f
mm	5.50	20.0	0.00	0.00	0.00	0.00

Assembly instruction :

Recommended cable(s)

LCF 1/2" Cu2y

LDF4-50A - 1/2"

M 1473 Z

M 2831 Z

Characteristics indicated on this data sheet are those that can be achieved with the highest performance cable. Intrinsic limitations of the cable may diminish the performance of the assembly

Cable retention

- pull off	400 N mini
- torque	NA N.cm

MECHANICAL CHARACTERISTICS

Center contact retention	
Axial force – Mating end	200 N mini
Axial force – Opposite end	100 N mini
Torque	NA N.cm mini

TOOLING

Recommended torque	
Mating	NA N.cm
Panel nut	NA N.cm
Clamp nut	800 N.cm
A/F clamp nut	19.000 mm

Part Number	Description	Hexagon
.	.	.
R282.011.050	STRIPPING TOOL FOR CABLE 1/2 CORRUGATED	

Mating life	100 Cycles mini
Weight	98.400 g

OTHER CHARACTERISTICS

Watertightness:IP67

ENVIRONMENTAL

Operating temperature	-40/+85 ° C
Hermetic seal	NA Atm.cm3/s
Panel leakage	NA

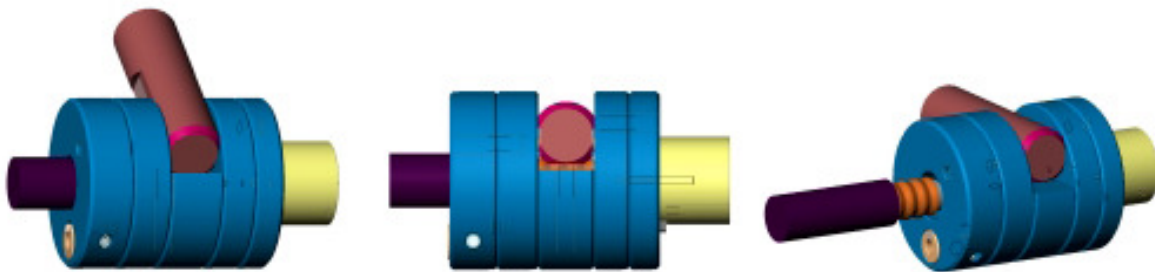
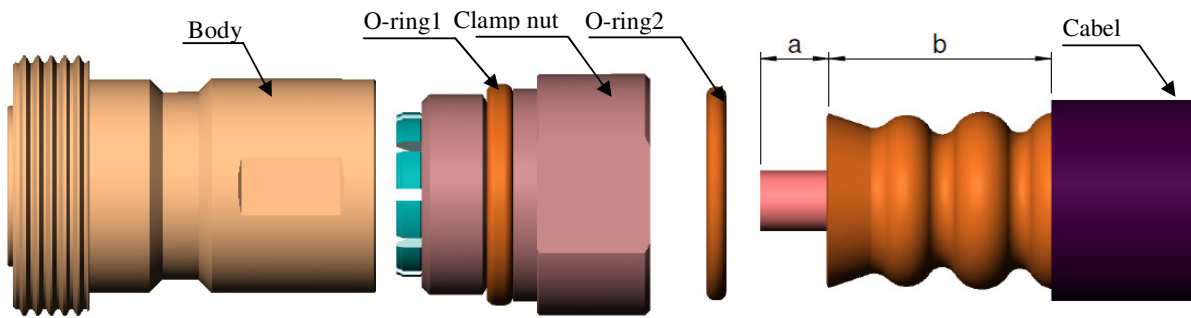
Issue : 0926 A

In the effort to improve our products, we reserve the right to make changes judged to be necessary.



STRAIGHT JACK EZ FIT TYPE
1/2" CORRUGATED CABLE
R185A.216.020

Series : ECO 7/16


1) STRIPPING OF THE SHEAT AND THE OUTER CONDUCTOR

- Cut the cable end in a hollow with a hacksaw .
- Raise the handle and introduce the cable until it stops in the stripping tool.
- Push down the handle by exerting a light pressure on it , keep turning the tool until it turns freely.
- Hold the handle down , and turn the tool (of approximately $\frac{1}{4}$ of tour) in the opposite direction , while pulling gently on the cable in order to release pieces of the cable cut.
- Raise the handle, slide the cable out and remove loose pieces of cable.
- In case of cut parts jammed in the tool : raise the handle , introduce again the stripped cable in the tool, screw slightly the cable into the copper previously cut and remove cable + loose parts.
- Push down again the handle.

Issue : 0926 A

In the effort to improve our products, we reserve the right to make changes judged to be necessary.

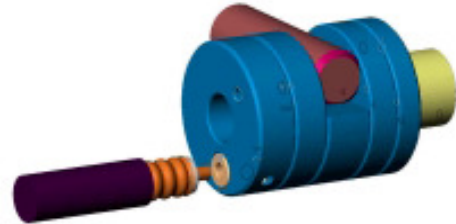
RADIAL

STRAIGHT JACK EZ FIT TYPE**R185A.216.020****1/2" CORRUGATED CABLE**

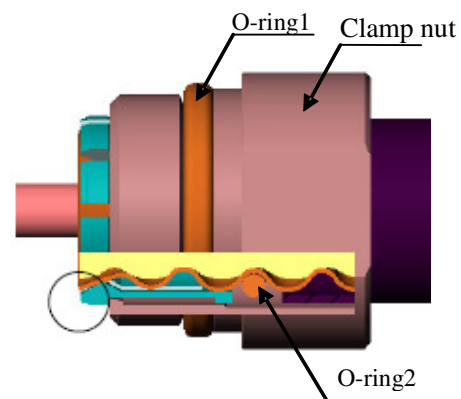
Series : ECO 7/16

2) POINTING OF THE CABLE

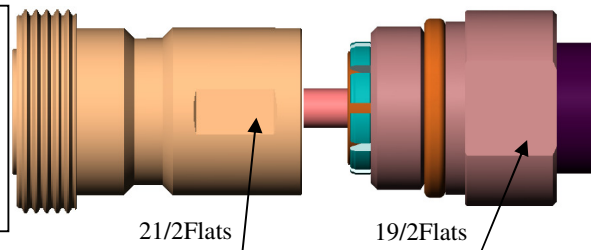
- Introduce the cable in the tool as shown.
- Turn the tool to point the inner conductor of the cable.

**3) CABLE MOUNTING**

- Put the O-ring2 in the trough of the cable.
- Mount the clamp nut on the cable, until the clipsage of the elastic contact on the first annule.
- To push the cable assembly forward to stop on the elastic contact.

Outer conductor
expand**4) MOUNTING CABLE**

- Mount the clamp nut with the cable in the body of the connector.
- Couple of tightening recommended: 800N.cm

**Issue : 0926 A**

In the effort to improve our products, we reserve the right to make changes judged to be necessary.

RADIAL 