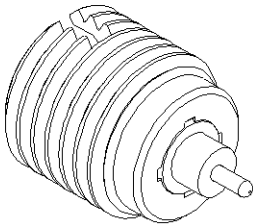
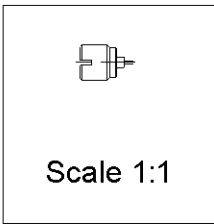
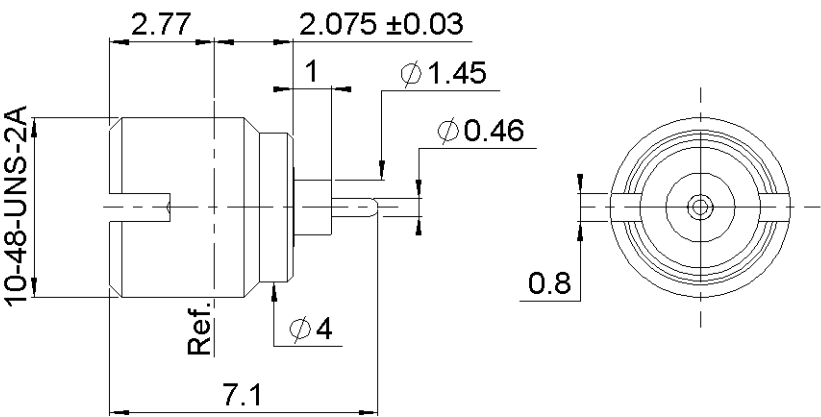
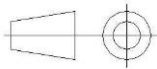


PAGE 1/3	ISSUE 26-11-15B	SERIES SMP	PART NUMBER R222561701
----------	-----------------	------------	------------------------



All dimensions are in mm.



COMPONENTS	MATERIALS	PLATING ( $\mu\text{m}$ )
Body	STAINLESS STEEL	PASSIVATED.
Center contact	BERYLLIUM COPPER	GOLD OVER NICKEL
Outer contact	-	-
Insulator	PTFE	-
Gasket	-	-
Others parts	-	-
-	-	-
-	-	-

PAGE 2/3

ISSUE **26-11-15B**

SERIES **SMP**

PART NUMBER **R222561701**

## PACKAGING

Standard	Unit	Other
<b>100</b>	<b>Contact us</b>	<b>Contact us</b>

## ELECTRICAL CHARACTERISTICS

Impedance		<b>50</b>	Ω
Frequency		<b>0-40</b>	GHz
VSWR	<b>1.3*</b>	<b>+</b>	<b>0.0000</b> x F(GHz) Maxi
Insertion loss		<b>0.12</b>	√F(GHz) dB Maxi
RF leakage	- (	<b>NA</b>	- F(GHz) dB Maxi
Voltage rating		<b>335</b>	Veff Maxi
Dielectric withstanding voltage		<b>500</b>	Veff mini
Insulation resistance		<b>5000</b>	MΩ mini

## MECHANICAL CHARACTERISTICS

Center contact retention			
Axial force – Mating End		<b>3</b>	N mini
Axial force – Opposite end		<b>6.68</b>	N mini
Torque		<b>NA</b>	N.cm mini
Recommended torque			
Mating		<b>NA</b>	N.cm
Panel nut		<b>90</b>	N.cm
Mating life		<b>1000</b>	Cycles mini
Weight		<b>0.3990</b>	g

## ENVIRONMENTAL

Operating temperature	<b>-65/+165</b>	°C
Hermetic seal		Atm.cm3/s
Panel leakage	<b>NA</b>	

## SPECIFICATION

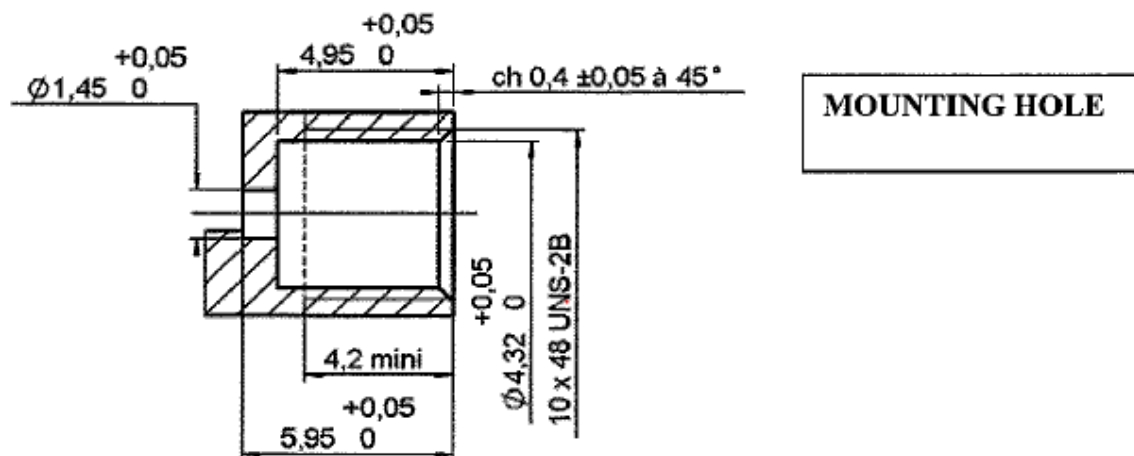
## OTHER CHARACTERISTICS

Assembly instruction:

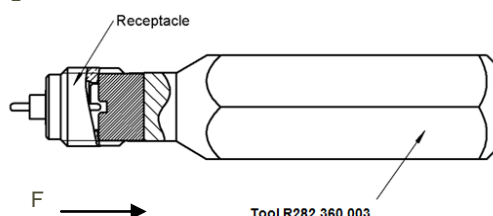
Others:

**\*Coaxial transmission line**

## ADDITIONAL INFORMATIONS MOUNTING AND REPLEACEMENT INSTRUCTIONS



1. Connector must be screwed or unscrewed with adapted torque driver R282.339.001 (recommended coupling torque : 90 Ncm) screw driver : R282.360.003
2. Slide on the connector in F direction until it stops against the tool.



3. Screw the whole into the housing until activation of the torque driver.
4. Withdraw the tool and solder the center contact.

