



# Skyworks Solutions, Inc.

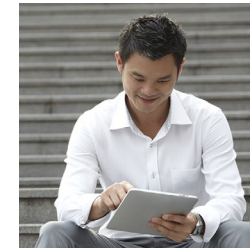
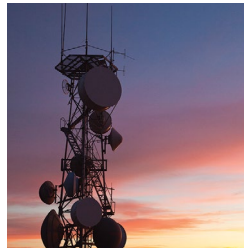
Corporate Overview



## The Skyworks Promise

At Skyworks, we are driven by one guiding principle: simplicity. Skyworks streamlines and solves the real-world challenges of our customers. Because we offer the complete range of advanced wireless communications technologies, we turn complication into clarity. When we create integrated systems that require less space and power, we turn encumbrance into efficiency. When we align all of our resources to meet our customers' specific needs, we turn anxiety into accountability. And when we provide a complete solution that allows customers to focus on market demands rather than operational demands, we turn obstacles into opportunity.

*At Skyworks, we turn complexity into breakthrough simplicity, and simplicity into your competitive advantage.*



## Skyworks Solutions

Skyworks Solutions, Inc. is an innovator of high performance analog semiconductors. Leveraging core technologies, Skyworks supports automotive, broadband, wireless infrastructure, energy management, GPS, industrial, medical, military, wireless networking, smartphone, and tablet applications. The Company's portfolio includes amplifiers, attenuators, circulators, demodulators, detectors, diodes, directional couplers, front-end modules, hybrids, infrastructure RF subsystems, isolators, lighting and display solutions, mixers, modulators, optocouplers, optoisolators, phase shifters, PLLs/synthesizers/VCOs, power dividers/combiners, power management devices, receivers, switches, and technical ceramics.

Headquartered in Woburn, Massachusetts, USA, Skyworks is worldwide with engineering, manufacturing, sales, and service facilities throughout Asia, Europe, and North America.

New products are continually being introduced at Skyworks. For the latest product information, visit our Web site at [www.skyworksinc.com](http://www.skyworksinc.com), contact your local sales office, or email us at [sales@skyworksinc.com](mailto:sales@skyworksinc.com).

## The Skyworks Advantage

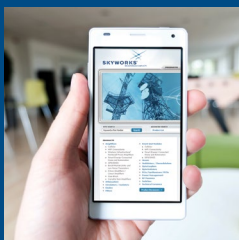
- Broad front-end module and precision analog product portfolio
- Market leadership in key product segments
- Solutions for all air interface standards, including CDMA, GSM / GPRS / EDGE, LTE, WCDMA, and WLAN
- Engagements with a diverse set of top-tier customers
- Strategic partnerships with all leading baseband suppliers
- Analog, RF, and mixed-signal design capabilities
- Access to all key process technologies: GaAs HBT, pHEMT, BiCMOS, SiGe, CMOS and RF CMOS, and Silicon
- World-class manufacturing capabilities and scale
- Unparalleled level of customer service and technical support
- Commitment to technology innovation



***Skyworks Solutions, Inc.***  
***(NASDAQ: SWKS)***

***An innovator of high performance  
analog semiconductors***

*To execute our strategy, Skyworks utilizes its broad product portfolio to meet the demanding requirements for today's wireless communication systems.*



## Leveraging Core Technologies

Skyworks deploys various technology building blocks, such as radio frequency integrated circuits (RFICs) and analog/mixed-signal processing cores, across multiple product platforms. We believe that this approach creates economies of scale in research and development, and facilitates a reduction in the time-to-market for key products.

## Increasing Integration Levels

High levels of integration enhance the benefits of our products by reducing production costs through the use of fewer external components, reduced board space and improved system assembly yields. By combining all of the integral functionality, Skyworks can deliver additional semiconductor content, thereby offering existing and potential customers more compelling and cost-effective solutions.

## Capturing Additional Semiconductor Content

We enable our customers to start with individual components as necessary, and then migrate up the product integration ladder. We believe that our highly integrated solutions enable our customers to improve their time-to-market while allowing them to focus on product differentiation through a broader range of more sophisticated, next-generation features.

## Focusing on a Leadership Customer Base

Skyworks supports every top-tier wireless handset manufacturer as well as smartphone provider. We are also diversifying our customer base as we introduce highly innovative analog products in support of medical, automotive, consumer and broadband applications. We believe that the efficiency learned from working with highly agile handset market leaders will prove to be a competitive advantage in these new markets.

## Delivering Operational Excellence

Skyworks' operations team leverages world-class manufacturing technologies and enables highly integrated solutions. Skyworks will vertically integrate where it can differentiate or will otherwise enter alliances and partnerships for leading-edge capabilities. These partnerships and alliances are designed to ensure product leadership and competitive advantage in the marketplace. We are focused on achieving the industry's shortest cycle times, highest yields and ultimately the lowest cost structure.

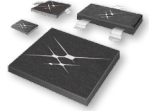
## Key Products

### Front-end Modules and Amplifiers



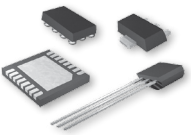
Skyworks is a market leader in meeting the needs of all leading handset manufacturers and smartphone providers. By sweeping more functionality into our solutions, we improve size and battery life. Our GaAs, SiGe, pHEMT, and HBT power amplifier and front-end module portfolio addresses GSM, GPRS, EDGE, WCDMA, CDMA, and LTE air standards.

### Wireless Infrastructure



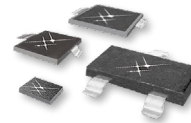
Skyworks leverages integrated RF product and technology capabilities across strong base station channel relationships. This product line, focused on high-performance devices with excellent efficiency and reliability, includes all of the core component functionality integrated into System in Package (SiP) for base stations transceivers. Our products include System on Chip (SoC) and critical integrated component functions allowing the mixing, amplification and signal conditioning required for base stations to handle the voice and data communications to and from thousands of cell phones simultaneously.

### Power Management



Skyworks offers an expansive portfolio of analog semiconductor products focused on enabling energy-efficient devices for consumer electronics, computing, communications, smartphone, tablet, set-top box and infrastructure markets. Power management solutions include battery chargers, DC/DC converters, voltage regulators, LED drivers, multi-function power management units (PMIC/PMU), power half bridges and voltage detectors.

### Precision Analog Components



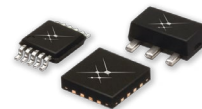
Skyworks has a long history in the design and manufacture of specific function discrete components for wireless transmission. The products address a broad range of markets and applications from cellular and consumer devices to industrial, military, medical, automotive, security, and more. Our portfolio includes low-noise, low-cost, power-efficient, linear RF components such as RF switches, amplifiers, PLLs, timing and delay modules, low noise amplifiers, RF / microwave diodes, attenuators, and VCOs.

### WiFi Connectivity



Skyworks offers a variety of front-end modules, low noise amplifiers and switches for WLAN and ZigBee® applications. Our fully integrated WLAN front-end modules satisfy any 802.11a,b,g,n,ac combination application. These high-linearity, high-performance, low-cost front-end solutions enable the development of complete architectures with 20 to 40 fewer components, saving valuable space in PCMCIA, Mini PCI, USB, and compact flash platforms.

### Smart Energy



Skyworks supports ZigBee®, 802.15.4, 801.15.4g, Bluetooth®, and other ISM band and proprietary applications for smart meters, home appliances, security and automation, and consumer electronics. Our standard components offer maximum design flexibility while our highly-integrated custom front-end modules allow board space reduction for space-constrained applications, and speed up the design process.



*We deliver more than one billion units per year—as individual components, modules or fully-integrated solutions.*



## The Lowest Cost Supply Chain

In this current market environment, cost and time-to-market are critical. A delicate balance exists: when manufacturers take on too much inventory, it is a liability that affects their profitability; but they also need the flexibility to capitalize on upside in demand without paying a premium.

Skyworks uses both internal and external sources to ensure sufficient supply and the lowest total cost. Whether we draw on our own operations for GaAs wafers and module packaging, or turn to our strategic partners for CMOS, RF silicon, and standard packaging technologies, Skyworks provides customers with quantities they need, when they need them, and at the lowest possible cost. The result is a competitive edge for manufacturers in both time-to-market and margins.

## World-Class Manufacturing Facilities

Skyworks delivers more than 1 billion units per year as individual components, modules or fully integrated systems. We have state-of-the-art manufacturing facilities in:

- **Woburn, Massachusetts:** 158,000-square-foot facility used for the production of 4-inch GaAs wafers (MESFET/pHEMT), 4-inch silicon wafers for switches, control devices, amplifiers, and millimeter wave devices.
- **Newbury Park, California:** 185,000 square-foot facility with state-of-the-art manufacturing for the production of 6-inch GaAs (HBT/BiFET/BiHEMT) power amplifier wafers.
- **Adamstown, Maryland:** 130,000-square-foot facility used for the production of ferrite, dielectric, filter and coaxial resonator products; home of Trans-Tech (a wholly-owned subsidiary of Skyworks Solutions, Inc.), a vertically integrated industry leader in ceramic products.
- **Mexicali, Mexico:** 380,000-square-foot facility providing assembly, test and finishing services for a wide portfolio of semiconductor solutions including modules, chip-scale and FPBGA packages, as well as RF, analog, and systems test.





## A Worldwide Commitment to Total Customer Satisfaction

### A Global Support Network

At Skyworks, we realize the success of our customers depends upon the reliability of our products and the strength of our services. Our mission is to be a solid, reliable link in our customers' supply chains. We put service-minded salespeople near our customers' facilities and highly skilled engineering teams in their labs. We understand the needs of our customers. We share their enthusiasm for the future and work as partners to get products to consumers as quickly as possible.



### Quality and Sustainability at Skyworks

We recognize that perfect quality, environmentally friendly products, and sustainable business practices are key differentiators in today's competitive environment. We integrate these principles across all business processes from design and development to manufacturing. Employing Six Sigma, we ensure a continuous improvement approach is used systematically and companywide. Skyworks' quality and environmental management systems are certified to ISO 9001 and ISO 14001 and Skyworks'

Woburn and Mexicali sites are ISO/TS 16949 certified. Our III (Innovate, Implement, and Improve) Quality Management System Plus program focuses on the pursuit of total customer satisfaction beyond standard requirements and regulations. Through our Green Initiative™, we are committed to manufacturing products that comply with global government directives and the most stringent customer and industry requirements. Our Sustainable business practices help ensure that we meet today's needs without compromising the ability of future generations to meet their own.

### A Culture That Breeds Success

The Skyworks culture is designed to promote fast decision making, uninhibited sharing of best practices, and a sense of individual ownership, so we can create unparalleled products and respond quickly to customer needs. These values lead to business agility and customer centricity — essential ingredients for success. We are an equal opportunity employer supporting diversity in the workplace.

**Skyworks Solutions, Inc.**

20 Sylvan Road, Woburn, MA 01801

USA: (781) 376-3000 • Asia: 886 2 2735 0399

Europe: 33 (0)1 43548540 • Fax: (781) 376-3100

Email: [sales@skyworksinc.com](mailto:sales@skyworksinc.com) • [www.skyworksinc.com](http://www.skyworksinc.com)

**NASDAQ: SWKS**



BRO255-13B 5/14  Printed on Recycled Paper.

