

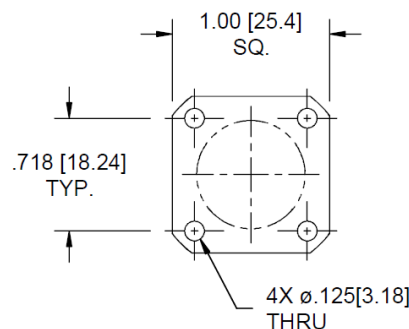
Adapters, Between Series Type N / SMA, Flange Mount

Up to 18 GHz

MODELS: AA-5306, 5307, 5308, 5309

Technical Specifications

Parameter	Value
Electrical	
Frequency Range	DC – 18 GHz
Standard Freq. Values	6 & 18 GHz
VSWR	DC – 4 GHz 1.04:1 max. 4 – 8 GHz 1.07:1 max. 8 – 18 GHz 1.12:1 max.
Impedance	50 Ohms
Operation Temp. Range	-65°C to +125°C
Mechanical	
Connectors Mates with MIL-STD-348	Passivated Stainless Steel
Conductors	Gold Plated Beryllium Copper



4-Hole Flange
Detail-Typ.

How To Order

Model #: **530X-YYY**

Base Number Freq. Range
 = DC-18 GHz
 067 = DC-6 GHz

Order Examples

Model number: **5307**
 DC-18 GHz
 Type N female / SMA male

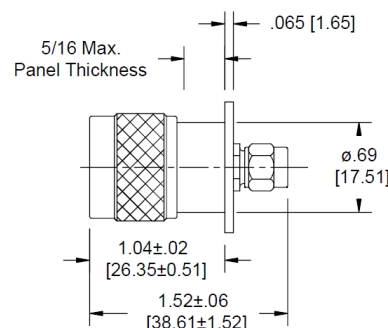
Model number: **5306-067**
 DC-6 GHz
 Type N male / SMA male

Model Number AA-5306

Type N Male / SMA Male
 Length: 1.52 ±.06 [38.61 ±1.52]
 As pictured

Model Number 5308

Type N Male / SMA Female
 Length: 1.48 ±.05 [37.59 ±1.27]
 Not shown

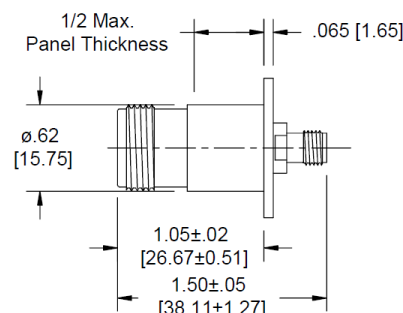


Model Number 5307

Type N Female / SMA Male
 Length: 1.54 ±.05 [39.12 ±1.27]
 Not shown

Model Number 5309

Type N Female / SMA Female
 Length: 1.50 ±.05 [38.1 ±1.27]
 Not shown



**Dimensions in brackets are expressed in millimeters and are for reference only.

sales@am.spectrumcontrol.com

Approved for Release: November 2024/Brown

Spectrum Control reserves the right to make changes to datasheets at any time without notice.