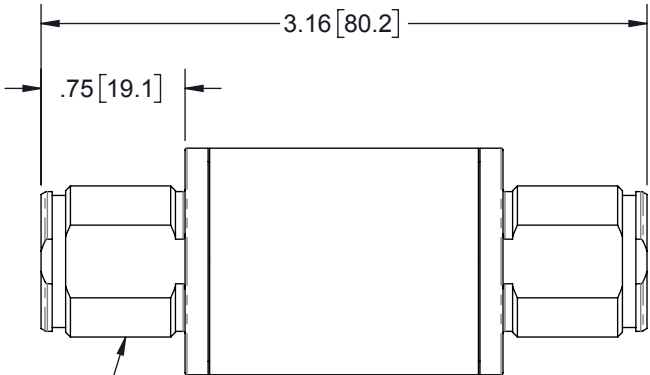
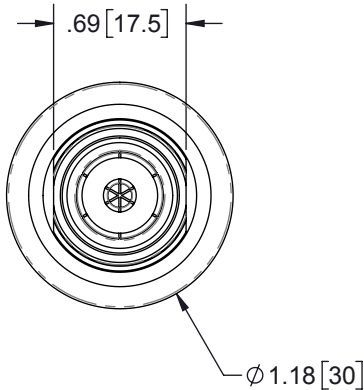
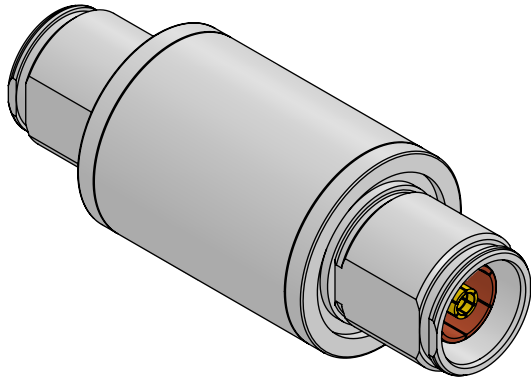


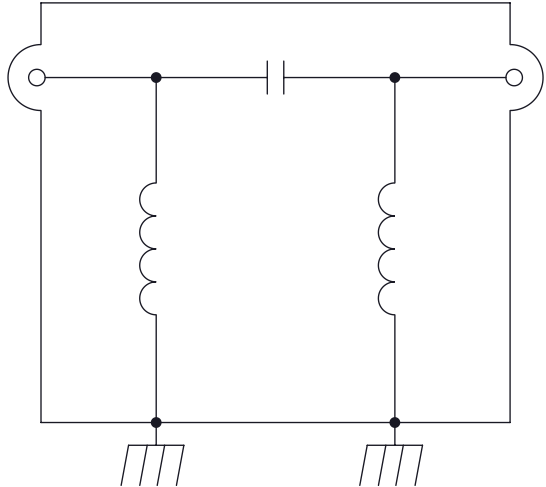
REVISIONS				
REV.	DESCRIPTION	ECN	DATE	APPROVED
B	REFER TO ECN	14234	11/28/17	RJS



2X FEMALE 4.3-10 DIN
CONNECTOR
(M20 X 1)

APPLICATION:
DC BLOCK/RF ONLY
BULKHEAD MOUNT BI-DIRECTIONAL
WEATHERPROOF WHEN INSTALLED
FREQUENCY RANGE:
698MHz TO 2.7GHz
AVG CONTINUOUS POWER:
500W @ 920MHz
(750W @ 50°C)
INSERTION LOSS:
698MHz TO 2.7GHz, TYP. 0.1dB
RETURN LOSS:
698MHz TO 2.7GHz, TYP. 28dB, MAX 25dB
PIM 3rd ORDER:
TYP: -173dBc (-130dBm), 2x20W
MAX: -155dBc (-112dBm), 2x20W
MAX SURGE:
40kA MAX, 20kA MULTIPLE STRIKE
IEC 61000-4-5 8/20µs WAVEFORM
THROUGHPUT ENERGY:
TYP: 0.5nJ FOR 2kA @ 8/20µs WAVEFORM
LET THROUGH VOLTAGE:
TYP: 300mV FOR 2kA @ 8/20µs WAVEFORM
TEMPERATURE:
-50°C TO +85°C STORAGE/OPERATING
VIBRATION:
1G @ 5Hz TO 100Hz
MATERIAL:
BODY: TRI-METAL PLATING OVER BRASS
DIELECTRIC: PTFE
CENTER PINS: TRI-METAL PLATING OVER BRASS
ENVIRONMENTAL:
MEETS IEC 60529 IP67 WHEN CONNECTED
MEETS BELLCORE #TA-NWT-000487 PROCEDURE
4.11, 120MPH WIND DRIVEN RAIN INTRUSION TEST
CE COMPLIANT
RoHS COMPLIANT

SCHEMATIC



HARDWARE KIT CONTENTS	
QTY	DESCRIPTION
1	NUT M20 X 1 SS
1	WASHER .82ID FLAT SS
1	SILICONE O-RING 019
1	RING TERM 6AWG DIN .82" ID
1	POLYBAG 3x5 2MIL

CUSTOMER APPROVAL: _____ DATE: _____

ALL DIMENSIONS SHOWN ARE FOR REFERENCE ONLY.

THESE COMMODITIES, TECHNOLOGY OR
SOFTWARE WERE EXPORTED FROM THE
UNITED STATES IN ACCORDANCE WITH THE
EXPORT ADMINISTRATION REGULATIONS.
DIVERSION CONTRARY TO U.S. LAW PROHIBITED.

UNLESS OTHERWISE SPECIFIED LEADING DIMENSIONS ARE INCHES DIMENSIONS IN [] ARE MILLIMETERS TOLERANCES: FRACTIONS=± 1/32 .XX=± .03 ANGLES=± 1 ° .XXX=± .010		DRAWN DPM	DATE 10/5/2017	 TITLE CUSTOMER PRINT TSX-4310FF-P CUSTOMER SPECIFICATION		
		ENG APPD DWR	10/05/2017			
		PRODUCT MGR RC	10/5/2017			
		MARKETING APPD LJ	10/6/2017			
MATERIAL		PROJECT NO.		SIZE B	CAGE 30992	PART NUMBER TSX-4310FF-P
THIRD-ANGLE PROJECTION 		NOTICE: THE INFORMATION AND DESIGN IN THIS DOCUMENT IS THE PROPERTY OF TRANSECTOR SYSTEMS. ALL RIGHTS RESERVED.		SCALE 1:1	PROD CAT RFP	DOCUMENT NAME TSX-4310FF-P-C
				SHEET 1	OF 1	REV B