

UMB098A - PRELIMINARY

975-981 MHz Bandpass Filter

Features

- Low loss with high rejection
- Support universal footprint with UMB family

Applications

- Specialty Wireless Infrastructure applications



Part Dimensions: 56.4 × 14.0 × 14.7 mm • TBD g
Materials: Ag plated ceramic block with fused-tin plated brass shield

Description

Surface mount ceramic bandpass filter for TDD frequency band designed to share footprint with the UMB family. Superior rejection, insertion loss, reliability, as well as both peak and average power handling compared to other bandpass filter technologies.

Electrical Specifications

Parameter	Frequency (MHz)	Typical at 25°C	Spec. at 25°C	Spec. over -40°C to +85°C
Nominal Impedance	-	50 ohms	-	-
Average Input Power	-	-	-	10 Watt max
Peak Input Power	-	-	-	100 Watt max

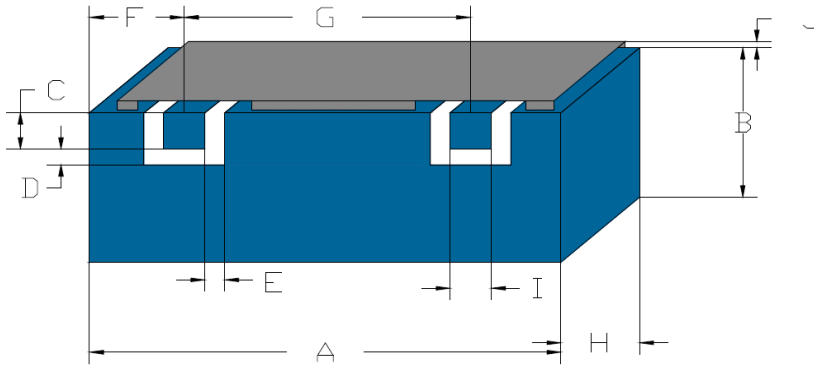
Input-Output Response

Passband Insertion Loss (single point)	975 - 981	1.0 dB	1.2 dB max	< 1.4 dB max
Passband Ripple	975 - 981	0.2 dB	0.4 dB max	0.5 dB max
Passband Return Loss	975 - 981	16 dB	14 dB min	14 dB min
Attenuation:	1 - 938	42 dB	40 dB min	40 dB min
	1018 - 1600?	42 dB	40 dB min	40 dB min

Note: CTS tests each unit to the critical specifications above. Subsequent audits may deviate due to repeatability among different test systems which shall not exceed these allowances.

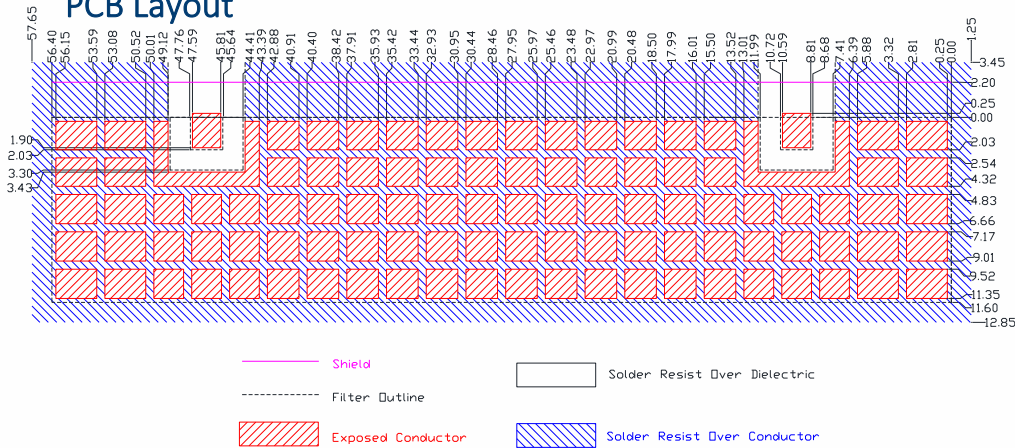
Specification Allowance	
Insertion Loss	0.1 dB
Return Loss	1.0 dB
Attenuation	1.0 dB

Mechanical Drawing

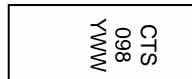


Dim.	Nominal (mm)	Tolerance (±mm or Max)
A	55.9	0.50
B	11.2	0.40
C	2.03	0.13
D	1.27	0.13
E	1.27	0.13
F	n/a	
G	37.0	0.13
H	14.5	0.20
I	2.03	0.13
J	2.20	0.2

PCB Layout



Packaging and Marking



Electrical Response

