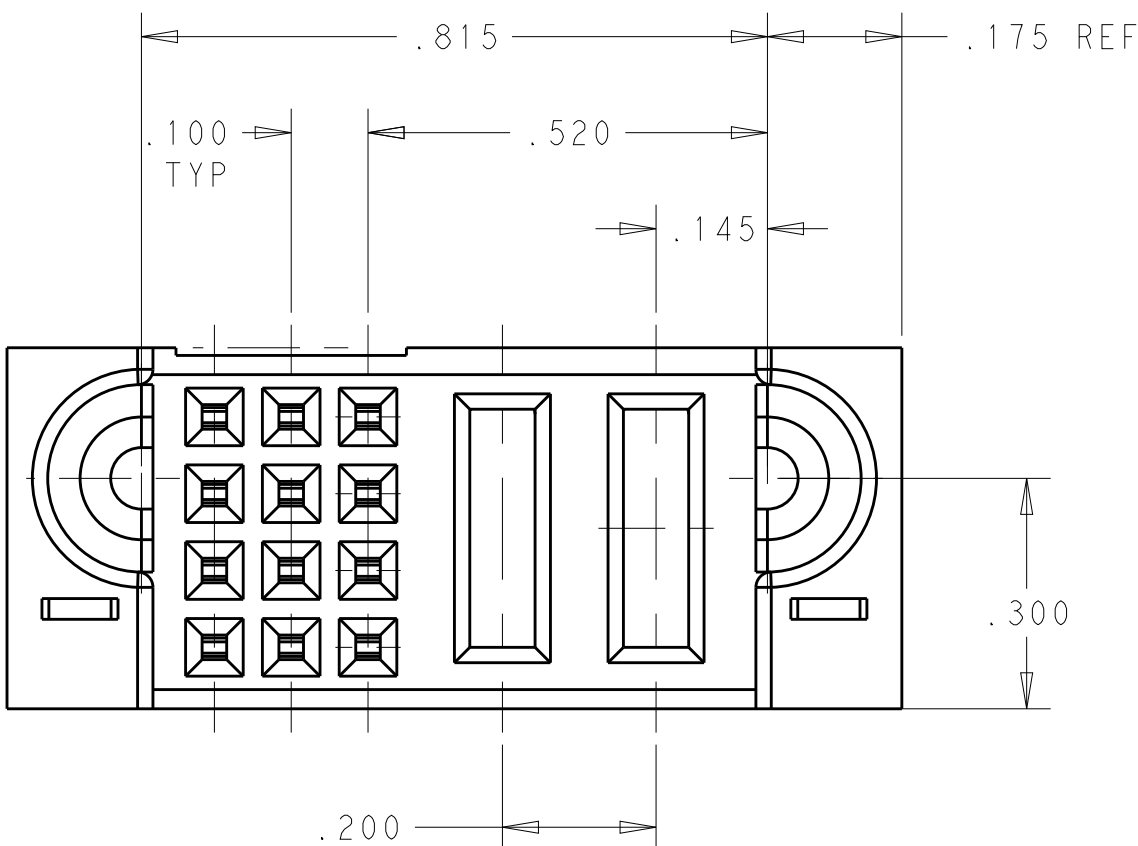
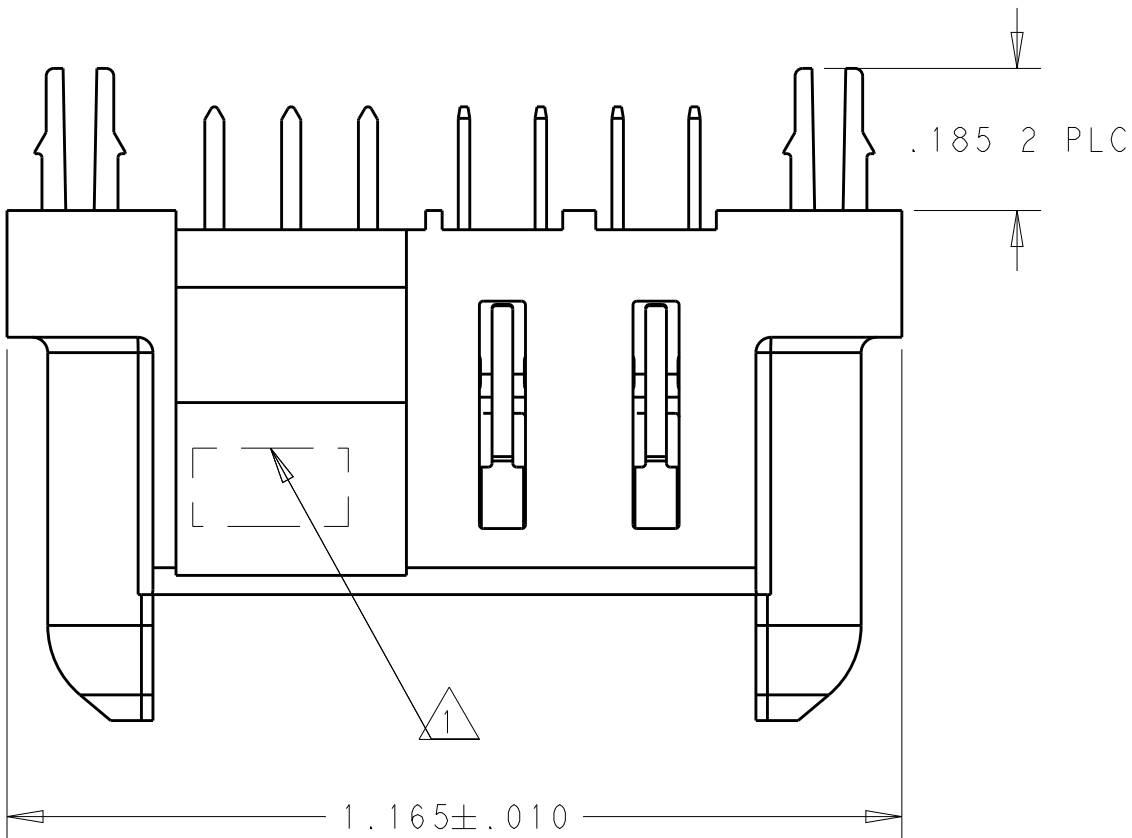
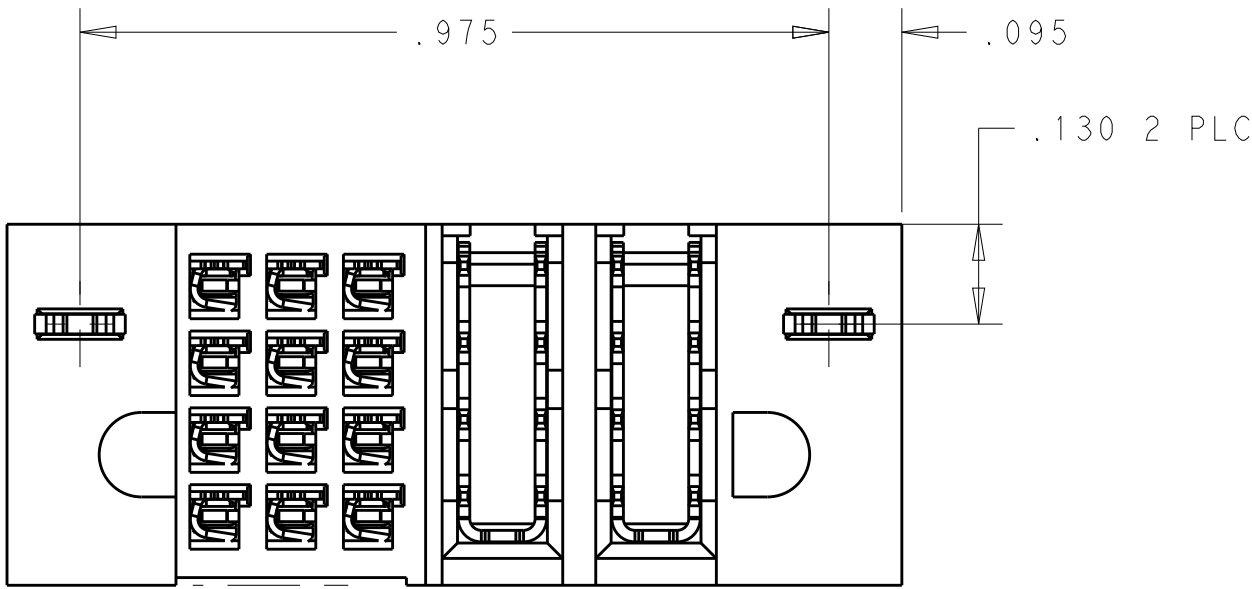
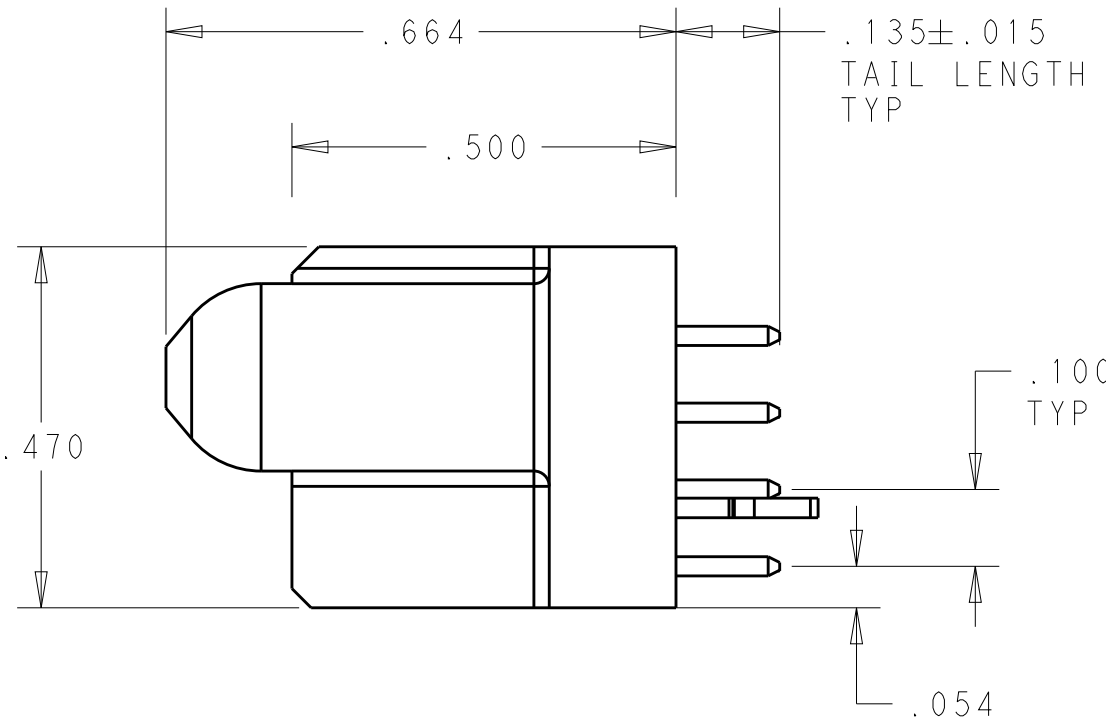


REVISIONS					
P	LTR	DESCRIPTION	DATE	DWN	APVD
1		PROPOSED DESIGN	28NOV2017	CZ	SZ
2		REVISED TAIL LENGTH	02JAN2018	CZ	SZ
3		REVISED	18JAN2018	CZ	SZ
A		RELEASED	27AUG2018	CZ	SZ



- 1 "TE", PART NUMBER, AND DATECODE TO BE MARKED IN AREA SHOWN. PARTS UNDER 2.00 LONG MAY BE MARKED ON BOTH SIDES.
- 2 MATERIAL:  
HOUSING - GLASS FILLED HIGH TEMP THERMO PLASTIC,BLACK, UL94 V-0  
SIGNAL CONTACT - COPPER ALLOY  
POWER CONTACT - HIGH CONDUCTIVITY COPPER ALLOY
- 3 CONTACT PLATING: NOBLE METAL PLATING ON CONTACT FUNCTIONAL AREA OF POWER AND SIGNAL CONTACTS.
- 4 MECHANICAL CONNECTOR KEEP OUT ZONE.
- 5 DATUM AND BASIC DIMENSIONS ESTABLISHED BY CUSTOMER.
- 6 PCB - HOLE DIAMETERS ARE FINISHED HOLE SIZE.
- 7 PCB - .0453±.0010 DRILLED HOLES PLATED WITH .0003 MIN Sn OVER .001 TO .003 Cu PLATING TO ACHIEVE A .040 ±.003 HOLE.



POWER AND SIGNAL PINS

2HDP+12S		2-6450852-7	
DESCRIPTION		PART NUMBER	
THIS DRAWING IS A CONTROLLED DOCUMENT.		DWN C.ZHOU 28NOV2017	
DIMENSIONS:		CHK C.ZHOU 28NOV2017	
INCHES		APVD S.ZHAO 28NOV2017	
TOLERANCES UNLESS OTHERWISE SPECIFIED:		PRODUCT SPEC	
0 PLC ±"		108-2292	
1 PLC ±"		APPLICATION SPEC	
2 PLC ±"		114-13251	
3 PLC ±.005		WEIGHT	
4 PLC ±.0020		CUSTOMER DRAWING	
ANGLES ±2°		SCALE 4:1	
FINISH		SHEET 1 OF 2	
MATERIAL		REV A	

