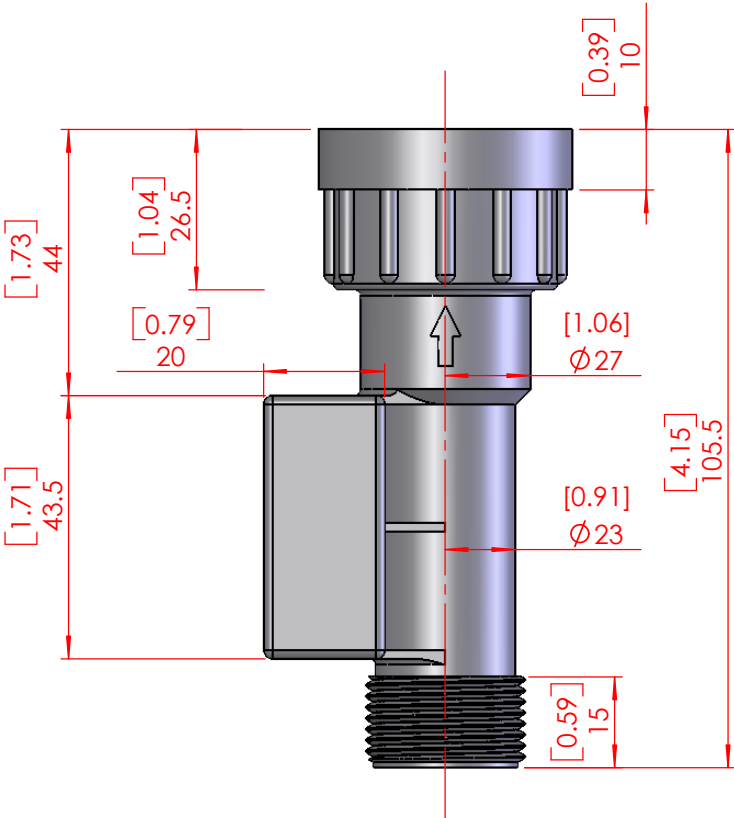
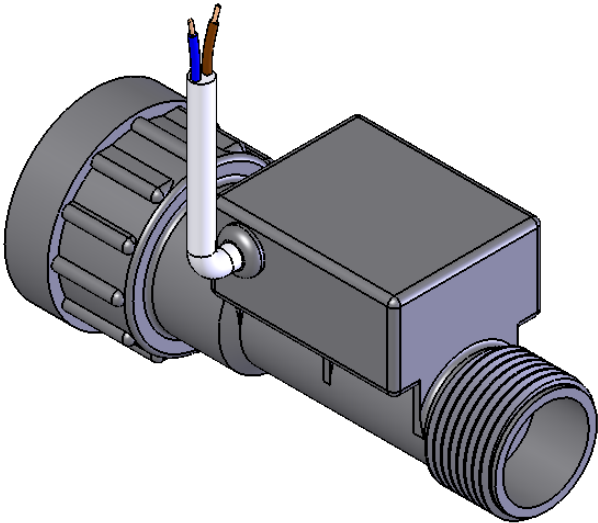
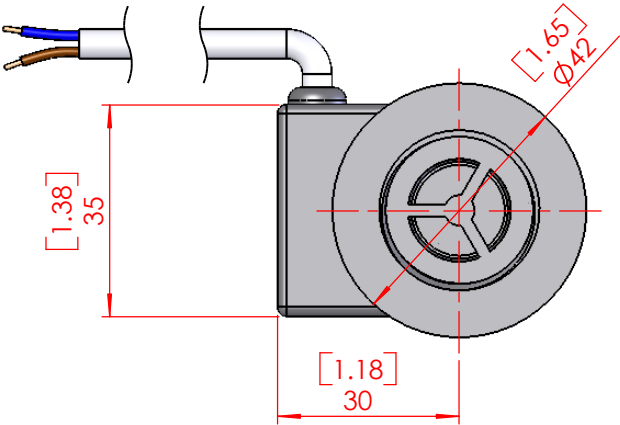


| PARTS LIST |             |             |           |
|------------|-------------|-------------|-----------|
| ITEM NO.   | ARTICLE NO. | DESCRIPTION | QTY. REQD |



| Sensor Specifications       |                                     |
|-----------------------------|-------------------------------------|
| Mounting                    | Flow Switch Vertical                |
| Fitting                     | Flow Switch 3/4" BSP                |
| Max Switching Volts         | 250 VRMS                            |
| Max Switching Current       | 3.0A                                |
| Contact Material            | Triac                               |
| Sensor Material             | Noryl                               |
| Medium/Liquid               | Water                               |
| Operating Temperature Range | 85degC                              |
| Operating Pressure          | 10 BAR                              |
| Cable Type                  | 0.5mm^2 BS6500 PVC double insulated |
| Cable Length                | 1.0M                                |
| Cable Colours               | White outer Blue/Brown inner        |
| Mounting Shock              | 50g for 11ms duration               |
| Mounting Vibration          | 35g up to 500Hz                     |
| Approvals                   | Meets UL 94-HB flammability rating  |
| Mounting                    | Flow Switch Vertical                |

|  |   |   |        |   |   |  |   |          |           |             |           |  |
|--|---|---|--------|---|---|--|---|----------|-----------|-------------|-----------|--|
| REVISION   | A | B | C      | D | UNLESS OTHERWISE SPECIFIED<br>DIMENSIONS ARE IN MILLIMETRES<br>TOLERANCES ARE<br>DECIMALS      ANGLES | CAD<br>GENERATED DRAWING<br>DO NOT<br>MANUALLY DUPLICATE | GENTECH INTERNATIONAL LIMITED<br>GIRVAN, AYRSHIRE, U.K. |          |           |             |           |  |
| CHANGE ORDER   | - |   |        |   |   |  |   |          |           |             |           |  |
| DATE   | - |   |        |   |   |  |   |          |           |             |           |  |
| APPROVED   | - |   |        |   |   |  |   |          |           |             |           |  |
| MATERIAL   |   |   | FINISH |   | DRAWN   | NRW 28.06.05   | PART NAME   |          | FS-01     |             |           |  |
| THIS DRAWING IS THE PROPERTY OF GENTECH International Limited<br>AND SHOULD NOT BE COPIED OR USED FOR MANUFACTURE OR OTHERWISE<br>DISCLOSED WITHOUT THE PRIOR WRITTEN CONSENT OF THE COMPANY © |   |   |        |   | CHECKED   |  | IH  | 28.06.05 |           | ARTICLE NO. | 84019-000 |  |
|  |   |   |        |   | APPROVED  |  | IH  | 28.06.05 |           |             |           |  |
|  |   |   |        |   | DO NOT SCALE DRAWING  |  |   |          | SCALE 4:5 |             |           |  |