

EMP Protector 3400.41.0267

Description

Quarter-wave stub technology

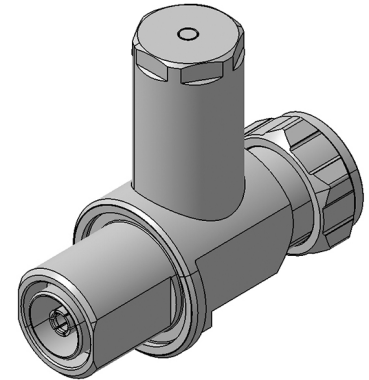
Benefits

Broad-band design

The protector can also be installed reversely

Multi-band operation

Compliant to IEC 61643-21



Product Configuration

| | |
|------------------------|---|
| Main path connectors | Port 1: <u>unprotected</u> , 7/16 plug (male) - Port 2: <u>protected</u> , 7/16 jack (female) |
| Mounting and grounding | MH110 (bulkhead mounting), M8 (screw), brk (bracket) |
| Side of bulkhead | protected side |

Technical Data

Electrical Data

| | |
|-----------------|---------------------------|
| Impedance | 50 Ω |
| Frequency range | 690 - 2690 MHz |
| Return loss | ≥ 26 dB |
| Insertion loss | 0.1 dB typ. ≤ 0.1 dB |
| RF CW power | ≤ 1500 W |
| PIM 3rd order | -160 dBc max. |

| | |
|-----------------------------------|--|
| Surge current handling capability | 100 single / 80 kA multiple kA (test pulse 8/20 μ s) |
| Residual pulse energy | 11 μ J typically (test pulse 4 kV 1.2/50 μ s / 2 kA 8/20 μ s) main path - protected side |

Mechanical Data

| | |
|-------------------|-------|
| Number of matings | 500 |
| Weight | 476 g |

Environmental Data

| | |
|--|--|
| Operating temperature | -40 °C to +85 °C |
| Waterproof degree | IP67 (according to IEC 60529, data refer to the coupled state) |
| 2011/65/EU (RoHS - including 2015/863 and 2017/2102) | compliant acc. Annex III |

Material Data

| Piece Parts | Material | Surface Plating |
|-----------------------|----------|-----------------------|
| Housing | Brass | SUCOPLATE (R) Plating |
| Port 1 center contact | Brass | Silver Plating |
| Port 2 center contact | Bronze | Silver Plating |

Related Documents

| | |
|----------------------|----------------|
| Outline drawing | DOU-00205247 |
| Mounting instruction | DOC-0000176104 |