

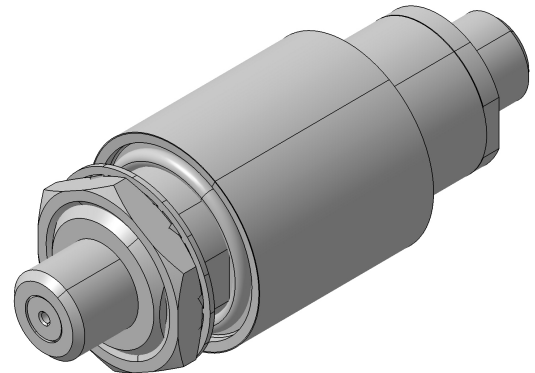
EMP Protector 3406.99.0016

Description

Slim Line GDT technology

Benefits

Broad-band design
DC continuity for remote powering
The protector can also be installed reversely
Fix installed GDT, static sparkover-voltage nom. 90 V
Compliant to IEC 61643-21



Product Configuration

Main path connectors	Port 1: <u>unprotected</u> , F jack (female) - Port 2: <u>protected</u> , F jack (female)
Mounting and grounding	MH71 (bulkhead mounting), brk (bracket)
Side of bulkhead	protected side

Technical Data

Electrical Data

Impedance	75 Ω	
Frequency range	0 - 3000 MHz	0 - 2000 MHz
Return loss	≥ 20 dB	≥ 20 dB
Insertion loss	≤ 0.4 dB	≤ 0.2 dB
RF CW power	≤ 12 W	≤ 12 W
PIM 3rd order	not specified	
DC current	≤ 3 A	
Surge current handling capability	10 single / 5 multiple kA (test pulse 8/20 μ s)	
Residual pulse energy	350 μ J typically (test pulse 4 kV 1.2/50 μ s / 2 kA 8/20 μ s)	main path - protected side

Mechanical Data

Number of matings	30
Weight	85 g

Environmental Data

Operating temperature	-40 °C to +85 °C
Waterproof degree	IP67 (according to IEC 60529, data refer to the coupled state)
2011/65/EU (RoHS - including 2015/863 and 2017/2102)	compliant

Material Data

Piece Parts	Material	Surface Plating
Housing	Brass	SUCOPLATE (R) Plating
Port 1 center contact	Bronze	Silver Plating
Port 2 center contact	Bronze	Silver Plating

Related Documents

Outline drawing	DOU-00300035
Mounting instruction	DOC-0000176104

Remarks

- Grounding lug 9075.99.0026 for cable size AWG 6 / 16mm² included
- Waterproof IP67 in the coupled state with suitable waterproof connectors