

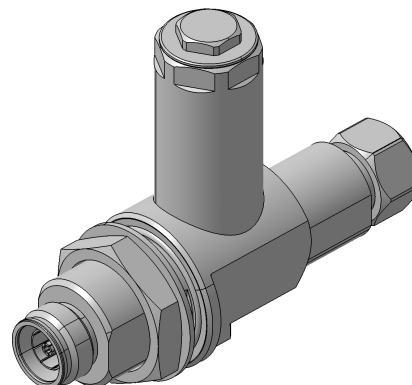
## EMP Protector 3409.31.0001

### Description

High-power/low-IM GDT hybrid technology

#### Benefits

Multi-band operation  
DC continuity for remote powering  
The protector can also be installed reversely  
AISG compliant for 2.176 MHz carrier  
Replaceable GDT 9071.99.0548, (90 V) included  
Mounting screw set 9075.99.0023 included  
Compliant to IEC 61643-21



### Product Configuration

Main path connectors	Port 1: <u>unprotected</u> , 4.3-10 plug (male) - Port 2: <u>protected</u> , 4.3-10 jack (female)
Mounting and grounding	MH110 (bulkhead mounting), M8 (screw), brk (bracket)
Side of bulkhead	protected side

### Technical Data

#### Electrical Data

Impedance	50 $\Omega$	
Frequency range	10 MHz	690 - 2700 MHz
Return loss	18 dB typ.	$\geq 24$ dB
Insertion loss	0.1 dB typ.	$\leq 0.1$ dB
RF CW power		$\leq 1500$ W
PIM 3rd order		-160 dBc max.
DC supply voltage	$\leq 48$ V	
DC current	$\leq 13$ A	
Surge current handling capability	30 single / 20 multiple kA (test pulse 8/20 $\mu$ s)	
Residual pulse energy	350 $\mu$ J typically (test pulse 4 kV 1.2/50 $\mu$ s / 2 kA 8/20 $\mu$ s)	main path - protected side

#### Environmental Data

Operating temperature	-40 °C to +85 °C
Waterproof degree	IP67 (according to IEC 60529, data refer to the coupled state)
2011/65/EU (RoHS - including 2015/863 and 2017/2102)	compliant

#### Material Data

Piece Parts	Material	Surface Plating
Housing	Brass	SUCOPLATE (R) Plating
Port 1 center contact	Brass	Silver Plating
Port 2 center contact	Bronze	Silver Plating

### Related Documents

Outline drawing	DOU-00257737
Mounting instruction	DOC-0000176104