



All Products ▾

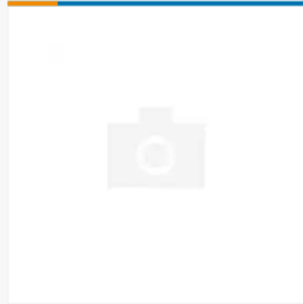
Search by part # or keyword

[Login/Register](#)
[My Account](#) ▾[Products](#) ▾ [Industries & Solutions](#) ▾ [Services & Trainings](#) ▾ [Tools & Resources](#) ▾ [About TE](#) ▾ [Shop TE Store](#)

The product information below may not be complete. If you need documentation, similar, compatible or replacement products, please contact us.

80516-000 ✓ ACTIVE

LS801-31 LIQUID LEVEL SENSOR

TE Internal #: **80516-000**TE Internal Description: **LS801-31 LIQUID LEV
EL SENSOR**[Add to List](#) ▾ | [Similar Products](#) |[Digital Datasheet](#)[Compatible Parts & Tooling](#)[Documents](#)[Features](#)[Product Compliance](#)

No documentation available.

SHOP OUR DISTRIBUTORS - No distributors are currently reporting inventory for this product. For additional information, please contact us.**We are here to help!**

Get in touch with our product experts.

[CHAT WITH US](#)[EMAIL US](#)[CALL US](#)

Compatible Parts

There are no compatible parts for this product.
Please reach out to Product Support to help with your request.[Contact Product Support](#)

Products with Similar Specs

[View All Similar Products](#)

THIS PRODUCT

80516-000

LS801-31 LIQUID LEVEL SENSOR



Non-Stocked

Customers Also Bought

TE Part #: **10V51**Single Phase Filters, 10 A,
Flanged, .250" FASTON...**\$55.550 per unit**

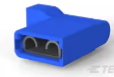
Inventory: In-Stock

[Add To Cart](#)TE Part #: **3-350820-2**Quick Disconnects,
Receptacle, 16 - 14 AWG...**\$0.467 per unit**

Inventory: In-Stock

[Add To Cart](#)TE Part #: **180916**Crimp Terminal Housings,
Tab, Tab Housing, 1...**\$0.401 per unit**

Inventory: In-Stock

[Add To Cart](#)TE Part #: **3-520132-2**Quick Disconnects,
Receptacle, 16 - 14 AWG...**\$0.508 per unit**

Inventory: In-Stock

[Add To Cart](#)

Contact Our Team - 24/7 Support

[+1 800 522 6752](#)[Live Chat](#)[See Support Details](#)

Connect With Us



Access Partner Information

[Distributors](#)[Suppliers](#)[TE Notice on COVID](#)

Get Answers Now

[Authorized Distributors & Resellers](#)[Product FAQs](#)[Samples FAQs](#)[TE Store FAQs](#)[Terms and Conditions of Sale](#)[Samples Terms and Conditions](#)

Select Country

[Language](#)[English \(EN\)](#)**Ship to**[United States \(\\$USD\)](#)