



Search by part # or keyword

Products

Industries &  
Solutions

Resources

TE Store

Sign In



Connectors > PCB Connectors > PCB Connector Accessories > PCB Connector Keying

530721-1

MINI BOX EXTERNAL KEY PASSIV



AMP

TE Internal #: **530721-1**

TE Internal Description: **MINI BOX EXTERNAL KEY PASSIV**

Mil-Spec: **M55302/31-06**

Accessory Type : **Keying Hardware**

Keying Hardware Type : **External Key**

[Similar Products](#) | [Digital Datasheet](#)

Compatible Parts & Tooling

Free Standard Shipping on US Orders. Exclusions apply. See complete details at [TE Store FAQs](#)

QTY:

Extended Price:

We are here to help!

Get in touch with our product experts.



CHAT WITH US



EMAIL US



CALL US

Documents

Features

Product Compliance

Product Drawings

MINI BOX EXTERNAL KEY PASSIV

[MINI BOX EXTERNAL KEY PASSIV](#) English

[EXTERNAL KEY, MINI-BOX, STANDARD](#) tif English

CAD Files

Customer View Model

[ENG\\_CVM\\_530721-1\\_D.3d\\_igs.zip](#) English

Customer View Model

[ENG\\_CVM\\_530721-1\\_D.3d\\_stp.zip](#) English

[ENG\\_CVM\\_530721-1\\_D.2d\\_dxf.zip](#) English

[ENG\\_CVM\\_530721-1\\_D.pdf](#) English

Instruction Sheets

AMP 501 SERIES MINI-BOX CONNECTORS

[S\\_408-7825\\_O.tif](#) English

Instruction Sheet (U.S.)

[ENG\\_SS\\_408-7825\\_O.pdf](#) English

Please review product documents or [contact us](#) for the latest agency approval information. Please Note: Use the Product Drawing for all design activity.

Product Type  
Features

Accessory Type : **Keying Hardware**

Feedback



Body Features	Keying Hardware Type : <b>External Key</b> Key Material : <b>Stainless Steel</b> Key Material Finish : <b>Passivated</b>
Operation/Application	For Use With : <b>2-Row Pin Headers, 2-Row Right Angle Pin Headers, 2-Row Straddle Mount Pin Headers, 4-Row Right Angle Pin Headers</b>
Packaging Features	Packaging Quantity : <b>100</b> Packaging Method : <b>Bag</b>
EU RoHS Directive 2011/65/EU	<i>This declaration covers EU Directive 2011/65/EU incl. Delegated Directive 2015/863/EU. The restrictions under 2015/863/EU apply as of 22 July 2021 for EEE categories 8 (medical devices) and 9 (monitoring and control equipment).</i>
EU ELV Directive 2000/53/EC	
China RoHS 2 Directive MIIT Order No 32, 2016	
EU REACH Regulation (EC) No. 1907/2006	Current ECHA Candidate List: <b>JAN 2019 (197)</b> Candidate List Declared Against: <b>JAN 2019 (197)</b>
Halogen Content	
Solder Process Capability	Not applicable for solder process capability
Statement of Compliance	<a href="#">Statement of Compliance pdf</a>
Compliance Documents	There may be Environmental Compliance related documents on the <a href="#">DOCUMENTATION Tab</a>
Disclaimer	This information is provided based on reasonable inquiry of our suppliers and represents our current actual knowledge based on the information they provided. This information is subject to change. The part numbers that TE has identified as EU RoHS compliant have a maximum concentration of 0.1% by weight in homogenous materials for lead, hexavalent chromium, mercury, PBB, PBDE, DBP, BBP, DEHP, DIBP, and 0.01% for cadmium, or qualify for an

exemption to these limits as defined in the Annexes of Directive 2011/65/EU (RoHS2). Finished electrical and electronic equipment products will be CE marked as required by Directive 2011/65/EU. Components may not be CE marked. Additionally, the part numbers that TE has identified as EU ELV compliant have a maximum concentration of 0.1% by weight in homogenous materials for lead, hexavalent chromium, and mercury, and 0.01% for cadmium, or qualify for an exemption to these limits as defined in the Annexes of Directive 2000/53/EC (ELV). Regarding the REACH Regulations, TE's information on SVHC in articles for this part number is still based on the European Chemical Agency (ECHA) 'Guidance on requirements for substances in articles'(Version: 2, April 2011), applying the 0.1% weight on weight concentration threshold at the finished product level. TE is aware of the European Court of Justice ruling of September 10th, 2015 also known as O5A (Once An Article Always An Article) stating that, in case of 'complex object', the threshold for a SVHC must be applied to both the product as a whole and simultaneously to each of the articles forming part of its composition. TE has evaluated this ruling based on the new ECHA "Guidance on requirements for substances in articles" (June 2017, version 4.0) and will be updating its statements accordingly.

## Products with Similar Specs

[View All Similar Products](#)

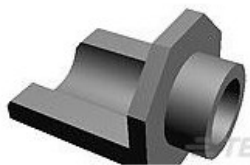
### THIS PRODUCT

### TOP RESULTS ?

PCB CONNECTOR KEYING

**530721-1**

MINI BOX EXTERNAL KEY PASSIV



From

**In-Stock**

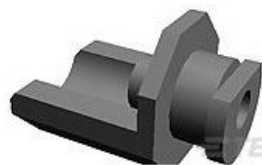
Accessory Type : **Keying Hardware**

Keying Hardware Type : **External Key**

PCB CONNECTOR KEYING

**530721-4**

MINI-BOX EXT KEY KIT



From

**In-Stock**

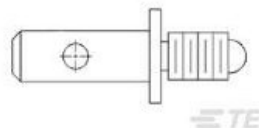
Accessory Type : **Keying Hardware**

Keying Hardware Type : **External Key**

PCB CONNECTOR MOUNTING

**443001-1**

JACKSCREW, MINI-BX, SPECIAL



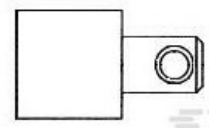
**Non-Stocked**

Accessory Type : **Jackscrow**

PCB CONNECTOR MOUNTING

**531959-4**

JS, MINI-BOX W/LUBE



**Non-Stocked**

Accessory Type : **Jackscrow**

[ABOUT TE CONNECTIVITY](#)

[FOR PARTNERS](#)

[SUPPORT](#)

[CALL US](#)

[LIVE CHAT](#)

[UNITED STATES \(EN\)](#)