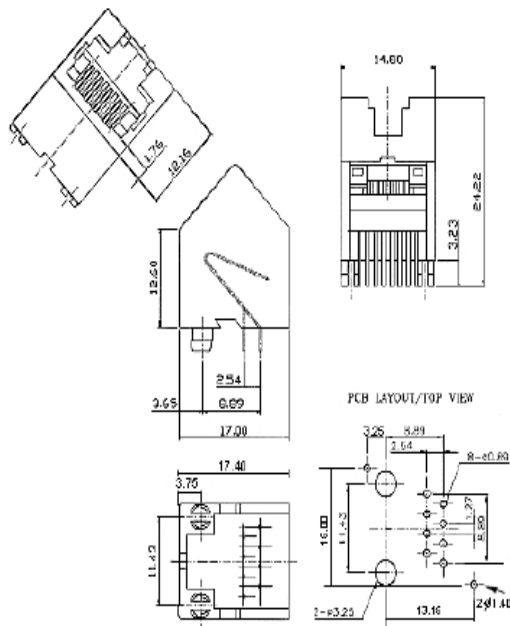
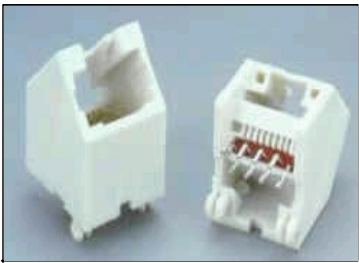


45 Angle Entry PC Jacks

Specifically manufactured to allow for greater design flexibility this jack is suited for a wide variety of data communications applications including modems, computer peripherals, 10 Base T hubs and many others. Available in shielded and non-shielded versions.



UNSHIELDED



Materials

Shielded: 0.25mm Thickness Copper Alloy Plated with Tin (90 u")
Housing: Standard Material Glass Filled Polyester UL 94V-0
 Standard Color White
Contact: 0.35mm (0.014") Thickness Alloy C5210. Gold Plating Over Nickel Over Tin.
Gold Plating: 0.76 um/ 30 u inch

Ordering Information

Positions/Contacts	RoHS	Description	Part Number
8P8C	✓	45 Angle PC Mount Jack, Non-Shielded	303458
8P8C	✓	45 Angle PC Mount Jack, Shielded	303458S

✓ RoHS compliant wave solder only