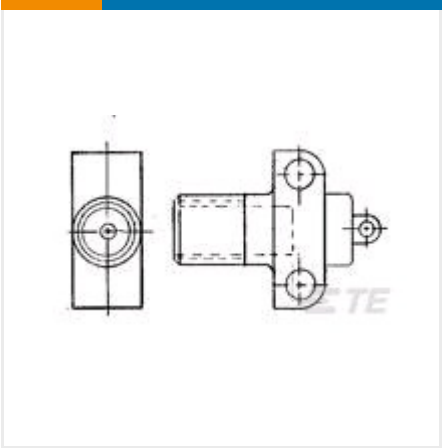




+ CONNECTORS

CIRCULAR POWER CONNECTORS



✓ Active

TE CONNECTIVITY (TE)
LGH 1/2 RECEPTACLE

LGH | LGH , LKH

866803-1
TE Internal Number: 866803-1

EU RoHS Compliant with Exemptions
EU ELV Compliant with Exemptions

Product Type Lead Assembly
Operating Voltage (VDC) 10000
Housing Type Receptacle
Operating Temperature Range (°C) -55 – 125

↓ **PRODUCT DRAWING**
English

DOCUMENTATION

Product Drawings

Lgh-1/2 Recpt With Mounting Holes

PDF (TIFF AVAILABLE)

English

Product Specifications

Product Specification

Standard LGH Connectors, Series 1/2I, 1/2LI, 1I, 1LI, 2I, 3I And 4I

PDF

English

FEATURES



Please review product documents or [contact us](#) for the latest agency approval information.

Please Note: Use the Product Drawing for all design activity.

Product Type Features

Product Type Lead Assembly

Housing Type Receptacle

Electrical Characteristics

Operating Voltage (VDC) 10000

Mechanical Attachment

Panel Mount Retention Type Flange with Mounting Holes

Panel Feedthrough Yes

Usage Conditions

Operating Temperature Range (°C) -55 – 125

Packaging Features

Packaging Quantity 1

PRODUCT COMPLIANCE



Statement of Compliance

Statement of Compliance

PDF