

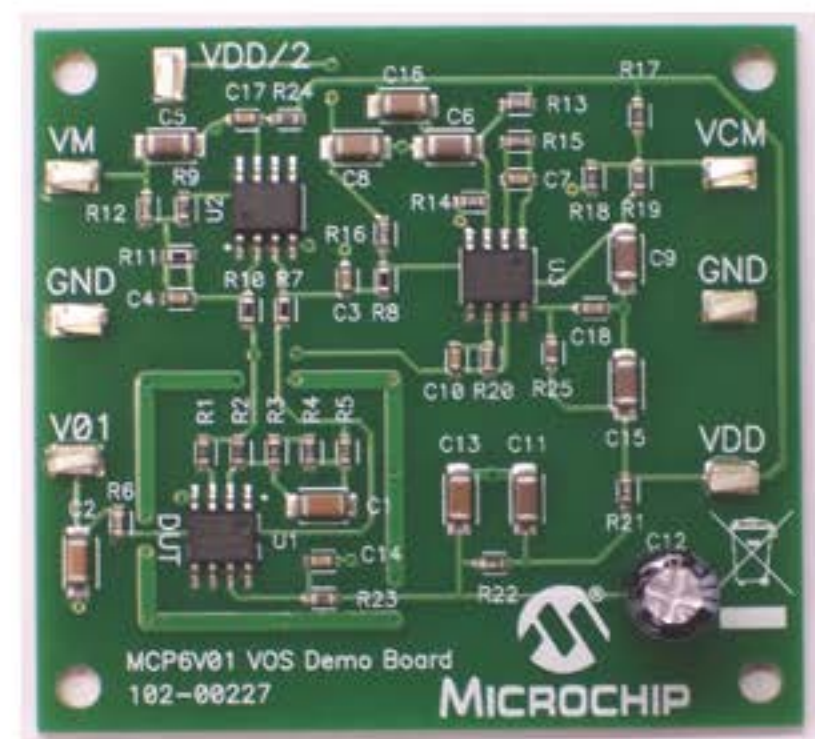
MCP6V01 Input Offset Demo Board

Buy Now

Part Number: MCP6V01DM-VOS

Documentation & Software

The MCP6V01 Input Offset Demo Board is intended to provide a simple means to measure the MCP6V01/2/3 op amps input offset voltage (VOS) under a variety of bias conditions. This VOS includes the specified input offset voltage value found in the data sheet plus changes due to power supply voltage (PSRR), common mode voltage (CMRR), output voltage (AOL) and temperature (IVOS/ITA).






Features

Package Contents

- Test Points for connecting lab equipment
- Analog circuit that produces an accurate representation of the DUT's input offset voltage (VOS)
- DUT's common mode voltage defaults to mid-supply (VDD/2)

Documentation & Software

Back To Top

Documents	Last Updated	Size	
MCP6V06/7/8 Data Sheet	4/25/2014 4:20:56 PM	1001KB	
MCP6V01/2/3 Data Sheet	4/25/2014 4:20:54 PM	999KB	
MCP6V01 Input Offset Demo Board User's Guide	6/16/2009 3:54:58 PM	465KB	
MCP6V01 Input Offset Demo Board Gerbers	6/16/2009 3:45:28 PM	130KB	