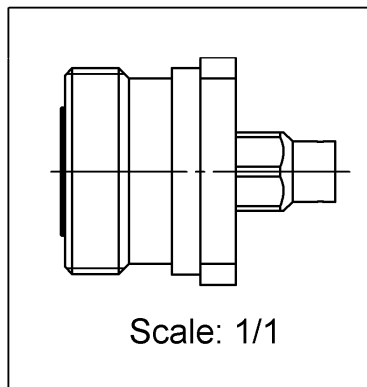
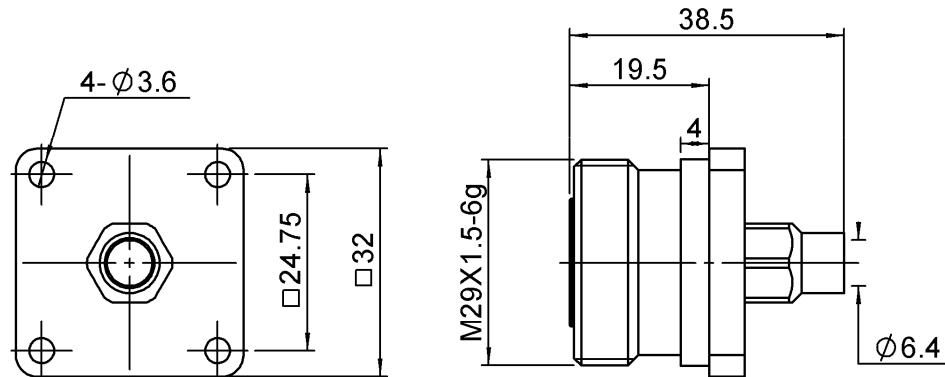


## STRAIGHT SQUARE FLANGE JACK SOLDER TYPE

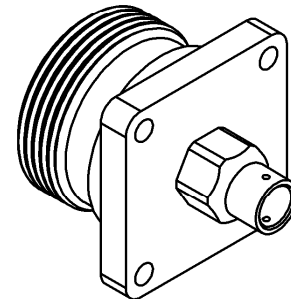
**R185A.254.000**

CABLE .250

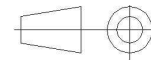
Series : ECO 7/16



PANEL CUT OUT		
A DIA		
B DIA		
4 holes		
	mm	
	Maxi	mini
A	29.2	29.1
B	3.7	3.6
C	24.8	24.7



All dimensions are in mm.



COMPONENTS	MATERIALS	PLATING (µm)
BODY	BRASS	BBR
CENTER CONTACT	BRONZE	SILVER
OUTER CONTACT		
INSULATOR	PTFE	
GASKET	SILICONE RUBBER	
OTHERS PARTS		
-	-	-
-	-	-

Issue : 0947 A

In the effort to improve our products, we reserve the right to make changes judged to be necessary.

**RADIAL**

**STRAIGHT SQUARE FLANGE JACK SOLDER TYPE****R185A.254.000****CABLE .250**

Series : ECO 7/16

**PACKAGING**

Standard	Unit	Other
<b>20</b>	<b>'W' option</b>	<b>Contact us</b>

**SPECIFICATION****ELECTRICAL CHARACTERISTICS**

Impedance	<b>50</b>	$\Omega$
Frequency	<b>0-3</b>	GHz
VSWR	<b>1.1 + 0.0</b>	x F(GHz) Maxi
Insertion loss	<b>0.05</b>	$\sqrt{F}(\text{GHz})$ dB Maxi
RF leakage	<b>- (NA)</b>	- F(GHz)) dB Maxi
Voltage rating	<b>1400</b>	Veff Maxi
Dielectric withstanding voltage	<b>2700</b>	Veff mini
Insulation resistance	<b>10000</b>	M $\Omega$ mini

**CABLE ASSEMBLY**

Stripping	a	b	c	d	e	f
mm	7.50	0.00	0.00	0.00	0.00	0.00

Assembly instruction :

Recommended cable(s)  
KS 3  
RG 401

Characteristics indicated on this data sheet are those that can be achieved with the highest performance cable. Intrinsic limitations of the cable may diminish the performance of the assembly

Cable retention

- pull off	<b>500</b>	N mini
- torque	<b>NA</b>	N.cm

**MECHANICAL CHARACTERISTICS**

Center contact retention		
Axial force – Mating end	<b>200</b>	N mini
Axial force – Opposite end	<b>100</b>	N mini
Torque	<b>2</b>	N.cm mini

**TOOLING**

Part Number	Description	Hexagon
.	.	.

Recommended torque		
Mating	<b>NA</b>	N.cm
Panel nut	<b>NA</b>	N.cm
Clamp nut	<b>1200</b>	N.cm
A/F clamp nut	<b>11.0</b>	mm

Mating life	<b>100</b>	Cycles mini
Weight	<b>102.3</b>	g

**ENVIRONMENTAL**

Operating temperature	<b>-40/+85</b>	$^{\circ}\text{C}$
Hermetic seal	<b>NA</b>	Atm.cm3/s
Panel leakage	<b>NA</b>	

**OTHER CHARACTERISTICS**

Issue : 0947 A

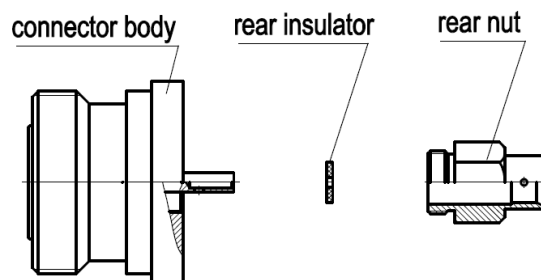
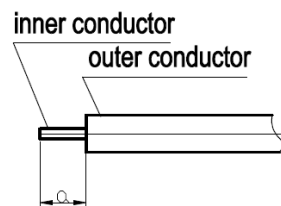
In the effort to improve our products, we reserve the right to make changes judged to be necessary.



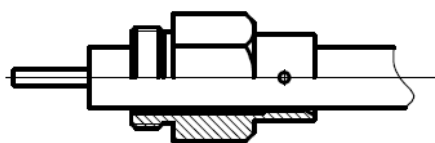
## STRAIGHT SQUARE FLANGE JACK SOLDER TYPE

**R185A.254.000****CABLE .250**

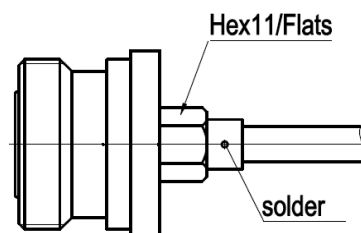
Series : ECO 7/16

**COMPONENTS****STRIPPING DIMENSIONS****1**

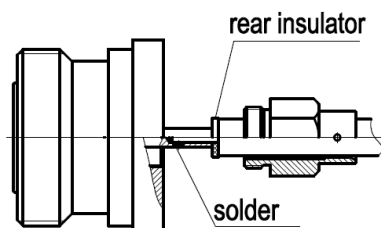
- Strip the cable according to dimension. Be careful not to nick inner conductor, and slide the rear nut onto the cable.

**3**

- Screw rear nut into the connector body tightly. (Recommended coupling torque 1200~1800N.cm.) Then solder rear nut together with the cable outer conductor.

**2**

- Slide the rear insulator onto the cable inner conductor. push the cable inner conductor into the center conductor of the connector, when the cable inner conductor slides all the way into the hole of connector center conductor, it should no longer be exposed, solder center conductor together with the cable inner conductor.

**Issue : 0947 A**

In the effort to improve our products, we reserve the right to make changes judged to be necessary.

**RADIAL**