

ATTENUATORS

TNC, up to 4 GHz, 150 Watts

SPECIFICATIONS:

Models: XT150W-XX, XT150W-XXF, XT150W-XXM

RoHS
Compliant

AEROFLEX
A passion for performance.

Electrical:

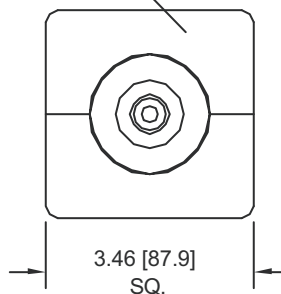
Frequency Range _____ DC - 4.0 GHz
Standard Freq. Values _____ 2.5 & 4 GHz
Standard dB Values _____ 3, 6, 10, 20, 30 & 40 dB
Attenuation Accuracy DC - 1.5 GHz 1.5 - 2.5 GHz 2.5 - 4 GHz
3 & 6 dB _____ ±0.50 dB _____ ±1.0 dB _____ ±1.5 dB
10 & 20 dB _____ ±0.50 dB _____ ±0.75 dB _____ ±1.0 dB
30 & 40 dB _____ ±0.75 dB _____ ±1.0 dB _____ ±1.5 dB
Input VSWR (Max) _____ 1.15:1 _____ 1.25:1 _____ 1.35:1
Input Power _____ 150 Watts Avg. @ +25°C
Derated Linearly to 30 Watts @ +125°C
Peak Power _____ 2 kW Max.
(5uSec Pulse, .05% Duty Cycle)
Impedance _____ 50 Ohms
Operating Temp Range _____ -54°C to +125°C

Mechanical:

TNC Connectors ** _____ Passivated Stainless Steel
Mates with MIL-STD-348
Conductors _____ Gold Plated Beryllium Copper
Housing _____ Anodized Aluminum

** TNC Connectors are 18 GHz Mode Free.

Custom Mtg. hole Config.
may be Added to this
Surface



END VIEW
TYPICAL

Units must be Mounted in such a way as to
Allow for Free Air Flow Around fins to Assure
Performance

Note: Units are Unidirectional, Therefore Input Connector MUST be specified & will be Indicated on Unit

Model Number: **XT150W-XX**

Male/Female Connectors

Length: 6.53 ±.05 [165.9 ±1.3]

Pictured

Model Number: **XT150W-XXF**

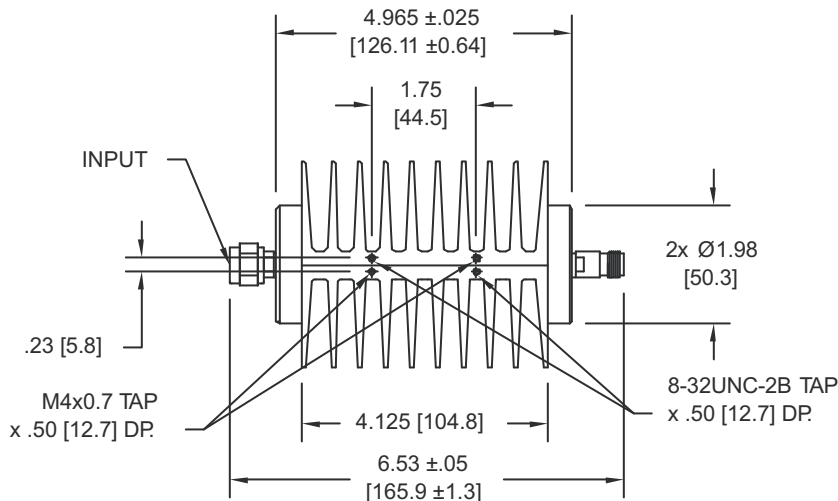
Female/Female Connectors

Length: 6.62 ±.05 [168.1 ±1.3]

Model Number: **XT150W-XXM**

Male/Male Connectors

Length: 6.43 ±.05 [163.3 ±1.3]



HOW TO ORDER:

Model Number: **XT150W-XXY**

Freq. Range
2 = DC - 2.5 GHz
4 = DC - 4 GHz

Connector Configuration
= Male/Female
F = Fem/Fem
M = Male/Male

dB Value

Ordering Examples:

Model Number: **4T150W-10**

DC - 4 GHz, 10 dB; TNC - Male/Fem

Model Number: **2T150W-3F**

DC - 2.5 GHz, 3 dB; TNC - Fem/Fem

Note: Dimensions in Brackets are Expressed in Millimeters and are for Reference Only.
Design, specifications are subject to change without notice. Contact factory for technical
specifications before purchasing and/or use.

XT150W-ATT: REV G

AEROFLEX
INMET

Aeroflex / Inmet, Inc. • 300 Dino Drive, Ann Arbor, MI 48103 • U.S.A.
888-244-6638 or 734-426-5553 • FAX: 734-426-5557
www.aeroflex.com/inmet • inmet@aeroflex.com